

## **Washington County Catastrophic Fire Planning**

### **Actions to mitigate Risk, Associated Costs, and Priority**

The three top priorities for Washington County are as follows

- 1- 18 Corridor, this area has a large majority of the following values at risk. Full-time residents with-in a WUI area (Human Life and Health). Built Infrastructure: Homes, Businesses, Major Natural Gas line, compressor station, High Voltage power lines, water both culinary and irrigation, Communication sites. Natural Infrastructure: Municipal Water shed, and Fish and wildlife habitat. Economical Drivers: Agricultural Production areas, Developed recreational areas. The maps created by the county GIS, has taxable values for each parasol of private land. There has been some fuels mitigation work done in this area on a small scale.
- 2- New Harmony, this area has a large majority of the following values at risk. Full-time residents with-in a WUI area (Human Life and Health). Built Infrastructure: Homes, Businesses, I-15, water both culinary and irrigation, Communication sites. Natural Infrastructure: Municipal Water shed, and Fish and wildlife habitat. Economical Drivers: Agricultural Production areas, Developed recreational areas. The maps created by the county GIS, has taxable values for each parasol of private land. There has been some fuels mitigation work done in this area on a small scale.
- 3- Kolob, this area has a large majority of the following values at risk. Seasonal residents with-in a WUI area and multiple scout and church camps (Human Life and Health). Built Infrastructure: Homes, Businesses, water both culinary and irrigation. Natural Infrastructure: Municipal Water shed, and Fish and wildlife habitat. Economical Drivers: Timber Production areas and Developed recreational areas. The maps created by the county GIS, has taxable values for each parasol of private land. There has been some fuels mitigation work done in this area on a small scale.

#### **Associated costs:**

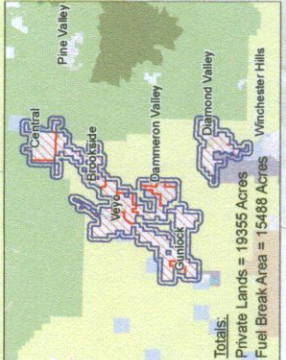
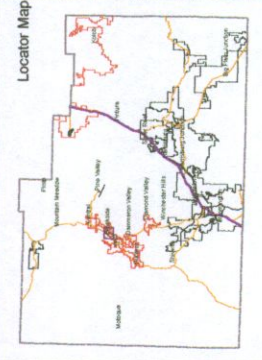
Mitigation costs vary from \$1,000 an acre, up to \$6,000 an acre depending on the fuel type and the type of treatment involved. When working in the WUI area's or any area with infastructure there's usually a higher cost for treatment, because of the time involved with multiple land owners and planning . A lot of time goes into planning and making contact with the different land and property owners when it comes to this kind of work. There isn't a one size fits all type of approach that can be taken to change the landscape of one property. Actions can only be taken once the planning and property owner has signed off on the specifics of what work needs and can be done on a case by case situation. A lot of work could be done through community wildfire protection resources like fire trained fuels crews and engine crews, if funded and managed correctly. It's hard to gage what the potential return may be due to the unknown of when and where a wildfire will happen. The probability of success is high if projects are funded and managed correctly and we have a high amount of community support in Washington County for this kind of work to take place.



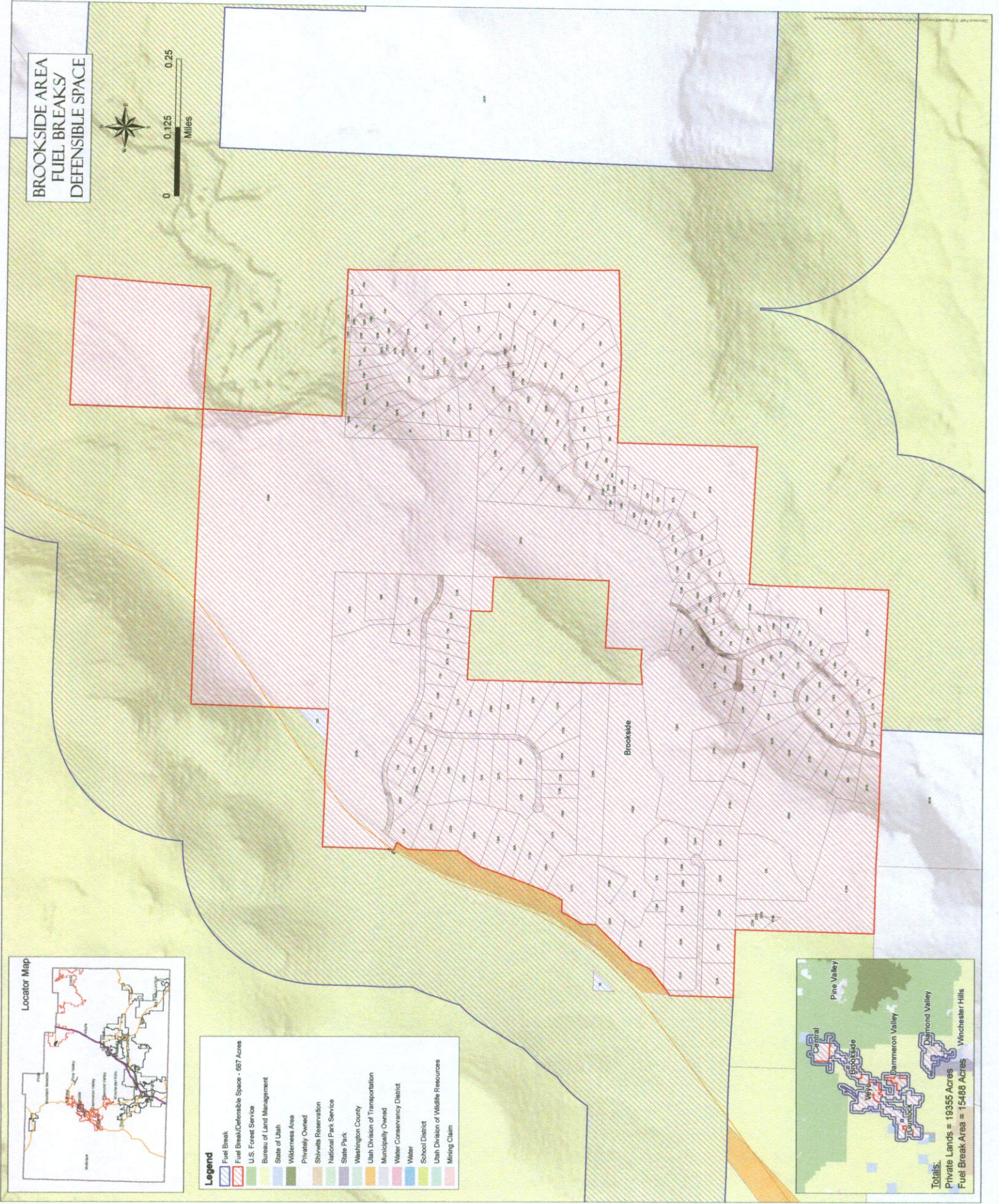
**BROOKSIDE AREA  
FUEL BREAKS/  
DEFENSIBLE SPACE**



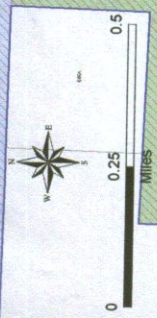
- Legend**
- Fuel Break
  - Fuel Break/Defensible Space - 687 Acres
  - U.S. Forest Service
  - Bureau of Land Management
  - State of Utah
  - Wilderness Area
  - Privately Owned
  - Shivwits Reservation
  - National Park Service
  - State Park
  - Washington County
  - Utah Division of Transportation
  - Municipally Owned
  - Water Conservancy District
  - Water
  - School District
  - Utah Division of Wildlife Resources
  - Mining Claim



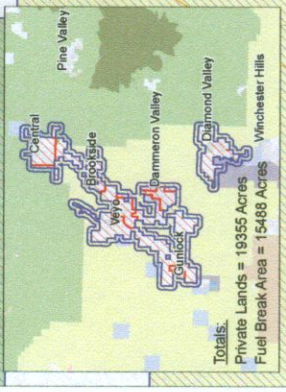
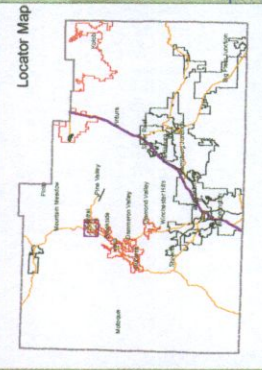
**Totals:**  
Private Lands = 19355 Acres  
Fuel Break Area = 15488 Acres



**CENTRAL AREA  
FUEL BREAKS/  
DEFENSIBLE SPACE**



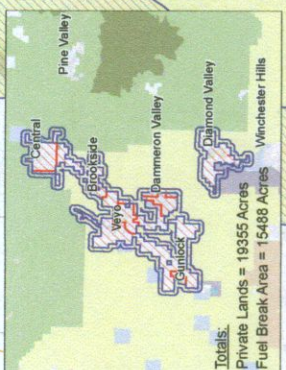
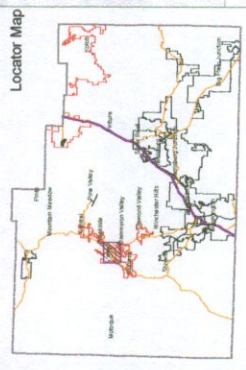
- Legend**
- Fuel Break
  - Fuel Break/Defensible Space - 1732 Acres
  - U.S. Forest Service
  - Bureau of Land Management
  - State of Utah
  - Wilderness Area
  - Privately Owned
  - Shivwits Reservation
  - National Park Service
  - State Park
  - Washington County
  - Utah Division of Transportation
  - Municipally Owned
  - Water Conservancy District
  - Water
  - School District
  - Utah Division of Wildlife Resources
  - Mining Claim



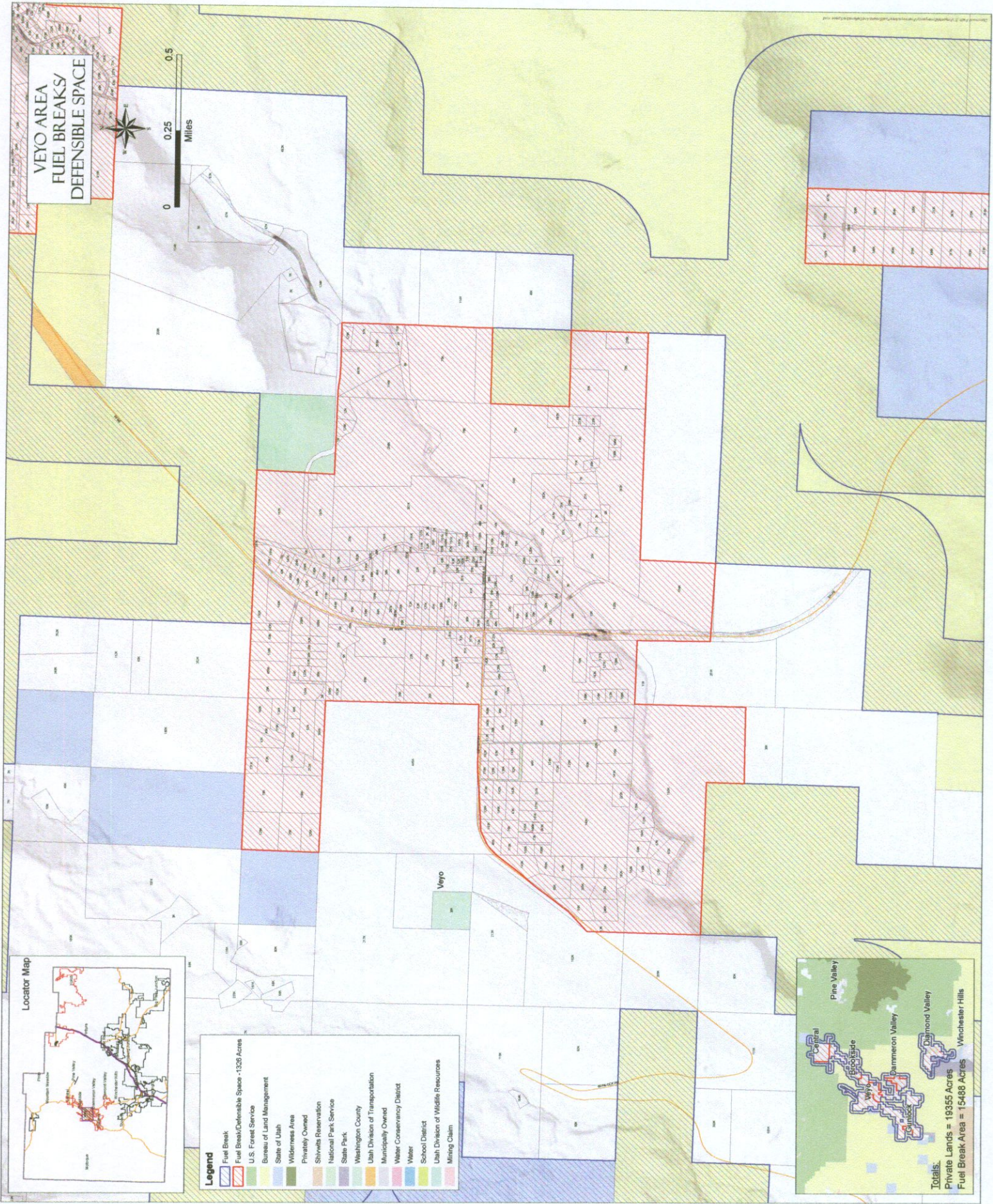
# VEYO AREA FUEL BREAKS/ DEFENSIBLE SPACE



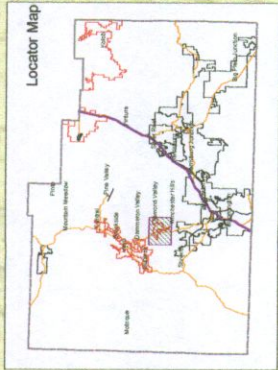
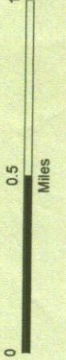
- Legend**
- Fuel Break
  - Fuel Break/Defensible Space - 13,295 Acres
  - U.S. Forest Service
  - Bureau of Land Management
  - State of Utah
  - Wilderness Area
  - Privately Owned
  - Shivwits Reservation
  - National Park Service
  - State Park
  - Washington County
  - Utah Division of Transportation
  - Municipally Owned
  - Water Conservancy District
  - Water
  - School District
  - Utah Division of Wildlife Resources
  - Mining Claim



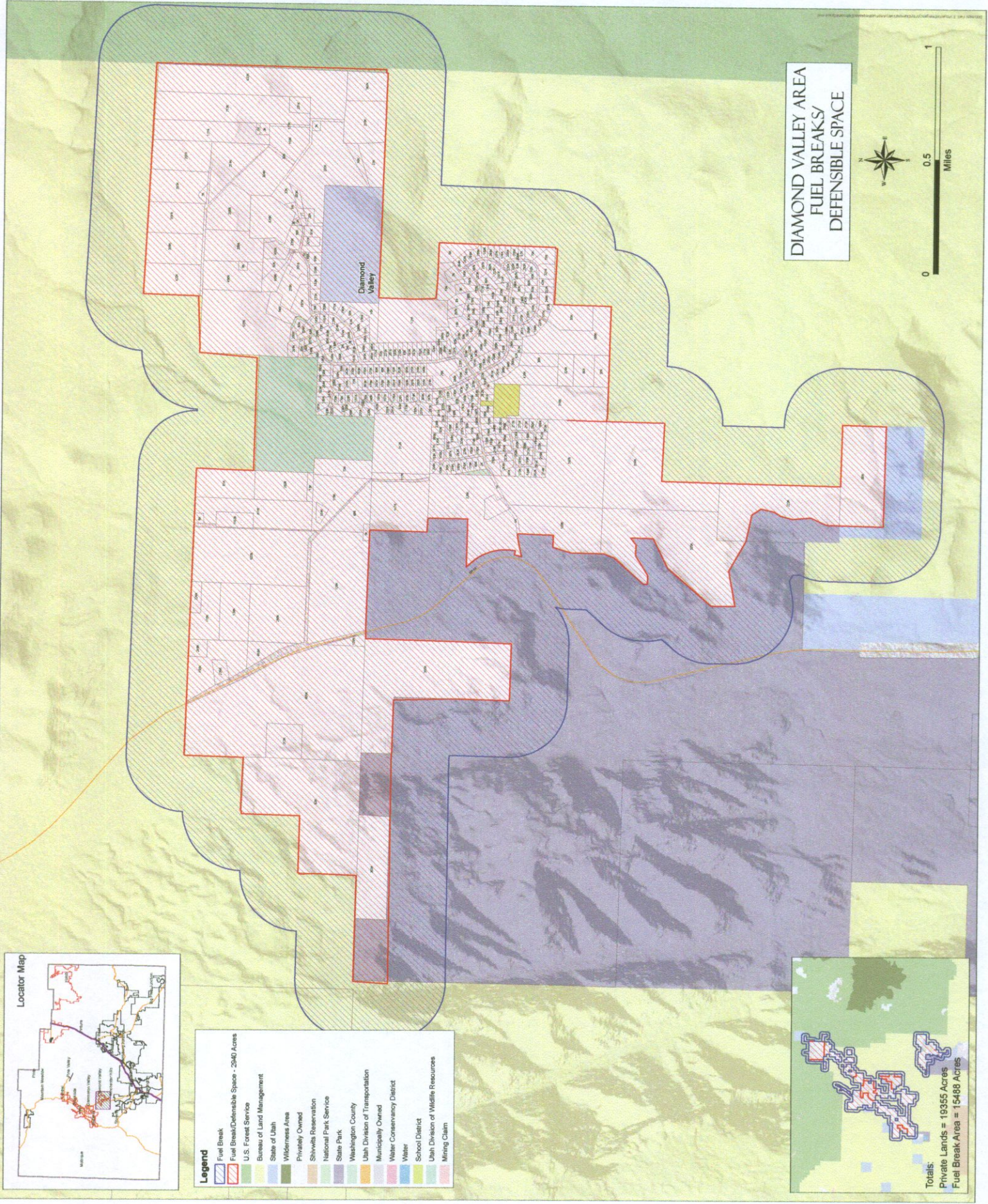
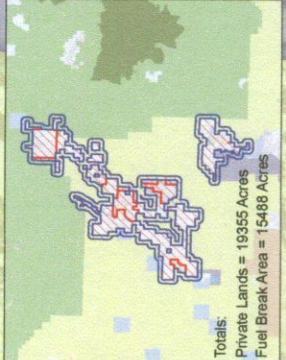
**Totals:**  
 Private Lands = 19,355 Acres  
 Fuel Break Area = 15,488 Acres



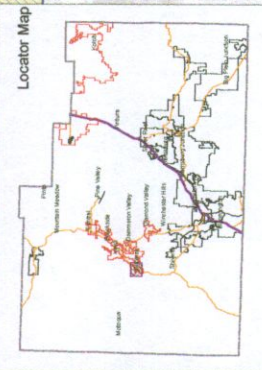
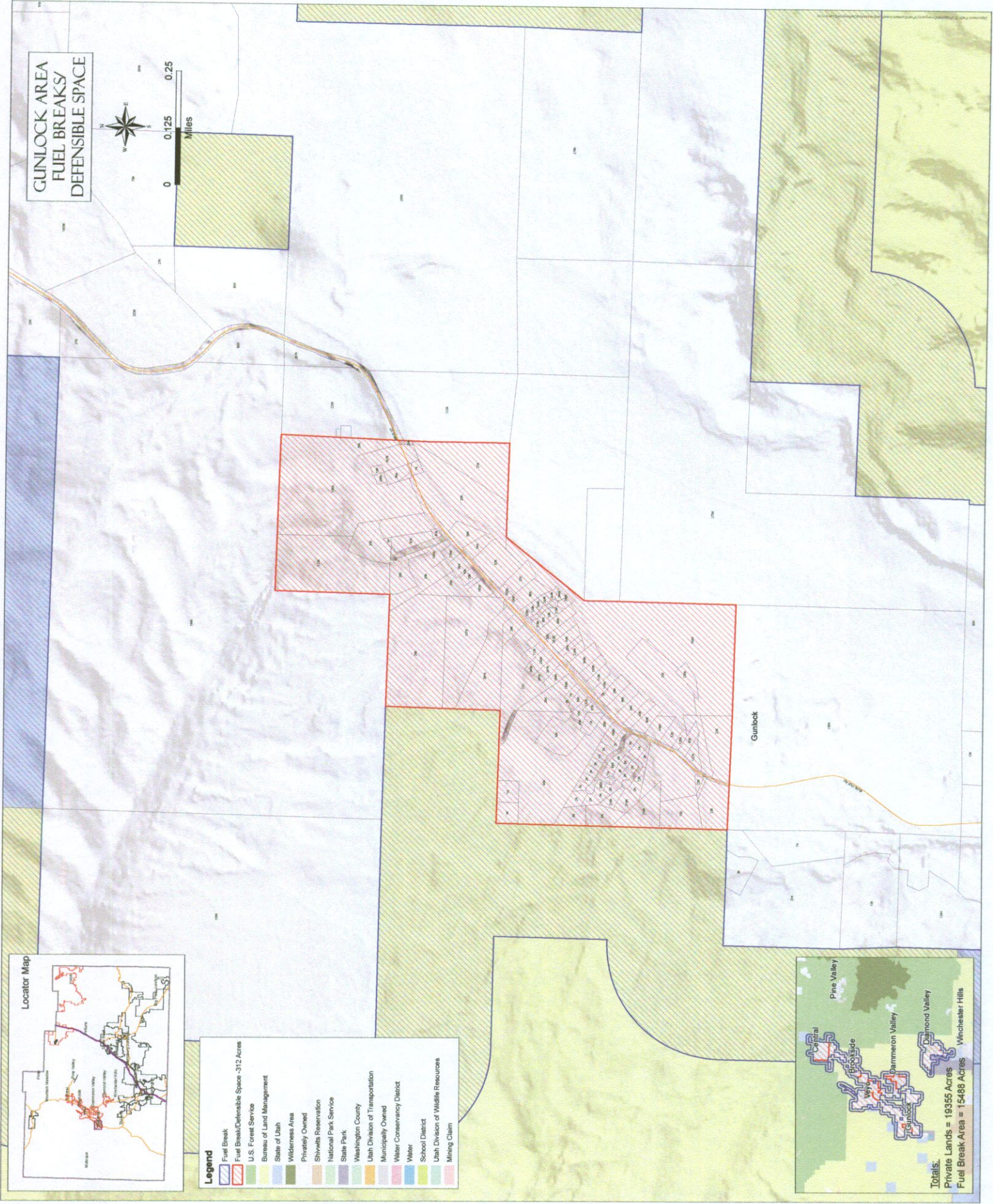
# DIAMOND VALLEY AREA FUEL BREAKS/ DEFENSIBLE SPACE



- Legend**
- Fuel Break
  - Fuel Break/Defensible Space - 2040 Acres
  - U.S. Forest Service
  - Bureau of Land Management
  - State of Utah
  - Wilderness Area
  - Privately Owned
  - Shivwits Reservation
  - National Park Service
  - State Park
  - Washington County
  - Utah Division of Transportation
  - Municipally Owned
  - Water Conservancy District
  - Water
  - School District
  - Utah Division of Wildlife Resources
  - Mining Claim



**GINLOCK AREA  
FUEL BREAKS/  
DEFENSIBLE SPACE**



- Legend**
- Fuel Break
  - Fuel Break/Defensible Space -312 Acres
  - U.S. Forest Service
  - Bureau of Land Management
  - State of Utah
  - Wilderness Area
  - Privately Owned
  - Shivwits Reservation
  - National Park Service
  - State Park
  - Washington County
  - Utah Division of Transportation
  - Municipally Owned
  - Water Conservancy District
  - Water
  - School District
  - Utah Division of Wildlife Resources
  - Mining Claim

