

GARFIELD COUNTY PROPOSAL

1. Community Mammoth Creek
2. Identify the High Value Resources & Assets (HVRA)
 - HL=2500 population
 - BI=360 homes
 - MW=90% are on wells 10% have their water
 - CP=Area Managed for Timber or Forage Production Estimated 16,000 Acres
 - FW=Mammoth is a Blue Ribbon fishery, deer and elk habitat
 - AP= Two major cattle ranches
 - DR=Developed Recreation Areas There is a camp ground in the upper Mammoth USFS
 - OT=Other Economic Drivers: Hunting and Fishing
3. Actions to Mitigate Threat:
 - Timber Harvest estimated acres are 16,000
 - RX Fire estimated acres are 14,000
 - Grazing Program estimated acres are 20,000
 - Mechanical treatments like bull hogging etc. estimated acres are 11,000

Who is responsible: state, county, private landowners and the USFS

Treatment Priorities

- Upper Mammoth creek it is a Cut, Pile, Burn treatment and under burn
- Lower Mammoth it is a Cut, Pile Burn & Mechanical treatment
- Middle Mammoth Timber Harvest in combination with Grazing and Thinning in the Ponderosa Pine

4. Community Protection:

All Public Safety Agencies in the Community and the county would focus on the priorities are to educate the Mammoth Creek Community on the wildland urban interface problem they have and what the community needs to do to address the problem on private land

- Update CWPP

- Adopt Ready-Set-Go program
- Develop and exercise an evacuation plan
- Outreach and education regarding the benefits to fuels mitigation
- Treat private lands as necessary to abate the hazard (cost addressed earlier)

Estimate cost \$100,000

Fire Management Capacity and Capability: evaluate the local fire protection and what actions should be taken to reduce wildfire risk;

- Volunteer recruitment and retention
- Training
- Equipment
- Facilities

County Official, Fire District and citizens within Mammoth Creek are responsible for this area.

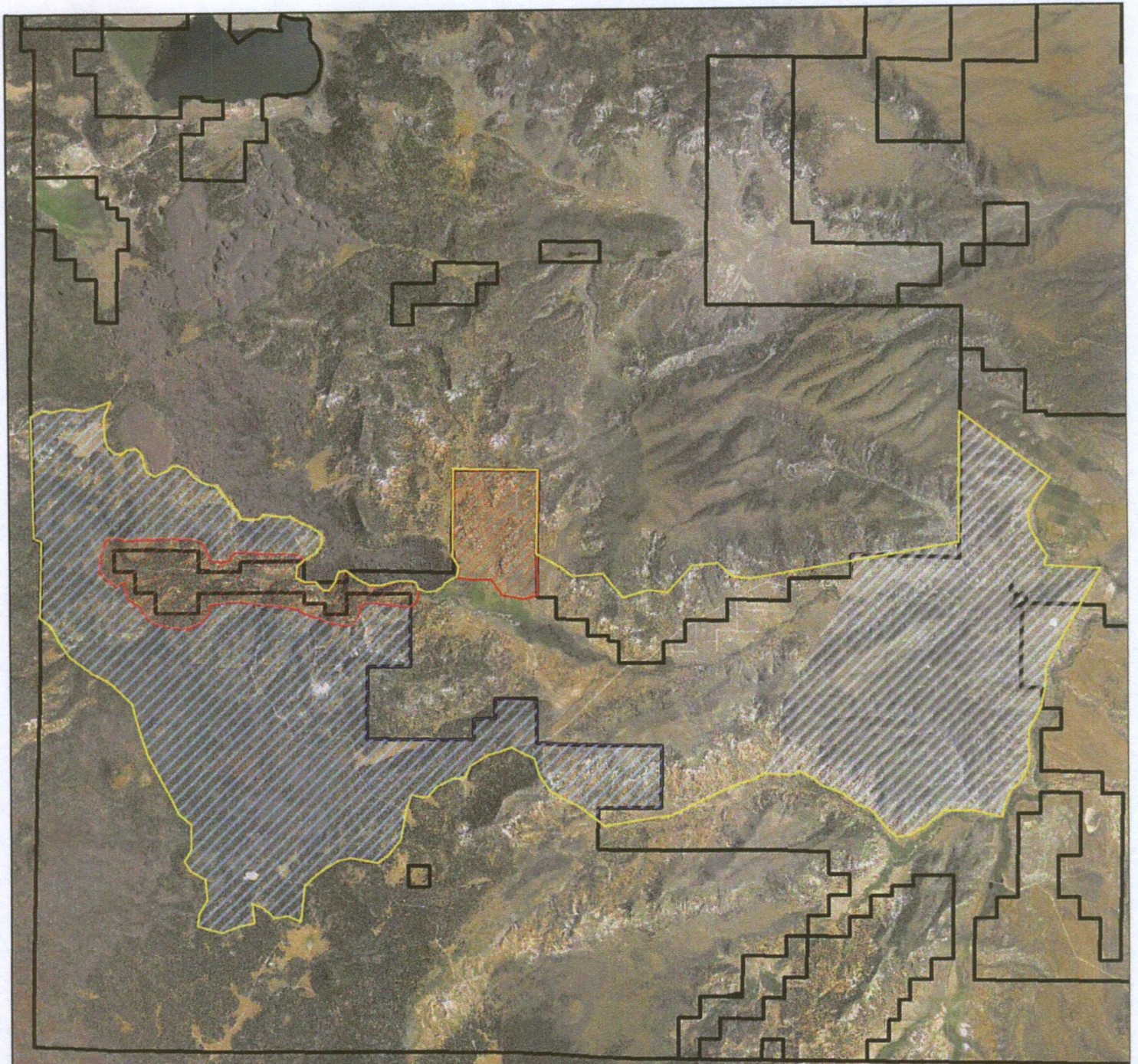
Priorities

- Volunteer Recruitment and Training
- Newer and better suppression equipment suited to the community. Such as a 4X4 Type 2 Engine and Water Tender, newer Brush Truck






Estimate Cost \$750,000

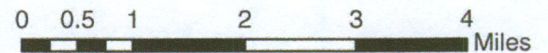
TOTAL ESTIMATED COST: \$29,760,000

Garfield County Catastrophic Wildfire Map



Legend

-  Project Area 25,446 Acres
-  Under Burn 10,204 Acres
-  Cut, Pile, Burn & Mechanical 6,401 Acres
-  TSI 1,411 Acres
-  Cut, Pile, Burn 2,305 Acres



Community	HVR's at Risk				Likelihood of Threat					Risk Rating	Actions to Mitigate Threat	Return on Investment			Probability of Success	
	Type	Amount	Importance	Value Rating	Occurrence (BP)	Intensity (CFL)	Hazard Rating	Actions by Goal	Cost			Who	Priority	Investment	Community Support	Effectiveness
Mammoth Creek	Human Life and Health	2500	High-60													
	Built Infrastructure	360	High=60					community protection	100,000	outreach and education regarding the benefits to fuels mitigation	county					
	Municipal Watersheds	90%	High-60					fire management	\$ 750,000	volunteer Recruitment and training	county					
	Areas of Timber and Forage production	16 K	High = 60													
	Important fish and Wildlife areas	fishery	High = 60													
	Agricultural Production	NA	High = 60													
	Developed Recreation areas	camp ground	Moderate = 40													
	Other economic drivers	Other economic hunting/fishing	High = 60													

Chaining

Total Mitigation Cost

27.95 M

1

2

3

High

High

High

High

High

High

High

High