



UDAF

**UTAH DEPARTMENT OF
AGRICULTURE & FOOD**

2017 ANNUAL SUMMARY REPORT



WWW.AG.UTAH.GOV

Commissioner's Message



LuAnn Adams
Commissioner of Agriculture and Food

Greetings.

I want to take the opportunity to say how proud I am to be writing to you about Utah agriculture. In my travels around the state I continually meet some of the hardest working and innovative business people in the state. Our farmers and ranchers run operations that are big and small and contribute jobs and healthy economies to both rural and urban Utah.

Our Utah Legislature acknowledged the economic potential of local agriculture and created the Local Food Advisory Council this year. The Council is designed to build a local food economy, create jobs, foster the viability of family-owned farms and preserve open space. The Council met late this year, and I plan to report on its progress in the months to come.

Another positive step I've seen this year appears to be the move by the Trump Administration to reduce federal overreach in agriculture with regards to the Waters of the United States (WOTUS). I was able to spend time with EPA Administrator Scott Pruitt in Park City, and he gave me great hope for the future. I would like to see each state develop their own water plan by working with EPA to develop water quality standards and work with the regional offices to mitigate any conflicts between states. This is already happening in our Colorado River Salinity Program.

This summer I was elected President of WASDA (Western Agriculture States Department of Agriculture), an association of my counterparts in the 13 western states plus two territories. Utah will host the group's annual meeting next summer where we will showcase Utah Agriculture's innovation and collaboration. Utah is a leader in High Tech Agriculture as we see robotic dairies, a large greenhouse tomato operation, aquaponics, and many other high tech products that are developed in Utah.

Thank you for your interest in Utah agriculture and I invite you to review our annual report to read more about our agency and our agriculture industry.

Contact us:

Find phone numbers and more information about UDAF divisions and programs at the web address below:

<http://ag.utah.gov/about-udaf/divisions-and-programs.html>

UDAF main phone number: 801-538-7100

UDAF main informational email: agriculture@utah.gov

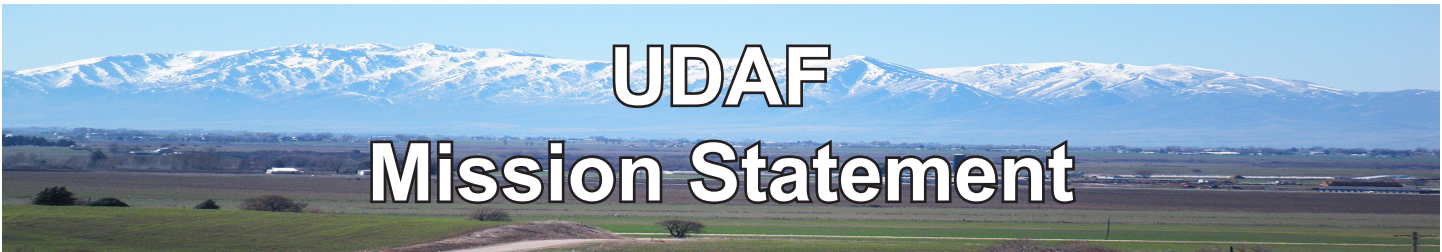
Facebook: www.facebook.com/utahagriculture/
Twitter: [@UTagandfood](http://www.twitter.com)

Sincerely,

A handwritten signature in blue ink that reads "LuAnn Adams".

LuAnn Adams

Utah Commissioner of Agriculture and Food



UDAF Mission Statement



The mission of the Utah Department of Agriculture and Food is to “Promote the healthy growth of Utah agriculture, conserve our natural resources and protect our food supply.”

A safe food supply is the basis for health and prosperity. The Department's **Vision Statement** is: To be the recognized guardian of Utah's food supply and sustainable agriculture.

The Department values:

- Integrity and respect
- Service and hard work
- Stewardship and accountability
- Growth and achievement
- People and partnerships
- Heritage and culture

In carrying out this mission, Department personnel will take specific steps in various areas of the state’s agricultural industry, such as the following:

Regulation

Department operations help protect public health and safety as well as agricultural markets by assuring consumers of clean, safe, wholesome, and properly labeled and measured or weighed products. This includes products inspected by UDAF's animal industry, plant industry, weights and measures, food and dairy inspectors, compliance officers and field representatives. It involves chemical analysis by the state laboratory, which is part of the Department. It also includes other consumer products such as bedding, quilted clothing and upholstered furniture.

Conservation

Through its variety of programs in this area, the Department will work to protect, conserve and enhance Utah’s agriculture and natural resources, including water and land, and to administer two low-interest revolving loan funds aimed at developing resources and financing new enterprises.

Marketing and Development

UDAF's marketing section strengthens Utah's agriculture and allied industries financially by expanding present markets and developing new ones for Utah's agricultural products locally, in the United States, and overseas as well. It also helps develop new products and production methods and promotes in-state processing of Utah agricultural products for a stronger state economy.



UTAH GROWN



Administrative Functions

Commissioner LuAnn Adams, Deputy Commissioner, Scott Ericson, or other staff as appropriate serve on several statewide agriculture committees, councils and commissions, including Utah Agriculture Advisory Board, Utah Conservation Commission, Utah Horse Racing Commission, and state Farmland Evaluation Advisory Committee.

Other administrative functions and programs of the Department include:

- Communications Office
- Agriculture Mediation program
- Agriculture in the Classroom
- Administrative Services Division

Communications:

The communications office is an important link between the public, industry, employees, and other state agencies.

Communication tools employed by the office include:

- Videos
- Brochures
- Articles and Newsletters
- Web pages
- Displays and presentations
- Social media
- News releases and media events

Agriculture Mediation:

UDAF continues to provide services to the agriculture community through its USDA Certified Mediation Program. The program assists farmers and ranchers who face adverse actions in connection with USDA programs. Utah is one of 34 certified programs in the country.

Agriculture in the Classroom:

As people get further removed from the farm and the sources of their food, the AITC program strives to increase agricultural literacy among the state's school students.

Much of the program's resources go into teacher training and providing classroom materials.



Community Outreach



- UDAF Created an Aquaponic Garden--12-2015
- School and community group presentations
- Displays at fairs, meetings and conferences

Social Media

Page likes as of October 2016:



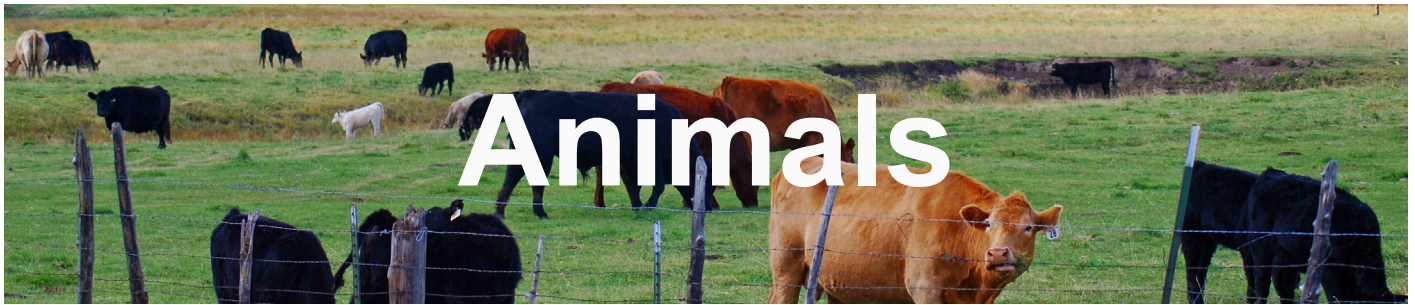
3,607



836



153



Animals

The mission of the Animal Industry Division is prevention and control of animal disease through outbreak prevention, monitoring, education and quarantine as necessary. The division also actively engages in livestock brand identification and theft prevention.

The major programs of the division are:

- Animal health
- Meat and poultry inspection
- Livestock inspection
- Fish health
- Elk farming and elk hunting parks
- Veterinary diagnostic labs

Division Highlights

Animal Health

18,385 bulls were tested for Trichomoniasis in 2015.

2 positive cases.

58 incidents of vesicular stomatitis found in 2015.

No confirmed cases of avian influenza so far in 2016.

Animal inspections

168,358 entry permits issued to non poultry.

809,412 cattle, horse and elk were inspected.

28,493 inspection certificates were issued.

856 missing or stolen animals returned to their owners

Fish Health

The aquaculture program reviewed annual reports and renewed Certificates of Registration (COR) for:

15 aquaculture facilities

82 fee fishing facilities

4 fish processing plants.





Plants and Conservation



The Division of Plant Industry and Conservation ensures consumers disease free and pest free plants, grains, and seeds, as well as properly labeled agricultural commodities, and the safe application of pesticides and farm chemicals.

Plant Regulatory Programs

- Insect control
- Fertilizer and feed
- Seed & grain inspection and testing
- Pesticide applicator licensing and product registration
- Fruit and vegetable inspection and grading
- Plant quarantine & pest survey
- Organic certification and nursery program



Pesticide Enforcement Program

The UDAF pesticide program includes education, licensing and enforcement. Program highlights for 2016-17 include:

- 440** inspections and investigations launched.
- 273** notices of violation sent
- 27** pesticide applicator training sessions



UDAF also certifies and re-certifies licensed applicators. Statewide there are **7,649** commercial, non-commercial and private applicators.

Entomology Program--Invasive Insects

The velvet longhorn beetle has been found in substantial numbers at **19** sites in **4** counties. This insect poses a serious threat to Utah fruit orchards. UDAF is working with researchers to better understand this pest and mitigate damage to commercial fruit producers. In 2017, The UDAF Invasive Insects program received the Governor's Award For Excellence for its eradication or control efforts of several invasive insects including gypsy moth and Japanese Beetle.

Entomology Program--Honey Bee Inspections

During 2016, the state Apiary Program inspected **495** hives. American foulbrood was found in **.4%** of the hives, while chalkbrood was found in **5-10%** of the inspected hives.



Conservation Programs:

The Plant Industry Division also assists farmers and ranchers in caring for and enhancing Utah's natural resources. The major plant-related conservation programs of the division include:

- Noxious and invasive weeds
- Grazing improvement program
- Conservation commission
- Conservation districts
- Agricultural resource development loan program
- Ag. certificate of environmental stewardship (ACES)

Invasive Species Mitigation (ISM) Program

As part of the noxious weed control program, the Utah Legislature has dedicated funds to combat noxious and invasive weeds throughout Utah. Grants are awarded to projects based on species being addressed and expected effectiveness of controlling an invasive species. In 2016-17, 75,000 acres were treated statewide. A total of 80 applications were received. Of those 74 were funded, resulting in 24 invasive species being treated in 16 counties.



Agricultural Resource Development Loans

The UDAF Loan Section manages several loan funds. The largest program in the Loans Section, with 55 percent of its assets and over 500 loans, is the Agricultural Resource Development Loan (ARDL) program. The ARDL program has been in operation since 1976.

ARDL is administered by the section for the Utah Conservation Commission. Examples of eligible projects include animal waste management, water usage management (irrigation systems and wells), rangeland improvement, on farm energy projects, and disaster mitigation and cleanup. ARDL Interest rates are fixed at 3.00%, 2.75% or 2.50% based on the amount of the loan. A term of either 7 or 15 years will be determined by the type of collateral taken to secure the loan. A four percent administration fee is added to the loan amount and covers marketing and project planning costs.



Utah Conservation Commission

The commission consults with stakeholders as it strives to protect the natural resources within the state and administers the conservation district programs. The mission of the Conservation Districts is to enable Utah's private land managers to protect and enhance their soil, water and related natural resources. This is done in cooperation with the UCC and Utah's 38 CD's.



Food and Product Safety



Protecting the safety and integrity of the food supply is one of the Utah Department of Agriculture and Food's (UDAF) core functions. The Regulatory Services Division takes that responsibility very seriously. The division's regulatory functions go beyond food. The main programs of the division are:

- Consumer protection
- Weights and measures
- Dairy and egg farm inspections
- Food establishment inspections
- Food labeling and food safety compliance
- Bedding, quilted clothing and upholstered furniture

Food Establishment Inspections

The UDAF Food Program functions as a regulatory agency and therefore has many tools to protect the consumers and promote agriculture.

- The Program has **4,407** registered food facilities.
- Inspectors completed **6,558** inspections in 2015, which are up from 4,164 inspections in 2014.
- Priority violations resulted in voluntary destructions and hold orders involving **5,242** pounds of food for a total of **\$12,195**.

Produce Safety

In 2016, the Utah Department of Agriculture applied for and was awarded a **\$3.6 Million, 5-year** federal grant as part of a State/Territory Cooperative Agreement to Enhance Produce Safety.

Entering into a cooperative agreement with the FDA enables the state of Utah to work closely with its produce growers directly.

Weights and Measures

Inspected and tested Weighing and Measuring devices that are used commercially include gasoline pumps, propane meters, high volume gasoline meters, rack meters, vehicle tank meters, scales, etc. These inspections are unannounced to help both the business and the consumer receive an accurate measurement. In 2016-17 **28,252** gasoline pumps and **2,767** fuel storage tanks were inspected.



Chemistry Laboratory

The Laboratory Services Division operates as a service for various divisions within the Department of Agriculture and Food. The division laboratories provide chemical, physical, and microbiological analyses of dairy, meat, and other agricultural and food products. All samples analyzed in the laboratories are collected and forwarded by various field inspectors from the divisions of Plant Industry and Conservation, Regulatory Services, and Animal Health. Most of these samples are tested for specific ingredients as stated by the associated label guarantee. Some products are also examined for the presence of undesirable materials and contaminants. Specific labs include:

- Dairy testing laboratory
- Meat Laboratory
- Pesticide residue laboratory
- Feed and fertilizer laboratory
-

Dairy Testing Laboratory

The dairy testing lab is responsible for testing Grade-A milk and dairy products, including pre-pasteurized milk as well as finished dairy products. The laboratory also administers an industry laboratory certification program.

Meat Laboratory

The Meat Laboratory analyzes meat and meat product samples obtained during inspections of plant and processing facilities in Utah. Tests are performed for component levels, and to ensure products are free of food borne pathogens.

Feed and fertilizer Laboratory

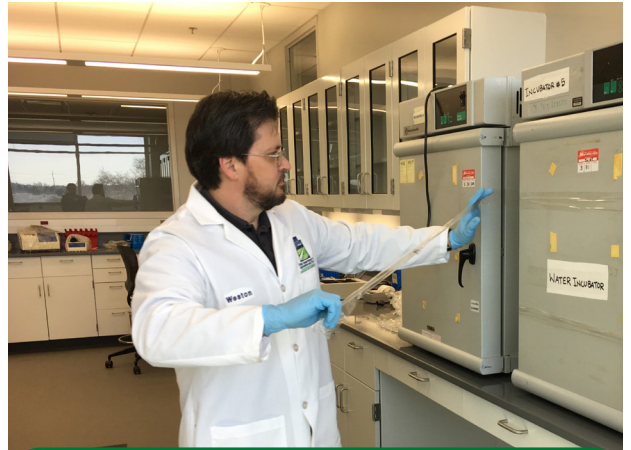
The Feed and Fertilizer Laboratory analyzes feed and fertilizer products to ensure label guarantees; tests are also done to detect the presence of harmful substances, such as drug residues and toxins.

Pesticide Residue Laboratory

Various sample types are analyzed for the presence of pesticide residues to support misuse investigations.

Significant Events

Construction of the new Unified State Lab building in Taylorsville was completed in January this year, and was occupied in early February. The lab also started testing water samples from Utah Lake and other locations for cyanotoxins related to algae blooms.



Dr. Weston Judd shows off new equipment at the new multi-agency chemistry laboratory that opened in January 2017

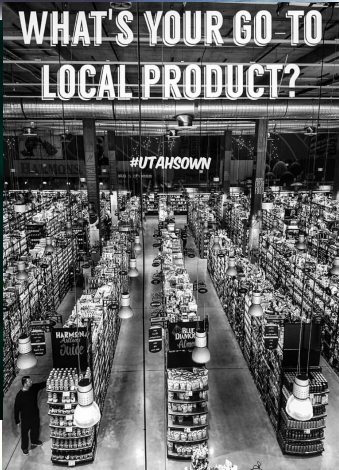




Marketing & Economic Development



UTAH GROWN



The Marketing and Economic Division is charged with promoting “the healthy growth of Utah agriculture.” The Division does this through the Utah’s Own program, participating in the Western United States Agricultural Trade Association (WUSATA), jr. livestock association, market news reporting, and the specialty crop grant program. The marketing staff includes Wayne Bradshaw, Ryan Parkinson, Andy Pierucci, Laurie Seron, and Mike Smoot.


Utah’ Own

Utah’s Own promotes local agriculture and food through a branding and marketing program. Companies growing or producing food locally join the program free of cost to utilize the Utah’s Own™ to help consumers readily identify local products.

- This year the Utah’s Own staff created a broad advertising campaign to increase consumer awareness of local products and the Utah’s Own™ brand. Utilizing billboards, UTA placement, KSL.com, Facebook, and Google adds the campaign created over **49.5** million impressions.
- Utah’s Own launched a new website in 2017 to better meet the needs of consumers. The new website is mobile friendly, updated, and a better experience for consumers looking for local products.

Other Division Highlights:

- Market news collects and reports commodity price information critical for agriculture producers and agribusinesses. To provide this important service the Division monitors livestock auctions in Cedar City, Salina, Willard, and Monroe weekly.
- In 2017 the 13 Western United States Agricultural Trade Association states hosted **41** activities all across the world. To date participating companies have sold **\$56** million in products.
- in 2016 the Division too on the responsibility of recruiting and oversight of the Specialty Crop Block Grant for Utah. During 2017, nearly **\$300,000** was distributed to organizations to enhance the competitiveness of specialty crops.




Animal & Wildlife Damage Prevention

The Utah Wildlife Services Program is a cooperative effort between the Utah Department of Agriculture and Food and the U.S. Department of Agriculture. Funding comes from state and federal sources, as well as from ranchers who pay a per-head assessment. The focus of the program is to protect livestock, primarily adult sheep, lambs and calves from predators, including:

- Coyotes
- Cougars
- Bears
- Ravens

Predator management is also needed to sustain and improve wildlife populations. WS works with the Utah Division of Wildlife Resources in **19** deer units, **11** sage grouse management areas, **6** bighorn sheep units, **3** pronghorn areas, and **5** waterfowl management areas.

Wildlife Services also plays a critical role in early detection and management of wildlife-borne diseases. Wildlife Services is conducting surveillance for early detection and response to highly pathogenic Avian Influenza. The program also assisted the Utah Division of Wildlife Resources remove and test mule deer where there is potential transmission of Chronic Wasting Disease. In 2016, WS staff trapped, banded, and relocated **137** raptors from Utah airports to prevent them from being struck by aircraft and threatening human safety.

Wildlife Services also provides technical assistance and training to the public about problems related to urban wildlife such as skunks, raccoons, birds and other animals. WS continues to conduct disease monitoring in the urban program and responds to human safety cases involving cougars or bears statewide when assistance is requested by the UDWR.



Sheep Losses to Predators

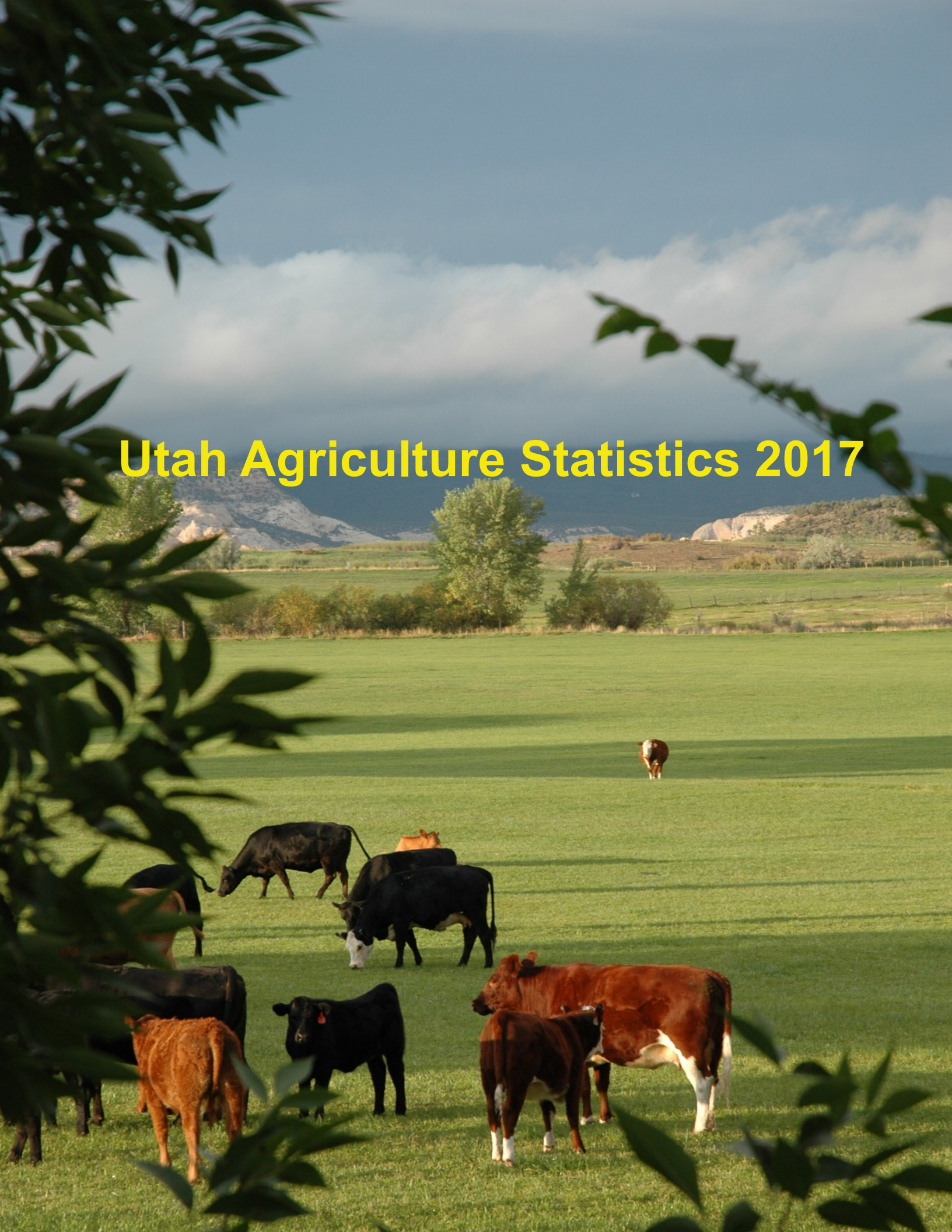
With the Program	Without (projected)
5%	30%



Calf Losses to Predators

With the Program	Without (projected)
>1%	5%

Utah Agriculture Statistics 2017



Rank & Quantity Produced, Selected Commodities – Utah, Leading State & United States: 2016

Commodity	Unit	Utah		Leading State		United States
		Rank	Production	State	Production	
Field Crops						
Barley.....	(1,000 Bu)	14	1,558	Idaho	62,060	199,282
Corn, Grain	(1,000 Bu)	40	5,075	Iowa	2,740,500	15,148,038
Corn, Silage	(1,000 Tons)	26	1,176	Wisconsin	16,590	125,670
Hay, All	(1,000 Tons)	21	2,600	Texas	12,439	134,781
Hay, Alfalfa	(1,000 Tons)	14	2,226	California	5,040	58,263
Hay, Other	(1,000 Tons)	37	374	Texas	11,750	76,518
Safflower Production	(1,000 Lbs)	5	10,935	California	135,300	220,090
Wheat, All ¹	(1,000 Bu)	29	7,184	Kansas	467,400	2,309,675
Wheat, Other Spring.....	(1,000 Bu)	9	464	North Dakota	269,100	534,027
Wheat, Winter.....	(1,000 Bu)	26	6,720	Kansas	467,400	1,671,532
Fruits						
Peach Production	(Tons)	11	5,160	California	569,000	778,820
Tart Cherry Production	(Mil Lbs)	2	53	Michigan	224	324
Livestock ²						
All Cattle & Calves	(1,000 Head)	35	820	Texas	12,300	93,585
All Cows ³	(1,000 Head)	33	430	Texas	4,950	40,559
Calf Crop	(1,000 Head)	31	380	Texas	4,250	35,083
Beef Cows ³	(1,000 Head)	28	338	Texas	4,460	31,210
Milk Cows ³	(1,000 Head)	22	92	California	1,755	9,349
Milk Production	(Mil Lbs)	21	2,095	California	40,469	212,436
All Chickens (Excl Broilers) ...	(1,000 Head)	20	6,622	Iowa	65,763	494,524
Layers on Hand Dec. 1	(1,000 Head)	20	5,252	Iowa	55,252	376,605
Egg Production ⁴	(Mil Eggs)	23	1,271	Iowa	13,608	101,953
All Hogs & Pigs	(1,000 Head)	15	700	Iowa	22,400	71,500
Breeding Hogs & Pigs	(1,000 Head)	16	75	Iowa	1,030	6,090
Pig Crop ⁴	(1,000 Head)	16	1,437	Iowa	22,514	125,556
Market Hogs & Pigs.....	(1,000 Head)	15	625	Iowa	21,370	65,410
Honey Production	(1,000 Lbs)	25	992	North Dakota	37,830	161,882
All Sheep & Lambs.....	(1,000 Head)	5	275	Texas	700	5,200
Breeding Sheep & Lambs.....	(1,000 Lambs)	4	255	Texas	560	3,855
Lamb Crop	(1,000 Head)	4	230	Texas	340	3,250
Market Sheep & Lambs.....	(1,000 Head)	15	20	California	260	1,345
Wool Production	(1,000 Lbs)	3	2,300	California	2,700	25,740
Mink Pelt Production.....	(Pelts)	2	768	Wisconsin	1,196	3,317
Trout Sold	(1,000 Dollars)	11	633	Idaho	50,298	104,941
Miscellaneous						
Farms.....	(Number)	37	18,100	Texas	241,500	2,060,000
Land in Farms.....	(1,000 Acres)	25	11,000	Texas	129,800	911,000
Average Size of Farm.....	(Acres)	12	608	Wyoming	2,612	442

¹ Excludes Durum wheat for Utah.

² Inventory January 1, 2017 for cattle & sheep; December 1, 2016 for hogs & chickens.

³ Cows & heifers that have calved.

⁴ Pig crop & egg production for the marketing year December 1, 2015-November 30, 2016.

Record Highs & Lows: Acreage, Yield & Production of Crops – Utah

Units	Record High		Record Low		Record Began
	(Quantity)	(Year)	(Quantity)	(Year)	(Year)
Corn for Grain					
Harvested (1,000 Acres)	34	2012	2	1963,1966	1882
Yield (Bushels/Acre)	178.0	2010	14.7	1889	1882
Production.. (1,000 Bushels)	5,678	2012	85	1934	1882
Corn for Silage					
Harvested..... (1,000 Acres)	80	1975, 1976	2	1920-1922	1919
Yield (Tons/Acre)	25.0	2011	6.0	1934	1919
Production..... (1,000 Tons)	1,501	1980	17	1921	1919
Barley					
Harvested..... (1,000 Acres)	190	1957	8	1898	1882
Yield (Bushels/Acre)	89.0	2010	22.0	1882	1882
Production.. (1,000 Bushels)	12,880	1982	242	1882	1882
Oats					
Harvested..... (1,000 Acres)	82	1910	2	2015	1882
Yield (Bushels/Acre)	85.0	2002, 2015	25.0	1882,1883	1882
Production.. (1,000 Bushels)	3,338	1914	170	2015	1882
All Wheat					
Harvested..... (1,000 Acres)	444	1953	65	1880,1881	1879
Yield (Bushels/Acre)	59.9	2016	15.4	1919	1879
Production.. (1,000 Bushels)	9,750	1986	1,139	1882	1879
Other Spring Wheat					
Harvested..... (1,000 Acres)	119	1919, 1920	7	2007	1919
Yield (Bushels/Acre)	65.0	1995	18.7	1919	1919
Production.. (1,000 Bushels)	3,366	1953	390	2002	1919
Winter Wheat					
Harvested..... (1,000 Acres)	342	1953	100	2002	1909
Yield (Bushels/Acre)	60.0	2016	12.7	1919	1909
Production.. (1,000 Bushels)	8,100	1986	1,862	1924	1909
All Hay					
Harvested..... (1,000 Acres)	760	2011	402	1909	1909
Yield (Tons/Acre)	3.93	1999	1.77	1924	1909
Production..... (1,000 Tons)	2,788	1999	679	1934	1909
Alfalfa Hay					
Harvested..... (1,000 Acres)	580	2011	359	1934	1919
Yield (Tons/Acre)	4.40	1993,1998,1999	1.67	1934	1919
Production..... (1,000 Tons)	2,420	1999	600	1934	1919
Other Hay					
Harvested..... (1,000 Acres)	180	2011	75	1934	1919
Yield (Tons/Acre)	2.40	2013	0.85	1934	1919
Production..... (1,000 Tons)	420	2013	64	1934	1919
Apples					
Utilized Prod..... (Million Lbs)	63	1987	3	1889	1889
Apricots					
Utilized Prod..... (Tons)	10,000	1957	0	1972,1975,1999	1929
Peaches (Freestone)					
Utilized Prod..... (Tons)	22,100	1922	750	1972	1899
Sweet Cherries					
Utilized Prod..... (Tons)	7,700	1968	0	1972	1938
Tart Cherries					
Utilized Prod..... (Million Lbs)	50	2014	1	1972	1938

Record Highs & Lows: Livestock, Poultry, Honey & Mink – Utah

Units	Record High		Record Low		Record Began (Year)
	(Quantity)	(Year)	(Quantity)	(Year)	
Cattle & Calves					
Inventory Jan. 1 (1,000 Hd)	950	1983	95	1867	1867
Calf Crop (Annual) (1,000 Hd)	400	2000, 2001	310	1935, 1984	1920
Beef Cows Jan. 1 ¹ (1,000 Hd)	374	1983	107	1939	1920
Milk Cows Jan. 1 ¹ (1,000 Hd)	126	1945	14	1867	1867
Milk Production (Annual) (Million Lbs)	2,220	2015	412	1924	1924
Cattle on Feed Jan. 1 (1,000 Hd)	81	1966	20	2017	1942
Hogs & Pigs					
Inventory Dec. 1 ² (1,000 Hd)	790	2007	4	1866-1868	1866
Sheep & Lambs					
Total Inventory Jan. 1 (1,000 Hd)	2,935	1931	260	2004	1920
Breeding Inventory Jan. 1 (1,000 Hd)	2,775	1931	157	1867	1867
Lamb Crop (Annual) (1,000 Hd)	1,736	1930	220	2010	1924
Mkt Sheep & Lambs Jan. 1 ... (1,000 Hd)	70	1995	18	1988	1937
Chickens					
Layers Dec. 1 (1,000 Hd)	5,252	2016	1,166	1935	1925
Egg Production ³ (Million Eggs)	1,271	2016	142	1924	1924
Honey					
Production (Annual) (1,000 Lbs)	4,368	1963	780	2010	1913
Mink					
Pelts Produced (1,000 Pelts)	959	2014	283	1973	1969

¹ Cows & heifers two years old & over prior to 1970; cows that have calved beginning in 1970.

² January 1, estimates discontinued in 1969. December 1, estimates beginning in 1969.

³ Annual egg production estimates cover the period December 1, previous year through November 30.

Number of Farms, Land in Farms, & Average Farm Size – Utah & United States: 2007-2016

[Annual sales of agricultural products of \$1,000 or more.]

Year	Utah			United States		
	Number of Farms	Land in Farms	Average Farm Size	Number of Farms	Land in Farms	Average Farm Size
	(Number)	(1,000 Acres)	(Acres)	(Number)	(1,000 Acres)	(Acres)
2007	16,700	11,100	665	2,204,950	921,460	418
2008	16,800	11,000	655	2,184,500	918,600	421
2009	17,200	11,000	640	2,169,660	917,590	423
2010	17,500	11,000	629	2,149,520	915,660	426
2011	17,900	11,000	615	2,131,240	914,420	429
2012	18,000	11,000	611	2,109,810	914,600	433
2013	18,200	11,000	604	2,102,010	914,030	435
2014	18,100	11,000	608	2,085,000	913,000	438
2015	18,100	11,000	608	2,068,000	912,000	441
2016	18,100	11,000	608	2,060,000	911,000	442

Number of Farms by Economic Sales Class – Utah: 2007-2016

Year	\$1000-\$9,999	\$10,000-\$99,999	\$100,000-\$249,999	\$250,000-\$499,999	\$500,000-\$999,999 ¹	\$1,000,000 & Over ²	Total
	(Number)	(Number)	(Number)	(Number)	(Number)	(Number)	(Number)
2007	10,300	4,700	840	410	450	(NA)	16,700
2008	10,200	4,800	870	440	490	(NA)	16,800
2009	10,500	4,900	850	440	510	(NA)	17,200
2010	10,600	5,100	850	420	530	(NA)	17,500
2011	10,700	5,200	880	520	600	(NA)	17,900
2012	10,650	5,300	930	540	580	(NA)	18,000
2013	10,700	5,400	1,000	550	270	280	18,200
2014	10,600	5,500	900	600	220	280	18,100
2015	10,600	5,500	900	600	240	260	18,100
2016	10,700	5,500	800	600	240	260	18,100

¹ \$500,000 & over before 2013 & \$500,000 - \$999,999 2013 & later.

² \$1,000,000 & over economic sales class not published before 2013.

(NA) Not available.

Farms: Acres by Economic Sales Class – Utah: 2007-2016

Year	\$1000-\$9,999	\$10,000-\$99,999	\$100,000-\$249,999	\$250,000-\$499,999	\$500,000-\$999,999 ¹	\$1,000,000 & Over ²	Total
	(1,000 Acres)	(1,000 Acres)	(1,000 Acres)	(1,000 Acres)	(1,000 Acres)	(1,000 Acres)	(1,000 Acres)
2007	850	2,250	1,500	1,200	5,300	(NA)	11,100
2008	850	2,300	1,400	1,150	5,300	(NA)	11,000
2009	800	2,200	1,400	1,200	5,400	(NA)	11,000
2010	800	2,000	1,300	1,300	5,600	(NA)	11,000
2011	700	1,900	1,300	1,400	5,700	(NA)	11,000
2012	650	1,750	1,300	1,500	5,800	(NA)	11,000
2013	650	1,850	1,200	1,400	4,900	1,000	11,000
2014	650	1,900	1,400	1,550	4,500	1,000	11,000
2015	650	1,900	1,400	1,550	4,500	1,000	11,000
2016	700	2,000	1,300	1,450	4,550	1,000	11,000

¹ \$500,000 & over before 2013 & \$500,000 - \$999,999 2013 & later.

² \$1,000,000 & over economic sales class not published before 2013.

(NA) Not available.

Farm Income: Cash Receipts by Commodity – Utah: 2011-2016

Utah	2011	2012	2013	2014	2015	2016
	\$1,000	\$1,000	\$1,000	\$1,000	\$1,000	\$1,000
All Commodities	1,697,988	1,815,245	1,999,276	2,378,514	1,973,592	1,657,681
Animals & Products	1,197,783	1,238,130	1,445,925	1,844,476	1,521,878	1,244,967
Meat Animals	528,555	577,745	768,569	1,033,417	782,403	656,068
Cattle & Calves	320,289	383,545	554,600	795,236	628,075	515,192
Hogs	208,266	194,200	213,969	238,181	154,328	140,876
Dairy Products, Milk	401,408	379,984	413,010	514,527	375,190	332,960
Poultry & Eggs	142,695	148,810	153,498	178,408	276,852	173,797
Chicken Eggs	70,840	72,537	81,139	107,255	199,491	73,238
Farm Chickens.....	6	6	7	5	8	10
Turkeys.....	71,849	76,267	72,352	71,148	77,353	100,549
Miscellaneous Animals & Products	125,125	131,591	110,848	118,124	87,433	82,142
Aquaculture	516	472	617	604	630	633
Trout.....	516	472	617	604	630	633
Sheep and Lambs.....	(NA)	(NA)	(NA)	(NA)	(NA)	(NA)
Honey	1,570	1,777	2,132	1,730	2,177	1,895
Mohair.....	3	3	3	3	3	3
Other Animals & Products	118,476	125,339	104,576	111,718	80,560	75,471
All Other Animals & Products..	52,564	59,427	56,418	56,398	52,788	48,591
Mink Pelts	65,912	65,912	48,158	55,320	27,772	26,880
Wool	4,560	4,000	3,520	4,068	4,063	4,140
Crops	500,205	577,116	553,351	534,038	451,714	412,713
Food Grains	49,151	58,433	41,996	42,043	30,677	28,224
Wheat	49,151	58,433	41,996	42,043	30,677	28,224
Feed Crops	278,254	319,066	316,697	292,487	235,027	195,837
Barley	10,103	10,091	7,937	6,890	3,798	3,476
Corn.....	24,264	36,040	33,281	24,387	15,395	14,232
Hay	243,153	272,106	274,575	260,471	215,435	178,039
Oats.....	734	828	905	738	399	89
Oil Crops	4,308	4,675	3,254	4,218	4,015	2,701
Safflower.....	4,308	4,675	3,254	4,218	4,015	2,701
Vegetables & Melons	3,271	8,618	8,412	6,634	7,392	7,392
Onions	3,271	8,618	8,412	6,634	7,392	7,392
Onions, Storage	3,271	8,618	8,412	6,634	7,392	7,392
Fruits & Nuts	19,554	31,770	28,080	34,029	22,818	24,503
Apples.....	4,054	3,635	7,607	4,907	4,896	(NA)
Apricots.....	219	248	129	330	7	(NA)
Cherries	11,137	22,254	14,802	22,711	13,718	17,533
Cherries, Sweet.....	1,132	1,854	2,041	1,217	193	(NA)
Cherries, Tart	10,005	20,400	12,761	21,494	13,525	17,533
Peaches.....	4,144	5,633	5,542	6,081	4,197	6,970
All Other Crops.....	145,668	154,554	154,912	154,627	151,786	154,056
Mushrooms.....	2,666	14,926	14,987	15,146	16,174	16,165
Miscellaneous Crops	143,002	139,628	139,925	139,481	135,612	137,891

Data as of August 30, 2017.

(NA) Not available.

Values are rounded to the nearest thousand.

Data source: USDA Economic Research Service. www.ers.usda.gov

Farm Income Indicators – Utah: 2011-2016

Utah	2011	2012	2013	2014	2015	2016
	\$1,000	\$1,000	\$1,000	\$1,000	\$1,000	\$1,000
Value of Agricultural Sector Production.....	2,001,528	1,974,699	2,315,414	2,554,195	2,311,515	1,878,221
Value of Crop Production	531,693	535,120	581,421	508,063	449,199	423,467
Crop Cash Receipts	500,205	577,116	553,351	534,038	451,714	412,713
Value of Animals & Products Production.....	1,209,313	1,201,102	1,466,611	1,792,122	1,631,233	1,223,304
Animals & Products Cash Receipts.....	1,197,783	1,238,130	1,445,925	1,844,476	1,521,878	1,244,967
Net Government Transactions.....	-15,161	-14,868	-9,461	9,408	-9,926	-16,451
Intermediate Product Expenses ¹	1,075,771	1,052,992	1,170,088	1,348,644	1,155,751	953,321
Farm Origin	561,632	535,660	659,618	791,952	681,635	490,474
Feed Purchases.....	480,254	444,181	442,644	520,614	445,718	360,417
Livestock & Poultry Purchases	45,885	46,880	159,632	218,528	199,389	88,432
Seed Purchases	35,494	44,599	57,341	52,810	36,529	41,626
Manufactured Inputs.....	221,780	212,724	213,925	212,096	180,900	162,521
Electricity	44,948	41,825	38,289	36,354	39,821	30,491
Fertilizer, Lime, & Soil Conditioners.....	51,199	60,702	56,366	55,203	53,764	46,249
Pesticides	15,549	18,708	18,517	21,239	18,708	19,854
Fuel & Oils	110,084	91,489	100,753	99,301	68,607	65,928
Other Intermediate Expenses ¹	292,359	304,608	296,545	344,596	293,216	300,326
Machine Hire & Custom Work.....	17,594	23,056	21,477	26,305	16,955	21,867
Marketing, Storage, & Transportation	40,298	42,377	31,079	44,477	35,274	42,613
Repair & Maintenance	93,807	89,099	98,032	108,250	96,184	83,853
Miscellaneous Expenses ¹	140,660	150,077	145,957	165,564	144,803	151,992
Total Insurance Premiums ²	31,160	22,528	27,397	31,571	23,531	23,936
Federal Commodity Insurance Premiums....	1,816	1,713	1,169	1,366	1,495	1,121
Irrigation	13,487	12,356	12,807	14,591	15,652	15,380
Contract Labor.....	10,904	9,487	12,104	19,459	10,511	16,138
Gross Value Added	899,692	897,351	1,123,761	1,195,500	1,135,326	892,310
Capital Consumption ¹	130,525	225,736	252,603	335,717	268,982	293,467
Net Value Added	769,167	671,615	871,159	859,783	866,344	598,844
Factor Payments to Stakeholders	274,491	305,494	330,261	310,483	281,291	308,519
Hired Labor & Non-Cash Employee Compensation	172,796	193,744	219,316	211,206	177,579	203,934
Net Rent Paid to Operator Landlords	324	245	398	1,950	2,108	1,500
Net Rent Paid to Non-Operator Landlords.....	24,995	18,870	30,651	12,844	13,889	9,880
Total Interest Expenses ¹	76,375	92,635	79,897	84,482	87,715	93,205
Net Farm Income.....	494,677	366,121	540,897	549,301	585,053	290,324

Data as of August 30, 2017

Values are rounded to the nearest hundred. When 'Real (2017 dollars)' is selected, nominal values are adjusted for inflation using the chain-type GDP deflator, base year=2017.

¹ Includes expenses associated with operator dwellings.

² Includes federal and private crop and livestock insurance premiums as well as casualty, hail, motor vehicle and all other insurance premiums.

Data Source: USDA Economic Research Service. www.ers.usda.gov

Agricultural Exports: Estimated Value by Commodity Group – Utah: 2011-2015

Utah	2011	2012	2013	2014	2015
	Million Dollars				
Beef & Veal	27.9	32.0	50.8	70.2	51.7
Pork.....	58.9	55.5	54.4	60.5	41.4
Hides & Skins.....	16.8	18.2	26.4	28.3	19.6
Other Livestock Products ¹	76.6	82.3	63.9	55.1	38.8
Dairy Products.....	48.6	52.5	68.9	74.0	55.1
Broiler Meat.....	--	--	--	--	--
Other Poultry Products ²	22.8	22.9	25.0	27.4	27.1
Vegetables, Fresh	0.4	1.1	1.1	0.9	0.9
Vegetables, Processed	0.7	2.1	2.0	1.7	1.8
Fruits, Fresh	4.9	7.6	7.0	8.2	5.2
Fruits, Processed	4.5	6.5	6.2	7.3	5.0
Tree Nuts	--	--	--	--	--
Rice.....	--	--	--	--	--
Wheat.....	40.6	28.9	31.3	25.8	17.0
Corn	5.3	4.7	3.5	4.7	2.6
Feeds & Other Feed Grains ³	29.2	30.6	41.4	45.4	42.7
Grain Products, Processed	12.4	13.6	14.8	15.0	13.7
Soybeans	--	--	--	--	--
Soybean Meal	--	--	--	--	--
Vegetable Oils.....	0.5	0.4	0.2	0.3	0.3
Other Oilseeds & Products ⁴	3.6	3.4	3.2	6.5	4.3
Cotton.....	--	--	--	--	--
Tobacco	--	--	--	--	--
Other Plant Products ⁵	74.3	84.6	91.3	97.7	92.8
Total Agricultural Exports	427.8	447.0	491.5	529.0	420.1
Total Animal Products	251.5	263.5	289.4	315.4	233.8
Total Plant Products	176.4	183.5	202.1	213.6	186.3

¹ Includes other non-poultry meats, animal fat, live farm animals, and other animal parts.

² Includes turkey meat, eggs, and other fowl products.

³ Includes processed feeds, fodder, barley, oats, rye, and sorghum.

⁴ Includes peanuts (oilstock), other oil crops, corn meal, other oilcake and meal, protein substances, bran and residues.

⁵ Includes sweeteners and products, other horticulture products, planting seeds, cocoa, coffee, and other processed foods.

Data sources: USDA Economic Research Service; USDA Foreign Agricultural Service (Global Agricultural Trade System)

ANNUAL CROP SUMMARY

2016 UTAH HIGHLIGHTS

The 2016 corn for grain crop was estimated at 5.08 million bushels, 73 percent above last year's production of 2.94 million bushels, according to the December 1 Agricultural Survey conducted by the Mountain Regional Field Office of the National Agricultural Statistics Service, USDA. The average yield of 175.0 bushels per acre was 2.0 bushels per acre above the yield achieved last year. Area harvested for grain in 2016, at 29,000 acres, was 12,000 acres above last year. Acreage cut for corn silage was estimated at 49,000 acres, up 4,000 acres from last year, with production estimated at 1.18 million tons compared with 1.04 million tons produced last year.

Utah's barley seeded area, at 29,000 acres, is up 2,000 acres from last year. Harvested area, at 19,000 acres, is up 3,000 acres from 2015. Barley yield, at 82.0 bushels per acre is down 2.0 bushels per acre from last year. Barley production in 2016 is estimated at 1.56 million bushels, up 16 percent from the previous year.

All wheat production in Utah, estimated at 7.18 million bushels, is up 16 percent from 2015. All wheat yield was 59.9 bushels per acre, up 11.4 bushels per acre from a year ago. Winter wheat producers seeded 120,000 acres in the fall of 2015 for harvest in 2016, down from 125,000 acres seeded for the previous year's crop. Acreage harvested for grain decreased 7,000 acres from last year to 112,000 acres in 2016. Winter wheat production is estimated at 6.72 million bushels, up 18 percent from last year. Winter wheat yield, at 60.0 bushels per acre, is up 12.0 bushels per acre from last year, and is a new record high yield, 8.0 bushels per acre above the previous record yield of 52.0 bushels per acre, set in 1999. Spring wheat seedings, at 9,000 acres, are down 1,000 acres from last year. Acreage harvested totaled 8,000 acres, down from 9,000 acres harvested last year. Spring wheat production is estimated at 464,000 bushels, down 6 percent from last year. Spring wheat yield, at 58.0 bushels per acre, is up 3.0 bushels per acre from last year. All hay production for 2016 is estimated at 2.60 million tons, up 6 percent from the 2015 total. Alfalfa hay production was estimated at 2.23 million tons from 530,000 acres harvested, up 135,000 tons from 2015. Average yield for the 2016 crop was 4.20 tons per acre, 0.10 tons per acre above last year. All other hay production totaled 374,000 tons from 170,000 acres harvested, up 6,000 tons from 2015. The average yield of 2.20 tons per acre was down 0.10 tons per acre from last year. New seedings of alfalfa and alfalfa mixtures in Utah were estimated at 55,000 acres, down 15 percent from 2015.

As of December 1, producers in Utah were storing 1.20 million tons of all hay, up 4 percent from the 1.15 million tons stored last year.

Production of safflower in 2016 was 10.94 million pounds, compared with 14.11 million pounds in 2015. Planted acres were 14,000, down 2,000 acres from last year. Harvested acres were 13,500, compared with 15,500 acres in 2015. Safflower yields averaged 810 pounds per acre in 2016, down 100 pounds per acre from last year. Winter wheat seedings last fall for the 2017 crop year are estimated at 115,000 acres, down 4 percent from last year.

Barley: Area Planted & Harvested, Yield, Production, Price, & Value – Utah: 2007-2016

Year	Area Planted	Area Harvested	Yield per Acre	Production	Price per Bushel ¹	Value of Production
	(1,000 Acres)	(1,000 Acres)	(Bushels)	(1,000 Bushels)	(Dollars)	(1,000 Dollars)
2007.....	38	22	81.0	1,782	3.99	7,110
2008.....	40	27	84.0	2,268	4.41	10,002
2009.....	40	30	83.0	2,490	2.56	6,374
2010.....	39	27	89.0	2,403	3.43	8,242
2011.....	35	22	81.0	1,782	5.53	9,854
2012.....	44	26	78.0	2,028	5.87	11,904
2013.....	40	30	78.0	2,340	4.17	9,758
2014.....	32	20	83.0	1,660	3.13	5,196
2015.....	27	16	84.0	1,344	2.97	3,992
2016.....	29	19	82.0	1,558	2.36	3,661

¹ Marketing year average price.

Corn for Grain: Area Planted & Harvested, Yield, Production, Price, & Value – Utah: 2007-2016

Year	Area Planted	Area Harvested	Yield per Acre	Production	Price per Bushel ¹	Value of Production
	(1,000 Acres)	(1,000 Acres)	(Bushels)	(1,000 Bushels)	(Dollars)	(1,000 Dollars)
2007.....	70	22	150.0	3,300	4.18	13,794
2008.....	70	23	157.0	3,611	4.40	15,888
2009.....	65	17	150.0	2,550	4.52	11,526
2010.....	70	23	178.0	4,094	5.75	23,541
2011.....	85	30	164.0	4,920	6.97	34,292
2012.....	92	34	167.0	5,678	7.59	43,096
2013.....	83	31	170.0	5,270	5.47	28,827
2014.....	75	28	160.0	4,480	4.13	18,502
2015.....	65	17	173.0	2,941	4.68	13,764
2016.....	80	29	175.0	5,075	3.80	19,285

¹ Marketing year average price.

Corn for Silage: Area Harvested, Yield, & Production – Utah: 2007-2016

Year	Area Harvested	Yield per Acre	Production	
	(1,000 Acres)	(Tons)	(1,000 Tons)	
2007.....		47	21.0	987
2008.....		47	23.0	1,081
2009.....		47	23.0	1,081
2010.....		46	23.0	1,058
2011.....		54	25.0	1,350
2012.....		56	22.0	1,232
2013.....		49	23.0	1,127
2014.....		45	22.0	990
2015.....		45	23.0	1,035
2016.....		49	24.0	1,176

Alfalfa Hay: Area Harvested, Yield, Production, Price, & Value – Utah: 2007-2016

Year	Area Harvested	Yield	Production	Price per Ton ¹	Value of Production
	(1,000 Acres)	(Tons)	(1,000 Tons)	(Dollars)	(1,000 Dollars)
2007	550	4.10	2,255	131.00	295,405
2008	550	4.20	2,310	170.00	392,700
2009	530	4.20	2,226	102.00	227,052
2010	540	4.00	2,160	106.00	228,960
2011	580	4.10	2,378	185.00	439,930
2012	500	4.10	2,050	190.00	389,500
2013	550	4.20	2,310	182.00	420,420
2014	520	3.90	2,028	188.00	381,264
2015	510	4.10	2,091	162.00	338,742
2016	530	4.20	2,226	127.00	282,702

¹ Marketing year average price.

Other Hay: Area Harvested, Yield, Production, Price, & Value – Utah: 2007-2016

Year	Area Harvested	Yield	Production	Price per Ton ¹	Value of Production
	(1,000 Acres)	(Tons)	(1,000 Tons)	(Dollars)	(1,000 Dollars)
2007	150	2.20	330	113.00	37,290
2008	145	2.20	319	137.00	43,703
2009	160	2.10	336	94.00	31,584
2010	160	2.20	352	98.00	34,496
2011	180	2.20	396	152.00	60,192
2012	160	2.10	336	152.00	51,072
2013	175	2.40	420	152.00	63,840
2014	160	2.30	368	154.00	56,672
2015	160	2.30	368	131.00	48,208
2016	170	2.20	374	104.00	38,896

¹ Marketing year average price.

All Hay: Area Harvested, Yield, Production, Price, & Value – Utah: 2007-2016

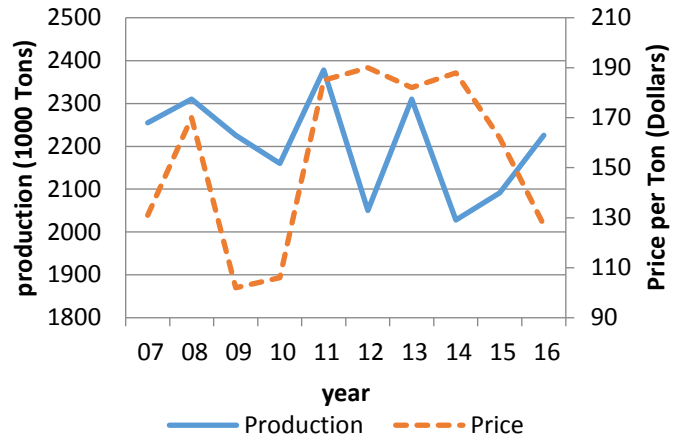
Year	Area Harvested	Yield	Production	Price per Ton ¹	Value of Production
	(1,000 Acres)	(Tons)	(1,000 Tons)	(Dollars)	(1,000 Dollars)
2007	700	3.69	2,585	129.00	332,695
2008	695	3.78	2,629	167.00	436,403
2009	690	3.71	2,562	102.00	258,636
2010	700	3.59	2,512	106.00	263,456
2011	760	3.65	2,774	185.00	500,122
2012	660	3.62	2,386	189.00	440,572
2013	725	3.77	2,730	182.00	484,260
2014	680	3.52	2,396	188.00	437,936
2015	670	3.67	2,459	162.00	386,950
2016	700	3.71	2,600	127.00	330,200

¹ Marketing year average price.

Hay Stocks: Position & Month – Utah: 2007-2016

Year	On Farms May 1	On Farms December 1
	(1,000 Tons)	(1,000 Tons)
2007.....	185	1,130
2008.....	215	1,300
2009.....	285	1,330
2010.....	245	1,050
2011.....	144	1,420
2012.....	350	900
2013.....	230	1,250
2014.....	300	1,190
2015.....	430	1,150
2016.....	410	1,200

Alfalfa Hay Production & Price — Utah: 2007-2016



Oats: Area Planted & Harvested, Yield, Production, Price, & Value – Utah: 2007-2015

Year	Area Planted	Area Harvested	Yield per Acre	Production	Price per Bushel ¹	Value of Production
	(1,000 Acres)	(1,000 Acres)	(Bushels)	(1,000 Bushels)	(Dollars)	(1,000 Dollars)
2007.....	35.0	4.0	80.0	320	2.65	848
2008.....	40.0	3.0	75.0	225	3.20	720
2009.....	45.0	4.0	81.0	324	2.50	810
2010.....	40.0	4.0	74.0	296	3.60	1,066
2011.....	33.0	3.0	81.0	243	4.35	1,057
2012.....	30.0	3.0	76.0	228	4.40	1,003
2013.....	40.0	5.0	62.0	310	4.42	1,370
2014.....	20.0	3.0	69.0	207	3.75	776
2015.....	20.0	2.0	85.0	170	3.61	614
2016.....	(2)	(2)	(2)	(2)	(2)	(2)

¹ Marketing year average price.

² Estimates discontinued in 2016.

Winter Wheat: Area Planted & Harvested, Yield, Production, Price, & Value – Utah: 2007-2016

Year	Area Planted	Area Harvested	Yield per Acre	Production	Price per Bushel ¹	Value of Production
	(1,000 Acres)	(1,000 Acres)	(Bushels)	(1,000 Bushels)	(Dollars)	(1,000 Dollars)
2007.....	135	125	42.0	5,250	8.35	43,838
2008.....	130	120	41.0	4,920	7.40	36,408
2009.....	140	135	50.0	6,750	5.70	38,475
2010.....	135	118	48.0	5,664	7.20	40,781
2011.....	130	124	50.0	6,200	7.62	47,244
2012.....	125	109	47.0	5,123	8.97	45,953
2013.....	120	110	44.0	4,840	7.71	37,316
2014.....	120	109	50.0	5,450	6.85	37,333
2015.....	125	119	48.0	5,712	4.77	27,246
2016.....	120	112	60.0	6,720	3.98	26,746

¹ Marketing year average price.

Other Spring Wheat: Area Planted & Harvested, Yield, Production, Price, & Value – Utah: 2007-2016

Year	Area Planted	Area Harvested	Yield per acre	Production	Price per Bushel ¹	Value of Production
	(1,000 Acres)	(1,000 Acres)	(Bushels)	(1,000 Bushels)	(Dollars)	(1,000 Dollars)
2007.....	11	7	58.0	406	7.35	2,984
2008.....	20	19	44.0	836	11.30	9,447
2009.....	14	12	44.0	528	8.69	4,588
2010.....	16	13	55.0	715	9.27	6,628
2011.....	21	20	46.0	920	10.90	10,028
2012.....	15	13	40.0	520	11.50	5,980
2013.....	18	14	46.0	644	8.66	5,577
2014.....	10	8	54.0	432	8.58	3,707
2015.....	10	9	55.0	495	7.00	3,465
2016.....	9	8	58.0	464	5.50	2,552

¹ Marketing year average price.

All Wheat: Area Planted & Harvested, Yield, Production, Price, & Value – Utah: 2007-2016

Year	Area Planted	Area Harvested	Yield per Acre	Production	Price per Bushel ¹	Value of Production
	(1,000 Acres)	(1,000 Acres)	(Bushels)	(1,000 Bushels)	(Dollars)	(1,000 Dollars)
2007.....	146	132	42.8	5,656	8.30	46,822
2008.....	150	139	41.4	5,756	7.97	45,855
2009.....	154	147	49.5	7,278	5.92	43,063
2010.....	151	131	48.7	6,379	7.43	47,409
2011.....	151	144	49.4	7,120	8.26	57,272
2012.....	140	122	46.3	5,643	9.59	51,933
2013.....	138	124	44.2	5,484	7.94	42,893
2014.....	130	117	50.3	5,882	7.07	41,040
2015.....	135	128	48.5	6,207	5.18	30,711
2016.....	129	120	59.9	7,184	4.30	30,891

¹ Marketing year average price.

Usual Planting & Harvesting Dates by Crop: Utah

Crop	Mar	Apr	May	Jun	Jul	Aug	Sep	Oct	Nov	Dec
Corn for Grain			Apr 30-May 20					Oct 10-Oct 30		
Corn for Silage			May 5-May 25				Sep 20-Oct 5			
Grains, Small										
Barley, Spring		Apr 1-Apr 20				Jul 25-Aug 15				
Oats, Spring		Apr 10-May 5				Aug 15-Sep 10				
Wheat, Spring		Apr 1-Apr 20				Aug 5-Aug 25				
Wheat, Winter					Jul 25-Aug 10		Aug 25-Oct 5			
Hay, Alfalfa				Jun 1-Oct 25						
Hay, Other					Jul 10-Aug 25					

Planting

Harvest

Barley Stocks: Located Off Farm by Quarter – Utah: 2008-2017 ¹

Year	March 1	June 1	September 1	December 1
	(Bushels)	(Bushels)	(Bushels)	(Bushels)
2008.....	327,000	111,000	344,000	238,000
2009.....	240,000	220,000	459,000	688,000
2010.....	147,000	122,000	415,000	287,000
2011.....	117,000	84,000	461,000	344,000
2012.....	184,000	122,000	276,000	(D)
2013.....	(D)	100,000	277,000	505,000
2014.....	(D)	159,000	269,000	396,000
2015.....	293,000	94,000	400,000	363,000
2016.....	(D)	98,000	327,000	(D)
2017.....	255,000	(D)	(D)	(2)

Corn Stocks: Located Off Farm by Quarter – Utah: 2008-2017 ¹

Year	March 1	June 1	September 1	December 1
	(Bushels)	(Bushels)	(Bushels)	(Bushels)
2008.....	1,294,000	1,419,000	1,068,000	(D)
2009.....	1,084,000	1,040,000	1,023,000	1,066,000
2010.....	1,208,000	974,000	599,000	883,000
2011.....	949,000	956,000	830,000	1,010,000
2012.....	786,000	(D)	975,000	930,000
2013.....	566,000	(D)	(D)	861,000
2014.....	544,000	(D)	(D)	737,000
2015.....	420,000	(D)	(D)	670,000
2016.....	(D)	(D)	(D)	694,000
2017.....	(D)	212,000	(D)	(2)

Oat Stocks: Located Off Farm by Quarter – Utah: 2008-2017 ¹

Year	March 1	June 1	September 1	December 1
	(Bushels)	(Bushels)	(Bushels)	(Bushels)
2008.....	(D)	(D)	30,000	33,000
2009.....	18,000	22,000	52,000	39,000
2010.....	40,000	20,000	48,000	49,000
2011.....	43,000	23,000	134,000	(D)
2012.....	67,000	61,000	(D)	49,000
2013.....	50,000	6,000	(D)	52,000
2014.....	28,000	(D)	44,000	48,000
2015.....	37,000	22,000	(D)	(D)
2016.....	47,000	24,000	(D)	(D)
2017.....	54,000	16,000	25,000	(2)

Wheat Stocks: Located Off Farm by Quarter – Utah: 2008-2017 ¹

Year	March 1	June 1	September 1	December 1
	(Bushels)	(Bushels)	(Bushels)	(Bushels)
2008.....	4,147,000	3,114,000	4,789,000	3,975,000
2009.....	4,062,000	3,301,000	2,745,000	4,026,000
2010.....	4,612,000	2,972,000	5,365,000	5,199,000
2011.....	4,779,000	1,133,000	4,699,000	4,304,000
2012.....	4,700,000	3,517,000	4,050,000	4,418,000
2013.....	4,043,000	3,719,000	4,880,000	4,577,000
2014.....	4,149,000	3,746,000	5,150,000	4,786,000
2015.....	4,518,000	4,891,000	6,420,000	5,517,000
2016.....	5,147,000	4,641,000	5,423,000	5,473,000
2017.....	4,118,000	3,843,000	6,299,000	(2)

(D) Withheld to avoid disclosing data for individual operations.

¹ Includes stocks at mills, elevators, terminals, and processors.

² Estimates available in the December Grain Stocks Release.

Apples: Acreage, Yield, Production, Price & Value – Utah: 2007-2016

Year	Bearing Acreage	Yield per Acre ¹	Production		Price per Pound	Value of Utilized Production
			Total	Utilized		
	(Acres)	(Pounds)	(Million Pounds)	(Million Pounds)	(Dollars)	(1,000 Dollars)
2007.....	1,400	13,600	19.0	18.0	0.329	5,916
2008.....	1,400	8,570	12.0	11.6	0.286	3,315
2009.....	1,400	12,900	18.0	16.0	0.296	4,742
2010.....	1,400	8,570	12.0	11.7	0.250	2,928
2011.....	1,400	13,600	19.0	18.3	0.222	4,054
2012.....	1,400	10,000	14.0	13.8	0.263	3,635
2013.....	1,300	12,700	16.5	15.8	0.481	7,607
2014.....	1,300	17,700	23.0	22.4	0.219	4,907
2015.....	1,200	12,500	15.0	14.9	0.329	4,896
2016.....	(2)	(2)	(2)	(2)	(2)	(2)

¹ Yield is based on total production, which includes unharvested production and fruit harvested but not sold due to market conditions.

² Estimates discontinued in 2016.

Apricot: Acreage, Yield, Production, Price & Value – Utah: 2008-2016

Year	Bearing Acreage	Yield per Acre ¹	Production		Price per Ton	Value of Utilized Production
			Total	Utilized		
	(Acres)	(Tons)	(Tons)	(Tons)	(Dollars)	(1,000 Dollars)
2007.....	(D)	(D)	260	260	815.00	212
2008.....	(D)	(D)	410	380	468.00	178
2009.....	(D)	(D)	320	290	862.00	250
2010.....	(D)	(D)	280	250	432.00	108
2011.....	(D)	(D)	200	170	1,290.00	219
2012.....	(D)	(D)	300	270	919.00	248
2013.....	(D)	(D)	135	128	1,010.00	129
2014.....	120	1.90	228	218	1,510.00	330
2015.....	120	0.06	7	7	(D)	(D)
2016.....	(2)	(2)	(2)	(2)	(2)	(2)

(D) Withheld to avoid disclosing data for individual operations.

¹ Yield is based on total production.

² Estimates discontinued in 2016.

Sweet Cherry: Acreage, Yield, Production, Price & Value – Utah: 2008-2016

Year	Bearing Acreage	Yield per Acre ¹	Production		Price per Ton	Value of Utilized Production
			Total	Utilized		
	(Acres)	(Tons)	(Tons)	(Tons)	(Dollars)	(1,000 Dollars)
2007.....	550	2.27	1,250	1,250	1,380.00	1,722
2008.....	500	0.10	50	50	2,440.00	122
2009.....	500	3.08	1,540	1,330	1,680.00	2,231
2010.....	500	2.20	1,100	1,080	1,330.00	1,433
2011.....	500	1.60	800	770	1,470.00	1,132
2012.....	500	2.60	1,300	1,280	1,450.00	1,854
2013.....	500	1.66	830	820	2,490.00	2,041
2014.....	400	2.10	840	810	1,500.00	1,217
2015.....	300	0.77	230	226	854.00	193
2016.....	(2)	(2)	(2)	(2)	(2)	(2)

¹ Yield is based on total production.

² Estimates discontinued in 2016.

Tart Cherry: Acreage, Yield, Production, Price & Value – Utah: 2008-2016

Year	Bearing Acreage	Yield per Acre ¹	Production		Price per Pound	Value of Utilized Production
			Total	Utilized		
	(Acres)	(Pounds)	(Million Pounds)	(Million Pounds)	(Dollars)	(1,000 Dollars)
2007.....	2,800	7,140	20.0	19.0	0.250	4,750
2008.....	2,900	6,900	20.0	19.0	0.330	6,270
2009.....	3,300	14,200	47.0	34.0	0.270	9,180
2010.....	3,300	6,970	23.0	22.5	0.270	6,075
2011.....	3,300	10,600	35.0	34.5	0.290	10,005
2012.....	3,300	12,100	40.0	40.0	0.510	20,400
2013.....	3,300	8,120	26.8	26.8	0.476	12,761
2014.....	3,300	15,500	51.0	49.8	0.432	21,494
2015.....	3,100	13,100	40.7	40.3	0.336	13,525
2016.....	3,100	17,000	52.8	49.6	0.353	17,533

¹ Yield is based on total production.

Peaches: Acreage, Yield, Production, Price & Value – Utah: 2007-2016

Year	Bearing Acreage	Yield per Acre ¹	Production		Price per Ton	Value of Utilized Production
			Total	Utilized		
	(Acres)	(Tons)	(Tons)	(Tons)	(Dollars)	(1,000 Dollars)
2007.....	1,500	3.09	4,500	4,400	667.00	2,934
2008.....	1,500	3.33	5,000	4,500	868.00	3,906
2009.....	1,500	3.87	5,800	5,500	1,040.00	5,720
2010.....	1,500	2.87	4,300	4,240	691.00	2,929
2011.....	1,500	2.87	4,300	4,100	1,010.00	4,144
2012.....	1,500	3.53	5,300	5,200	1,080.00	5,633
2013.....	1,300	4.17	5,421	5,141	1,080.00	5,542
2014.....	1,300	5.00	6,500	6,200	981.00	6,081
2015.....	1,300	3.00	3,900	3,880	1,080.00	4,197
2016.....	1,200	4.30	5,160	4,250	1,640.00	6,970

¹ Yield is based on total production.

Operations: All Cattle & Calves – Utah: 2002, 2007 & 2012

All Cattle & Calves	2002	2007	2012
	(Number)	(Number)	(Number)
Operations with			
1 - 9 Head.....	1,741	2,208	3,412
10 - 19 Head.....	912	1,081	1,348
20 - 49 Head.....	1,289	1,521	1,604
50 - 99 Head.....	875	977	864
100 - 199 Head.....	737	819	600
200 - 499 Head.....	726	595	490
500 Head or More	408	380	307

Data Source: U.S. Census of Agriculture

Operations with Beef Cows – Utah: 2002, 2007 & 2012

Beef Cows	2002	2007	2012
	(Number)	(Number)	(Number)
Operations with			
1 - 9 Head.....	1,521	1,821	2,838
10 - 19 Head.....	809	863	1,113
20 - 49 Head.....	1,077	1,172	1,307
50 - 99 Head.....	721	768	639
100 - 199 Head.....	508	503	483
200 - 499 Head.....	322	359	321
500 Head or More	97	103	126

Data Source: U.S. Census of Agriculture

Operations With Milk Cows – Utah: 2002, 2007 & 2012

Milk Cows	2002	2007	2012
	(Number)	(Number)	(Number)
Operations with			
1 - 9 Head.....	274	174	256
10 - 19 Head.....	14	8	15
20 - 49 Head.....	40	22	31
50 - 99 Head.....	88	53	30
100 - 199 Head.....	140	92	54
200 - 499 Head.....	81	59	45
500 Head or More	43	42	46

Data Source: U.S. Census of Agriculture

Operations With Sheep or Lambs – Utah: 2002, 2007 & 2012

Sheep and Lambs	2002	2007	2012
	(Number)	(Number)	(Number)
1 - 24 Head.....	842	1,037	1,196
25 - 99 Head.....	313	354	372
100 - 299 Head.....	127	109	79
300 - 999 Head.....	63	48	29
1,000 Head or More	77	67	79

Data Source: U.S. Census of Agriculture

Operations With Hogs & Pigs – Utah 2002, 2007 & 2012

Hogs & Pigs	2002	2007	2012
	(Number)	(Number)	(Number)
All Operations.....	518	611	669

Data Source: U.S. Census of Agriculture

Cattle & Calves: Number by Class & Calf Crop – Utah: January 1, 2013-2017

Class	2013	2014	2015	2016	2017
	(Head)	(Head)	(Head)	(Head)	(Head)
All Cattle & Calves	790,000	810,000	780,000	840,000	820,000
Cows & Heifers, That Have Calved	460,000	435,000	420,000	420,000	430,000
Beef Cows	365,000	340,000	324,000	325,000	338,000
Milk Cows	95,000	95,000	96,000	95,000	92,000
Calves, Under 500 Pounds	85,000	82,000	70,000	85,000	83,000
Steers, 500 Pounds & Over	70,000	85,000	78,000	90,000	80,000
Heifers, 500 Pounds & Over					
Beef Cow Replacements	60,000	70,000	78,000	95,000	85,000
Milk Cow Replacements	50,000	46,000	48,000	50,000	55,000
Other Heifers	45,000	69,000	64,000	75,000	60,000
Bulls, 500 Pounds & Over	20,000	23,000	22,000	25,000	27,000
Cattle on Feed	26,000	26,000	24,000	27,000	20,000
Calf Crop	380,000	385,000	390,000	380,000	(1)
Unit	Value of Inventory ^{2, 3}				
Value per Head	(Dollars) 1,200	1,350	1,750	1,490	1,180
Value of Inventory	(1,000 Dollars) 948,000	1,093,500	1,365,000	1,251,600	967,600

¹ Data available 2018

² Value of all cattle & calves.

³ 2013 revised.

Cattle & Calves: Balance Sheet – Utah: 2012-2016

Inventory Additions & Removals	2012	2013	2014	2015	2016
	(Head)	(Head)	(Head)	(Head)	(Head)
Inventory Beginning of Year	820,000	790,000	810,000	780,000	840,000
Calf Crop	385,000	380,000	385,000	390,000	380,000
In-Shipments	50,000	175,000	191,000	177,000	120,000
Marketings ¹					
Cattle	380,000	446,000	525,000	435,500	446,500
Calves	45,000	51,000	45,000	36,000	36,000
Farm Slaughter Cattle & Calves ²	2,000	1,000	2,000	1,500	1,500
Deaths					
Cattle	13,000	14,000	14,000	13,000	13,000
Calves	25,000	23,000	20,000	21,000	23,000
Inventory End of Year	790,000	810,000	780,000	840,000	820,000

¹ Includes custom slaughter for use on farms where produced & State out-shipments, but excludes inter-farm sales within the State.

² Excludes custom slaughter at commercial establishments.

Cattle & Calves: Production, Marketings & Income – Utah: 2012-2016

Unit	2012	2013	2014	2015	2016
Production ¹	(1,000 Lbs) 258,655	313,535	328,000	319,495	320,640
Marketings ²	(1,000 Lbs) 325,100	460,000	533,200	441,500	452,350
Value of Production	(1,000 Dollars) 302,585	374,285	482,669	454,189	357,901
Value of Sales ³	(1,000 Dollars) 383,545	554,600	795,236	628,075	515,192
Value of Home Consumption	(1,000 Dollars) 8,882	9,121	11,447	9,066	7,376
Gross Income	(1,000 Dollars) 392,427	563,721	806,683	637,141	522,568

¹ Includes custom slaughter for use on farms where produced & state out-shipments, but excludes inter-farm sales within the state.

² Excludes custom slaughter at commercial establishments. Production & marketings are live weight in pounds.

³ Excludes inter-farm in-state sales.

Dairy: Milk Production & Milkfat – Utah: 2012-2016

Unit	2012	2013	2014	2015	2016
Number of Milk Cows on Farms ¹ (1,000 Hd)	95,000	95,000	96,000	95,000	92,000
Production of Milk & Milkfat ²					
Milk per Cow					
Milk..... (Pounds)	22,863	22,432	22,989	23,125	22,772
Milkfat..... (Pounds)	844	843	855	863	865
Total					
Percentage Milkfat..... (Percent)	3.69	3.76	3.72	3.73	3.80
Milk..... (Million Pounds)	2,172	2,131	2,184	2,220	2,095
Milkfat..... (Million Pounds)	80	80	81	83	80
Milk Price (Dollars/100 Pounds)	17.60	19.50	23.70	17.00	16.00
Value of Production (1,000 Dollars)	382,272	415,545	517,608	377,400	335,200

¹ As of January 1, of the following year.

² Milk sold to plants & dealers as whole milk & equivalent amounts of milk for cream. Includes milk produced by dealers' own herds & small amounts sold directly to consumers. Includes milk produced by institutional herds. Excludes milk sucked by calves.

Milk & Cream: Marketings, Used on Farm, Income, & Value – Utah: 2012-2016

Unit	2012	2013	2014	2015	2016
Combined Marketings of Milk & Cream					
Milk Sold (Million Pounds)	2,159	2,118	2,171	2,207	2,081
Average Price					
Per 100 Pounds of Milk ¹ (Dollars)	17.60	19.50	23.70	17.00	16.00
Per Pound of Milkfat (Dollars)	4.77	5.19	6.37	4.56	4.21
Value of Milk Marketings..... (1,000 Dollars)	379,984	413,010	514,527	375,190	332,960
Used for Milk, Cream & Butter by Producers					
Milk Utilized..... (Million Pounds)	1.00	1.00	1.00	1.00	1.00
Value..... (Dollars)	176,000	195,000	237,000	170,000	160,000
Milk Used on Farm for Feed (Million Pounds)	12.00	12.00	12.00	12.00	13.00
Gross Producer Income ² (1,000 Dollars)	380,160	413,205	514,764	375,360	333,120
Value of Milk Produced ³ (1,000 Dollars)	382,272	415,545	517,608	377,400	335,200

¹ Average price for marketing year.

² Cash receipts from marketings of milk & cream, plus value of milk used for home consumption.

³ Includes value of milk fed to calves.

Manufactured Dairy Products – Utah: 2012-2016

Unit	2012	2013	2014	2015	2016
Low Fat Cottage Cheese Prod. ¹ (1,000 Pounds)	5,395	3,945	5,094	(D)	(D)
Sour Cream Production (1,000 Pounds)	13,595	12,550	(D)	(D)	(D)

¹ Fat content less than 4.0 percent.

(D) Withheld to avoid disclosing data for individual operations.

Milk Cows: Production by Month – Utah: 2014-2016 ¹

Year & Month	Milk Cows ²	Milk per Cow ³	Milk Production ³	Year & Month	Milk Cows ²	Milk per Cow ³	Milk Production ³
	(1,000 Head)	(Pounds)	(Million Pounds)		(1,000 Head)	(Pounds)	(Million Pounds)
2014							
January	95	1,840	175	August	95	2,010	191
February	95	1,685	160	September ..	95	1,890	180
March	95	1,905	181	October	95	1,920	182
April	95	1,895	180	November ..	95	1,820	173
May	95	1,990	189	December ..	95	1,875	178
June	95	1,945	185				
July	95	2,000	190	Annual Total...	95	23,125	2,220
August	96	1,990	191				
September ..	96	1,885	181	2016			
October	96	1,925	185	January	94	1,845	173
November ...	96	1,865	179	February	93	1,715	159
December ...	96	1,960	188	March	92	1,915	176
				April	92	1,885	173
Annual Total	96	22,989	2,184	May	91	1,990	181
				June	91	1,970	179
2015				July	90	1,970	177
January	96	1,965	189	August	90	1,960	176
February	96	1,770	170	September ..	91	1,900	173
March	96	1,990	191	October	91	1,955	178
April	96	1,950	187	November ..	92	1,875	173
May	96	2,030	195	December ..	92	1,920	177
June	96	1,990	191				
July	96	2,010	193	Annual Total...	92	22,772	2,095

¹ Annual totals as of January 1, the following year

² Includes dry cows; excludes heifers not yet fresh.

³ Excludes milk sucked by calves.

Commercial Cattle Slaughter – Utah: Monthly 2015-2016

Month	Number Slaughtered		Total Live Weight		Average Live Weight	
	2015	2016	2015	2016	2015	2016
	(Head)	(Head)	(1,000 Pounds)	(1,000 Pounds)	(Pounds)	(Pounds)
January	46,500	42,700	62,841	59,943	1,352	1,406
February	41,800	44,600	56,947	61,957	1,364	1,391
March	44,600	48,700	61,097	67,504	1,372	1,391
April	46,500	46,900	62,939	64,359	1,355	1,375
May	42,800	43,300	56,442	58,209	1,319	1,349
June	45,700	50,100	60,873	68,148	1,335	1,364
July	48,000	47,100	64,931	64,936	1,355	1,381
August	45,500	53,200	63,307	72,995	1,394	1,377
September	46,500	51,800	64,722	71,499	1,395	1,385
October	46,500	52,900	64,833	73,192	1,399	1,386
November	42,100	49,900	58,236	68,708	1,387	1,381
December	46,900	46,100	65,906	63,644	1,411	1,383
Annual Total ¹	543,300	577,300	743,073	795,093	1,370	1,381

¹ Totals may not add due to rounding.

Hogs & Pigs: Total Breeding & Market Inventory, Farrowings, Pigs per Litter, Pig Crop, & Marketings – Utah: December 1, 2007-2016

[Farrowings, Pigs per Litter, Pig Crop & Marketings for the Year, December 1, previous year, through November 30.]

Year	Inventory			Sows Farrowing	Pigs per Litter	Pig Crop	Marketings ¹
	Total	Breeding	Market				
	(1,000 Head)	(1,000 Head)	(1,000 Head)	(1,000 Head)	(Head)	(1,000 Head)	(1,000 Head)
2007	790	100	690	160	9.78	1,565.00	1,348.0
2008	740	75	665	163	9.90	1,614.00	1,527.0
2009	730	75	655	167	9.85	1,645.00	1,554.0
2010	740	80	660	164	10.04	1,647.00	1,549.0
2011	760	80	680	163	10.17	1,658.00	1,549.0
2012	740	80	660	163	10.18	1,660.00	1,593.0
2013	700	75	625	167	10.07	1,682.00	1,616.5
2014	610	75	535	162	9.44	1,529.00	1,468.5
2015	680	75	605	158	9.44	1,491.00	1,239.5
2016	700	75	625	157	9.15	1,437.00	1,211.5

¹ Includes custom slaughter for use on farms where produced and state outshipments, but excludes interfarm sales within the state.

Hogs & Pigs: Balance Sheet – Utah: 2012-2016

Inventory Additions & Removals	2012	2013	2014	2015	2016
	(Head)	(Head)	(Head)	(Head)	(Head)
Inventory Beginning of Year ¹	760,000	740,000	700,000	610,000	680,000
Annual Pig Crop ²	1,660,000	1,682,000	1,529,000	1,491,000	1,437,000
Inshipments.....	1,000	1,000	1,000	3,000	1,000
Marketings ³	1,593,000	1,616,500	1,468,500	1,239,500	1,211,500
Farm Slaughter ⁴	1,000	500	500	500	500
Deaths.....	87,000	106,000	151,000	184,000	206,000
Inventory End of Year ⁵	740,000	700,000	610,000	680,000	700,000

¹ Hogs & pigs inventory is as of December 1, previous year.

² From November 30, previous year to December 1.

³ Includes custom slaughter for use on farm where produced, state out-shipments, but excludes inter-farm sales within the state.

⁴ Excludes custom slaughter for farmers at commercial establishments.

⁵ Hogs & pigs inventory is as of December 1.

Market Hogs & Pigs: Inventory by Weight Group – Utah: December 1, 2007-2016

Year	Under 50 Pounds ¹	50-119 Pounds ¹	120-179 Pounds	180 Pounds & Over	Total Market Hogs
	(1,000 Head)	(1,000 Head)	(1,000 Head)	(1,000 Head)	(1,000 Head)
2007	275	148	142	125	690
2008	235	170	140	120	665
2009	260	135	130	130	655
2010	260	135	130	135	660
2011	280	130	130	140	680
2012	275	130	125	130	660
2013	265	115	120	125	625
2014	220	110	110	95	535
2015	245	115	125	120	605
2016	250	120	130	125	625

¹ First two weight groups "under 60 pounds" and "60 - 119 pounds" before 2008.

Hogs & Pigs: Production, Marketings & Income – Utah: 2007-2016

[Dollar values based on data received from U. S. Department of Agriculture's Agricultural Marketing Service]

Year	Production ¹	Marketings ²	Value of Production ³	Cash Receipts ^{3 4}	Value of Home Consumption	Gross Income
	(1,000 Pounds)	(1,000 Pounds)	(1,000 Dollars)	(1,000 Dollars)	(1,000 Dollars)	(1,000 Dollars)
2007.....	301,090	282,870	152,190	143,698	244	143,942
2008.....	312,262	320,460	163,240	167,601	251	167,852
2009.....	324,227	326,130	153,912	154,912	228	155,140
2010.....	303,829	301,380	184,623	183,232	291	183,523
2011.....	302,804	301,380	209,304	208,266	332	208,598
2012.....	283,570	286,488	192,252	194,200	245	194,445
2013.....	287,097	292,010	210,555	213,969	167	214,136
2014.....	265,717	275,755	229,904	238,181	198	238,379
2015.....	251,338	242,503	159,632	154,328	145	154,473
2016.....	239,149	236,617	142,295	140,876	134	141,010

¹ Adjustments made for changes in inventory and for inshipments.

² Excludes custom slaughter for use on farms where produced and interfarm sales within the State.

³ Includes allowance for higher average price of State inshipments and outshipments of feeder pigs.

⁴ Receipts from marketings and sale of farm slaughter.

Commercial Hog Slaughter – Utah: Monthly 2015-2016

Month	Number Slaughtered		Total Live Weight		Average Live Weight	
	2015	2016	2015	2016	2015	2016
			(1,000 Pounds)	(1,000 Pounds)	(Pounds)	(Pounds)
January.....	3,500	5,100	573	927	163	180
February.....	3,500	3,800	540	702	155	187
March.....	3,700	4,500	642	817	175	183
April.....	4,500	3,700	680	719	151	193
May.....	3,800	3,800	661	694	175	184
June.....	3,500	4,900	581	905	165	183
July.....	3,800	4,200	630	705	164	170
August.....	4,600	5,700	1,017	1,099	222	192
September.....	4,500	5,300	898	939	198	179
October.....	4,900	5,100	871	873	179	171
November.....	4,600	4,200	825	753	181	178
December.....	5,800	4,200	857	786	147	188
Annual Total.....	50,700	54,400	8,777	9,919	173	182

Sheep & Lambs: Inventory by Class & Lamb Crop – Utah: January 1, 2013-2017

Class	2013	2014	2015	2016	2017
	(Head)	(Head)	(Head)	(Head)	(Head)
All Sheep & Lambs ¹	295,000	280,000	290,000	285,000	275,000
Sheep & Lambs Kept for Breeding					
All Breeding Sheep & Lambs	275,000	260,000	270,000	265,000	255,000
Ewes	225,000	215,000	220,000	215,000	205,000
Rams.....	9,000	8,000	10,000	8,000	8,000
Replacement Lambs	41,000	37,000	40,000	42,000	42,000
Market Sheep & Lambs					
Total Market Sheep & Lambs.....	20,000	20,000	20,000	20,000	20,000
Market Sheep.....	2,000	2,000	2,000	1,000	1,000
Market Lambs	18,000	18,000	18,000	19,000	19,000
Market Lambs by Size Group					
Under 65 Pounds	1,000	1,000	2,000	2,000	3,000
65 - 84 Pounds.....	2,000	2,000	2,000	3,000	3,000
85 - 105 Pounds.....	5,000	7,000	5,000	7,000	5,000
Over 105 Pounds	10,000	8,000	9,000	7,000	8,000
Deaths					
Sheep.....	13,000	11,000	10,000	11,000	(2)
Lambs	18,000	16,000	15,000	15,000	(2)
Units	Lamb Crop & Value of Inventory				
Lamb Crop ³	(Head) 225,000	235,000	230,000	230,000	
Lambing Rate ⁴	(Lambs/100 Ewes) 100	109	105	107	(2)
Value per Head ⁵	(Dollars) 205	185	234	223	221

¹ All sheep includes new crop lambs. New crop lambs are lambs born after September 30, the previous year.

² Data available 2018

³ Total for the year. Lamb crop defined as lambs marked, docked or branded.

⁴ Not strictly a lambing rate. Represents lamb crop expressed as a percent of ewes 1 year old & older on hand at the beginning of the year.

⁵ Average value of all sheep, including lambs, at the beginning of the year.

Wool: Production & Value – Utah: 2012-2016

Units	2012	2013	2014	2015	2016
Sheep & Lambs Shorn ¹	(Head) 280,000	240,000	245,000	255,000	245,000
Weight per Fleece.....	(Pounds) 8.9	9.2	9.2	9.4	9.4
Shorn Wool Production	(1,000 Pounds) 2,500	2,200	2,260	2,390	2,300
Average Price per Pound.....	(Dollars) 1.60	1.60	1.80	1.70	1.80
Value.....	(1,000 Dollars) 4,000	3,520	4,068	4,063	4,140

¹ Includes shearing at commercial feeding yards.

Sheep & Lamb: Lamb Crop, Farm Slaughter & Death Loss – Utah: 2008-2017

Year	Ewes 1 Year & Older January 1	Lambs per 100 Ewes January 1	Lamb Crop ¹	Farm Slaughter ²	Deaths	
					Sheep	Lambs
	(1,000 Head)	(Number)	(1,000 Head)	(1,000 Head)	(1,000 Head)	(1,000 Head)
2008.....	210.0	110	230	4.0	12.0	16.0
2009.....	220.0	105	230	4.0	13.5	16.0
2010.....	215.0	102	220	6.0	12.0	15.0
2011.....	210.0	112	235	6.0	12.0	15.0
2012.....	230.0	102	235	6.0	13.0	18.0
2013.....	225.0	100	225	6.1	13.0	18.0
2014.....	215.0	109	235	6.1	11.0	16.0
2015.....	220.0	105	230	6.2	10.0	15.0
2016.....	215.0	107	230	6.1	11.0	15.0
2017.....	205.0	(3)	(3)	(3)	(3)	(3)

¹ Lamb crop is defined as lambs born in the eastern states & lambs docked or branded in the western states.

² Excludes custom slaughter for farmers at commercial establishments.

³ Data not available until January, 2018.

Losses of Lambs Before Docking, by Cause: Utah, 2011-2016

Cause of Loss	2011	2012	2013	2014	2015	2016
Number of Head	Head					
Bear	300	200	200	100	100	100
Bobcat	(D)	200	200	200	200	300
Coyote	4,700	5,000	5,800	5,200	5,000	5,500
Dog	300	500	300	100	100	200
Mountain Lion	300	200	500	500	500	500
Foxes	(D)	100	200	400	400	500
Wolves	(D)	(D)	(D)	(D)	(D)	(D)
Eagles	600	600	400	700	700	700
Ravens	(D)	100	100	300	200	300
Other/Unknown ¹	1,600	1,400	200	100	100	200
Total Predators	7,800	8,300	7,900	7,600	7,300	8,300
Diseases	(D)	800	700	1,100	1,100	900
Enterotoxaemia	(D)	100	200	200	200	300
Weather Conditions	5,600	4,000	2,800	2,700	2,500	2,600
Lambing Complications	1,900	2,200	1,300	1,900	1,800	2,400
Old Age	NA	NA	NA	NA	NA	NA
On Back	(D)	100	(D)	(D)	(D)	(D)
Poison	(D)	300	100	100	100	100
Theft	(D)	100	(D)	(D)	(D)	(D)
Other/Unknown ¹	2,700	2,100	1,500	2,900	3,000	2,400
Total Non-Predators	10,200	9,700	6,600	8,900	8,700	8,700
Total Losses	18,000	18,000	14,500	16,500	16,000	17,000

Foot notes at bottom of page.

Losses of Lambs After Docking, by Cause: Utah, 2011-2016

Cause of Loss	2011	2012	2013	2014	2015	2016
Number of Head	Head					
Bear	1,000	1,800	1,700	1,700	1,700	1,300
Bobcat	(D)	500	100	200	200	300
Coyote	6,900	8,500	9,400	8,500	7,800	7,000
Dog	700	200	500	200	200	300
Mountain Lion	1,100	1,800	1,700	900	800	2,400
Foxes	(D)	100	(D)	200	200	200
Wolves	(D)	100	(D)	(D)	(D)	100
Eagles	200	100	300	100	100	100
Ravens	(D)	100	(D)	(D)	(D)	(D)
Other/Unknown ¹	1,100	800	400	300	100	200
Total Predators	11,000	14,000	14,100	12,100	11,100	11,900
Diseases	400	400	600	100	100	300
Enterotoxaemia	(D)	200	100	200	200	500
Weather Conditions	900	700	600	400	400	400
Lambing Complications	NA	NA	NA	NA	NA	NA
Old Age	NA	NA	NA	NA	NA	NA
On Back	(D)	100	(D)	(D)	(D)	(D)
Poison	500	600	100	300	300	300
Theft	(D)	100	300	100	100	(D)
Other/Unknown ¹	2,200	1,900	2,200	2,800	2,800	1,600
Total Non-Predators	4,000	4,000	3,900	3,900	3,900	3,100
Total Losses	15,000	18,000	18,000	16,000	15,000	15,000

(D) indicates Un-published: i.e. less than 100 head.

¹ Other/Unknown includes Other and Unknown causes combined with Un-published causes.

Totals may not add due to rounding.

Losses of Sheep and Lambs Combined, by Cause: Utah, 2011-2016¹

Cause of Loss	2011	2012	2013	2014	2015	2016
Number of Head	Head					
Bear	1,800	2,800	2,700	2,900	2,800	2,500
Bobcat	(D)	800	300	500	500	600
Coyote	13,700	16,500	18,400	16,500	15,200	14,900
Dog	1,400	1,300	1,200	500	500	800
Mountain Lion	2,100	2,500	2,900	2,100	2,000	4,000
Foxes	(D)	200	200	700	600	700
Wolves	(D)	100	(D)	(D)	(D)	100
Eagles	800	700	700	800	800	800
Ravens	(D)	200	100	300	200	300
Other/Unknown ²	3,400	2,500	900	600	400	500
Total Predators	23,200	27,600	27,400	24,900	23,000	25,200
Diseases	1,500	1,700	2,100	1,500	1,500	1,700
Enterotoxaemia	500	700	500	500	500	1,100
Weather Conditions	8,000	5,200	5,100	3,300	3,100	3,400
Lambing Complications	2,400	3,100	1,900	2,800	2,600	3,300
Old Age	1,800	2,900	1,700	1,500	1,400	1,600
On Back	(D)	500	(D)	100	100	100
Poison	1,300	1,400	900	1,300	1,200	1,400
Theft	(D)	300	300	100	100	100
Other/Unknown ²	6,300	5,600	5,600	7,500	7,500	5,100
Total Non-Predators	21,800	21,400	18,100	18,600	18,000	17,800
Total Losses	45,000	49,000	45,500	43,500	41,000	43,000
Percent of Total by Cause	Percent					
Bear	4.0	5.7	5.9	6.7	6.8	5.8
Bobcat	(D)	1.6	0.7	1.1	1.2	1.4
Coyote	30.4	33.7	40.4	37.9	37.1	34.7
Dog	3.1	2.7	2.6	1.1	1.2	1.9
Mountain Lion	4.7	5.1	6.4	4.8	4.9	9.3
Foxes	(D)	0.4	0.4	1.6	1.5	1.6
Wolves	(D)	0.2	(D)	(D)	(D)	0.2
Eagles	1.8	1.4	1.5	1.8	2.0	1.9
Ravens	(D)	0.4	0.2	0.7	0.5	0.7
Other/Unknown ²	7.6	5.1	2.0	1.4	1.0	1.2
Total Predators	51.6	56.3	60.2	57.2	56.1	58.6
Diseases	3.3	3.5	4.6	3.4	3.7	4.0
Enterotoxaemia	1.1	1.4	1.1	1.1	1.2	2.6
Weather Conditions	17.8	10.6	11.2	7.6	7.6	7.9
Lambing Complications	5.3	6.3	4.2	6.4	6.3	7.7
Old Age	4.0	5.9	3.7	3.4	3.4	3.7
On Back	(D)	1.0	(D)	0.2	0.2	0.2
Poison	2.9	2.9	2.0	3.0	2.9	3.3
Theft	(D)	0.6	0.7	0.2	0.2	0.2
Other/Unknown ²	14.0	11.4	12.3	17.2	18.3	11.9
Total Non-Predators	48.4	43.7	39.8	42.8	43.9	41.4
Total Losses	100.0	100.0	100.0	100.0	100.0	100.0
Dollar Value of Losses by Cause	1,000 dollars					
Bear	335	491	434	538	547	461
Bobcat	(D)	133	47	91	94	98
Coyote	2,438	2,790	2,925	2,988	2,838	2,541
Dog	261	242	194	93	99	145
Mountain Lion	398	426	464	388	390	705
Foxes	(D)	32	31	126	108	114
Wolves	(D)	16	(D)	(D)	(D)	16
Eagles	134	111	109	142	144	130
Ravens	(D)	32	16	53	36	49
Other/Unknown ²	635	414	146	111	81	86
Total Predators	4,201	4,687	4,366	4,529	4,336	4,346
Diseases	323	300	341	273	283	301
Enterotoxaemia	97	135	82	91	94	194
Weather Conditions	1,442	853	824	590	567	573
Lambing Complications	436	545	307	516	502	581
Old Age	419	635	294	298	312	340
On Back	(D)	98	(D)	20	22	21
Poison	270	252	152	250	250	278
Theft	(D)	54	47	18	18	21
Other/Unknown ²	1,181	982	906	1,369	1,422	884
Total Non-Predators	4,168	3,854	2,953	3,424	3,470	3,193
Total Losses	8,369	8,541	7,319	7,953	7,805	7,538

(D) indicates Un-published: i.e. less than 100 head.

¹ Lamb losses include both before and after docking losses.

² Other/Unknown includes Other and Unknown causes combined with Un-published causes.

Totals may not add due to rounding.

Losses of Sheep, by Cause: Utah, 2011-2016

Cause of Loss	2011	2012	2013	2014	2015	2016
Number of Head	Head					
Bear	500	800	800	1,100	1,000	1,100
Bobcat	(D)	100	(D)	100	100	(D)
Coyote	2,100	3,000	3,200	2,800	2,400	2,400
Dog	400	600	400	200	200	300
Mountain Lion	700	500	700	700	700	1,100
Foxes	(D)	(D)	(D)	100	(D)	(D)
Wolves	(D)	(D)	(D)	(D)	(D)	(D)
Eagles	(D)	(D)	(D)	(D)	(D)	(D)
Ravens	(D)	(D)	(D)	(D)	(D)	(D)
Other/Unknown ¹	700	300	300	200	200	100
Total Predators	4,400	5,300	5,400	5,200	4,600	5,000
Diseases	1,100	500	800	300	300	500
Enterotoxaemia	(D)	400	200	100	100	300
Weather Conditions	1,500	500	1,700	200	200	400
Lambing Complications	500	900	600	900	800	900
Old Age	1,800	2,900	1,700	1,500	1,400	1,600
On Back	(D)	300	(D)	100	100	100
Poison	800	500	700	900	800	1,000
Theft	(D)	100	(D)	(D)	(D)	100
Other/Unknown ¹	1,900	1,600	1,900	1,800	1,700	1,100
Total Non-Predators	7,600	7,700	7,600	5,800	5,400	6,000
Total Losses	12,000	13,000	13,000	11,000	10,000	11,000
Percent of Total by Cause	Percent					
Bear	4.2	6.2	6.2	10.0	10.0	10.0
Bobcat	(D)	0.8	(D)	0.9	1.0	(D)
Coyote	17.5	23.1	24.6	25.5	24.0	21.8
Dog	3.3	4.6	3.1	1.8	2.0	2.7
Mountain Lion	5.8	3.8	5.4	6.4	7.0	10.0
Foxes	(D)	(D)	(D)	0.9	(D)	(D)
Wolves	(D)	(D)	(D)	(D)	(D)	(D)
Eagles	(D)	(D)	(D)	(D)	(D)	(D)
Ravens	(D)	(D)	(D)	(D)	(D)	(D)
Other/Unknown ¹	5.8	2.3	2.3	1.8	2.0	0.9
Total Predators	36.7	40.8	41.5	47.3	46.0	45.5
Diseases	9.2	3.8	6.2	2.7	3.0	4.6
Enterotoxaemia	(D)	3.1	1.5	0.9	1.0	2.7
Weather Conditions	12.5	3.8	13.1	1.8	2.0	3.6
Lambing Complications	4.2	6.9	4.6	8.2	8.0	8.2
Old Age	15.0	22.3	13.1	13.6	14.0	14.6
On Back	(D)	2.3	(D)	0.9	1.0	0.9
Poison	6.7	3.8	5.4	8.2	8.0	9.1
Theft	(D)	0.8	(D)	(D)	(D)	0.9
Other/Unknown ¹	15.8	12.3	14.6	16.4	17.0	10.0
Total Non-Predators	63.3	59.2	58.5	52.7	54.0	54.5
Total Losses	100.0	100.0	100.0	100.0	100.0	100.0
Dollar Value of Losses by Cause	1,000 dollars					
Bear	117	175	138	218	223	234
Bobcat	(D)	22	(D)	20	22	(D)
Coyote	489	657	554	556	534	510
Dog	94	131	69	40	45	64
Mountain Lion	163	110	121	139	156	234
Foxes	(D)	(D)	(D)	20	(D)	(D)
Wolves	(D)	(D)	(D)	(D)	(D)	(D)
Eagles	(D)	(D)	(D)	(D)	(D)	(D)
Ravens	(D)	(D)	(D)	(D)	(D)	(D)
Other/Unknown ¹	175	66	52	40	45	21
Total Predators	1,038	1,161	934	1,032	1,024	1,063
Diseases	256	110	138	60	67	106
Enterotoxaemia	(D)	88	35	20	22	64
Weather Conditions	350	110	294	40	45	85
Lambing Complications	117	197	104	179	178	191
Old Age	419	635	294	298	312	340
On Back	(D)	66	(D)	20	22	21
Poison	186	110	121	179	178	213
Theft	(D)	22	(D)	(D)	(D)	21
Other/Unknown ¹	452	350	329	357	378	234
Total Non-Predators	1,780	1,688	1,315	1,152	1,202	1,275
Total Losses	2,818	2,849	2,249	2,184	2,225	2,338

(D) indicates Un-published: i.e. less than 100 head.

¹ Other/Unknown includes Other and Unknown causes combined with Un-published causes.

Totals may not add due to rounding.

Losses of All Lambs, by Cause: Utah, 2011-2016 ¹

Cause of Loss	2011	2012	2013	2014	2015	2016
Number of Head	Head					
Bear	1,300	2,000	1,900	1,800	1,800	1,400
Bobcat	(D)	700	300	400	400	600
Coyote	11,600	13,500	15,200	13,700	12,800	12,500
Dog	1,000	700	800	300	300	500
Mountain Lion	1,400	2,000	2,200	1,400	1,300	2,900
Foxes	(D)	200	200	600	600	700
Wolves	(D)	100	(D)	(D)	(D)	100
Eagles	800	700	700	800	800	800
Ravens	(D)	200	100	300	200	300
Other/Unknown ²	2,700	2,200	600	400	200	400
Total Predators	18,800	22,300	22,000	19,700	18,400	20,200
Diseases	400	1,200	1,300	1,200	1,200	1,200
Enterotoxaemia	(D)	300	300	400	400	800
Weather Conditions	6,500	4,700	3,400	3,100	2,900	3,000
Lambing Complications	1,900	2,200	1,300	1,900	1,800	2,400
Old Age	NA	NA	NA	NA	NA	NA
On Back	(D)	200	(D)	(D)	(D)	(D)
Poison	500	900	200	400	400	400
Theft	(D)	200	300	100	100	(D)
Other/Unknown ²	4,900	4,000	3,700	5,700	5,800	4,000
Total Non-Predators	14,200	13,700	10,500	12,800	12,600	11,800
Total Losses	33,000	36,000	32,500	32,500	31,000	32,000
Percent of Total by Cause	Percent					
Bear	3.9	5.6	5.8	5.5	5.8	4.4
Bobcat	(D)	1.9	0.9	1.2	1.3	1.9
Coyote	35.2	37.5	46.8	42.2	41.3	39.1
Dog	3.0	1.9	2.5	0.9	1.0	1.6
Mountain Lion	4.2	5.6	6.8	4.8	4.2	9.1
Foxes	(D)	0.6	0.6	1.8	1.9	2.2
Wolves	(D)	0.3	(D)	(D)	(D)	0.3
Eagles	2.4	1.9	2.2	2.5	2.6	2.5
Ravens	(D)	0.6	0.3	0.9	0.7	0.9
Other/Unknown ²	8.2	6.1	1.8	1.2	0.7	1.3
Total Predators	57.0	61.9	67.7	60.6	59.4	63.1
Diseases	1.2	3.3	4.0	3.7	3.9	3.8
Enterotoxaemia	(D)	0.8	0.9	1.2	1.3	2.5
Weather Conditions	19.7	13.1	10.5	9.5	9.4	9.4
Lambing Complications	5.8	6.1	4.0	5.8	5.8	7.5
Old Age	NA	NA	NA	NA	NA	NA
On Back	(D)	0.6	(D)	(D)	(D)	(D)
Poison	1.5	2.5	0.6	1.2	1.3	1.3
Theft	(D)	0.6	0.9	0.3	0.3	(D)
Other/Unknown ²	14.8	11.1	11.4	17.5	18.7	12.5
Total Non-Predators	43.0	38.1	32.3	39.4	40.6	36.9
Total Losses	100.0	100.0	100.0	100.0	100.0	100.0
Dollar Value of Losses by Cause	1,000 dollars					
Bear	218	316	296	320	324	228
Bobcat	(D)	111	47	71	72	98
Coyote	1,949	2,133	2,371	2,432	2,304	2,031
Dog	168	111	125	53	54	81
Mountain Lion	235	316	343	249	234	471
Foxes	(D)	32	31	107	108	114
Wolves	(D)	16	(D)	(D)	(D)	16
Eagles	134	111	109	142	144	130
Ravens	(D)	32	16	53	36	49
Other/Unknown ²	459	348	94	71	36	65
Total Predators	3,163	3,526	3,432	3,497	3,312	3,283
Diseases	67	190	203	213	216	195
Enterotoxaemia	(D)	47	47	71	72	130
Weather Conditions	1,092	743	530	550	522	488
Lambing Complications	319	348	203	337	324	390
Old Age	NA	NA	NA	NA	NA	NA
On Back	(D)	32	(D)	(D)	(D)	(D)
Poison	84	142	31	71	72	65
Theft	(D)	32	47	18	18	(D)
Other/Unknown ²	826	632	577	1,012	1,044	650
Total Non-Predators	2,388	2,165	1,638	2,272	2,268	1,918
Total Losses	5,551	5,691	5,070	5,769	5,580	5,200

(D) indicates Un-published: i.e. less than 100 head.

¹ Lamb losses include both before and after docking losses.

² Other/Unknown includes Other and Unknown causes combined with Un-published causes.

Totals may not add due to rounding.

Layers & Eggs – Utah: 2012-2016

Unit	2012	2013	2014	2015	2016
Inventory, Production & Value ¹ 2012-2016					
Average Layers (1,000 Head)	3,648	3,793	4,168	4,409	4,571
Eggs per Layer ² (Number)	276	286	285	284	278
Total Egg Production (Million Eggs)	1,005	1,084	1,187	1,252	1,271
Value of Eggs Produced (1,000 Dollars)	72,537	81,139	107,255	199,491	73,238
Chicken Inventory ³ , & Value December 1, 2012-2016					
Total Layers (1,000 Head)	3,800	3,940	4,585	4,532	5,252
Total Pullets (1,000 Head)	812	761	923	1,328	1,370
Total Chickens					
Total (1,000 Head)	4,612	4,701	5,508	5,860	6,622
Value					
Average per Head (Dollars)	2.50	2.60	2.50	3.10	2.40
Total Value (1,000 Dollars)	11,530	12,223	13,770	18,166	15,893
Chickens: Lost, Sold & Value of Sales ⁴ 2012-2016					
Lost ⁵ (1,000 Head)	520	788	1,208	863	950
Sold for Slaughter					
Chickens Sold (1,000 Head)	1,869	2,281	1,593	2,484	3,003
Live Weight (1,000 Pounds)	5,981	7,299	5,098	7,949	9,910
Value of Sales (Dollars)	6,000	7,000	5,000	8,000	10,000

¹ Estimates cover the 12 month period, December 1, previous year, through November 30.

² Total egg production divided by average number of layers on hand.

³ Excludes commercial broilers.

⁴ Estimates exclude broilers and cover the 12 month period December 1, the previous year through November 30.

⁵ Includes rendered, died, destroyed, composted or disappeared for any reason except sold during the 12 month period.

Turkey: Production & Value – Utah: 2008-2016

Year	Production ¹	Production	Value of Production
	(1,000 Head)	(1,000 Pounds)	(1,000 Dollars)
2008.....	4,100	104,960	60,877
2009.....	3,200	81,600	40,800
2010.....	4,600	117,300	75,189
2011.....	4,300	105,350	71,849
2012.....	4,100	105,780	76,267
2013.....	4,000	108,800	72,352
2014.....	4,000	96,800	71,148
2015.....	3,800	95,380	77,353
2016.....	4,700	121,730	100,549

¹ Excludes young turkeys lost.

Mink: Pelts Produced, Females Bred, Average Price & Value – Utah & United States: 2007-2016

Year	Utah		United States			
	Pelts Produced	Females Bred	Pelts Produced	Females Bred	Average Marketing Price	Value of Pelts
	(1,000)	(1,000)			(Dollars)	(1,000 Dollars)
2007	600	155	2,828,200	696,100	65.70	185,813
2008	550	156	2,820,700	691,300	41.60	117,341
2009	614	157	2,866,700	674,200	65.10	186,622
2010	678	171	2,840,200	670,200	81.90	232,612
2011	699	169	3,091,470	706,000	94.30	291,526
2012	(1)	179	(1)	770,000	(1)	(1)
2013	855	(1)	3,544,610	(1)	56.30	199,562
2014	959	201	3,741,150	851,500	57.70	215,864
2015	934	214	3,682,960	848,700	32.00	117,855
2016	768	190	3,317,040	767,100	35.00	116,096

(NA) Not available.

¹ Due to sequestration the Mink report was suspended.

Pelts Produced in 2016 & Females Bred for 2017, by Type – Utah ¹ & United States:

Type	Pelts Produced 2016		Females Bred To Produce Kits 2017	
	Utah	United States	Utah	United States
	(Pelts)	(Pelts)	(Number)	(Number)
Black	260,000	1,685,450	65,000	369,930
Demi/Wild.....	(D)	62,110	6,500	14,170
Pastel	28,000	98,600	6,500	24,750
Sapphire	50,000	135,080	10,000	32,840
Blue Iris	1,900	226,130	510	44,620
Mahogany	295,000	711,320	65,000	155,730
Pearl.....	(D)	103,640	(D)	24,700
Lavender	(D)	32,310	(D)	9,290
Violet	(D)	54,550	(D)	12,350
White.....	(D)	199,570	(D)	50,760
Other	(D)	8,280	(D)	1,670
Total	768,010	3,317,040	178,030	740,810

(D) Withheld to avoid disclosing data for individual operations.

¹ Published color classes may not add to the State total to avoid disclosing individual operations.

Honey: Number of Colonies, Yield, Production, Stocks, Price, & Value – Utah: 2007-2016

[Producers with 5 or more colonies.]

Year	Honey Producing Colonies ¹	Yield per Colony	Production	Stocks December 15 ²	Average Price per Pound ³	Value of Production ⁴
	(1,000)	(Pounds)	(1,000 Pounds)	(1,000 Pounds)	(Dollars)	(1,000 Dollars)
2007.....	28	42.0	1,176	270	1.13	1,329
2008.....	28	48.0	1,344	242	1.57	2,110
2009.....	26	38.0	988	198	1.46	1,442
2010.....	26	30.0	780	195	1.53	1,193
2011.....	23	39.0	897	170	1.75	1,570
2012.....	25	38.0	950	209	1.87	1,777
2013.....	30	34.0	1,020	92	2.09	2,132
2014.....	29	28.0	812	130	2.13	1,730
2015.....	27	42.0	1,134	147	1.92	2,177
2016.....	31	32.0	992	169	1.91	1,895

¹ Honey producing colonies are the maximum number of colonies from which honey was taken during the year. It is possible to take honey from colonies which did not survive the entire year.

² Stocks held by producers.

³ Average price per pound based on expanded sales.

⁴ Value of production is equal to production multiplied by average price per pound.

Trout: Total Value of Fish Sold, & Foodsize Sales – Utah: 2007-2016

Year	Total Value of Fish Sold ¹	Foodsize (12 Inches or longer)			
		Number of Fish	Live Weight ²	Sales	
				Total ³	Average Price per Pound
	(Dollars)		(Pounds)	(Dollars)	(Dollars)
2007.....	436,000	101,000	111,000	350,000	3.15
2008.....	535,000	109,000	124,000	433,000	3.49
2009.....	529,000	99,000	106,000	333,000	3.14
2010.....	601,000	100,000	116,000	365,000	3.15
2011.....	516,000	75,000	87,000	307,000	3.53
2012.....	472,000	90,000	100,000	330,000	3.30
2013.....	617,000	100,000	151,000	556,000	3.68
2014.....	604,000	130,000	161,000	531,000	3.30
2015.....	630,000	90,000	113,000	444,000	3.93
2016.....	633,000	100,000	128,000	436,000	3.41

¹ Total sales excluding eggs.

² Due to rounding, total number of fish multiplied by the average pounds per unit may not exactly equal total live weight.

³ Due to rounding, total number or live weight multiplied by average value per unit may not exactly equal total sales.

Marketing Year Average Prices, by Commodity – Utah: 2008-2016

Commodity	Unit	2008	2009	2010	2011	2012	2013	2014	2015	2016
Wheat, All.....	Bu	7.97	5.92	7.43	8.26	9.59	7.94	7.07	5.18	4.30
Wheat, Winter ..	Bu	7.40	5.70	7.20	7.62	8.97	7.71	6.85	4.77	3.98
Wheat, Spring ..	Bu	11.30	8.69	9.27	10.90	11.50	8.66	8.58	7.00	5.50
Corn, Grain	Bu	4.40	4.52	5.75	6.97	7.59	5.47	4.13	4.68	3.80
Barley, All.....	Bu	4.41	2.56	3.43	5.53	5.87	4.17	3.13	2.97	2.36
Oats ²	Bu	3.20	2.50	3.60	4.35	4.40	4.42	3.75	3.61	(NA)
Hay, All (Baled) ..	Ton	167.00	102.00	106.00	185.00	189.00	182.00	188.00	162.00	127.00
Alfalfa	Ton	170.00	102.00	106.00	185.00	190.00	182.00	188.00	162.00	127.00
Other Hay.....	Ton	137.00	94.00	98.00	152.00	152.00	152.00	154.00	131.00	104.00
Apples, Cmrc1 ² ..	Lbs	0.29	0.30	0.25	0.22	0.26	0.48	0.22	0.33	(NA)
Peaches	Ton	868.00	1,040.00	691.00	1,010.00	1,080.00	1,080.00	981.00	1,080.00	1,640.00
Cherries,										
Tart.....	Lb	0.33	0.27	0.27	0.29	0.51	0.48	0.43	0.34	0.35
Sweet ²	Ton	2,440.00	1,680.00	1,330.00	1,470.00	1,450.00	2,490.00	1,500.00	854.00	(NA)
Apricots ²	ton	468.00	862.00	432.00	1,290.00	919.00	1,010.00	1,510.00	(D)	(NA)
Beef Cattle ¹	Cwt	90.50	80.00	96.00	(NA)	(NA)	(NA)	(NA)	(NA)	(NA)
Milk Cows.....	Hd	1,660.00	1,220.00	1,160.00	1,290.00	1,300.00	1,290.00	1,740.00	1,930.00	1,730.00
Calves ¹	Cwt	105.00	104.00	120.00	(NA)	(NA)	(NA)	(NA)	(NA)	(NA)
Steers & Heifers ¹	Cwt	94.00	83.00	99.00	(NA)	(NA)	(NA)	(NA)	(NA)	(NA)
Cows ¹	Cwt	43.00	42.00	54.00	(NA)	(NA)	(NA)	(NA)	(NA)	(NA)
Sheep ¹	Cwt	25.00	30.20	47.80	(NA)	(NA)	(NA)	(NA)	(NA)	(NA)
Lambs ¹	Cwt	102.00	99.90	126.00	(NA)	(NA)	(NA)	(NA)	(NA)	(NA)
Hogs ¹	Cwt	52.30	47.50	60.70	(NA)	(NA)	(NA)	(NA)	(NA)	(NA)
Honey.....	Lb	1.57	1.46	1.53	1.75	1.87	2.09	2.13	1.92	1.91
Trout 12 Inches+	Lb	(NA)	(NA)	3.15	3.53	3.30	3.68	3.30	3.93	3.41
Eggs.....	Doz	0.66	0.95	0.68	0.83	0.88	0.87	0.90	1.08	1.91
Milk, All.....	Cwt	18.10	12.20	16.20	19.60	17.60	19.50	23.70	17.00	16.00

(D) Withheld to avoid disclosing data for individual operations.

(NA) Not available.

¹ Livestock prices (excluding milk cows per head) discontinued 2011.

² No longer in the estimate program

Prices Received: Monthly Averages Selected Commodities – Utah: 2007-2016

Year	Jan	Feb	Mar	Apr	May	Jun	Jul	Aug	Sep	Oct	Nov	Dec
All Barley												
	(Dollars per Bu)	(Dollars per Bu)	(Dollars per Bu)	(Dollars per Bu)	(Dollars per Bu)	(Dollars per Bu)	(Dollars per Bu)	(Dollars per Bu)	(Dollars per Bu)	(Dollars per Bu)	(Dollars per Bu)	(Dollars per Bu)
2007.....	3.65	3.91	3.70	3.18	3.72	(S)	3.38	3.39	4.71	5.59	5.22	4.99
2008.....	6.03	(S)	4.76	(S)	(S)	(S)	(S)	4.56	4.45	4.07	(S)	(S)
2009.....	(S)	(S)	(S)	(S)	3.23	(S)	(S)	2.50	2.25	2.14	2.49	2.72
2010.....	2.89	3.03	2.95	2.91	2.97	3.21	2.66	2.88	3.05	3.11	3.73	4.35
2011.....	4.38	4.49	5.00	5.61	(D)	5.38	(D)	5.55	5.80	5.18	5.43	5.53
2012.....	(D)	5.19	(D)	5.22	(D)	5.15	5.79	5.96	5.91	5.80	5.95	(D)
2013.....	5.73	(D)	5.68	(D)	5.80	5.76	(D)	4.32	(D)	3.91	(S)	3.84
2014.....	(D)	3.88	4.08	4.11	4.08	5.18	3.87	3.55	(D)	(D)	(D)	(D)
2015.....	(D)	(D)	(D)	(D)	(D)	(D)	2.84	(D)	(D)	(D)	(D)	3.56
2016.....	3.48	(D)	(D)	(D)	(S)	(S)	(2)	(2)	(2)	(2)	(2)	(2)
Milk ¹												
	(Dollars per Cwt)	(Dollars per Cwt)	(Dollars per Cwt)	(Dollars per Cwt)	(Dollars per Cwt)	(Dollars per Cwt)	(Dollars per Cwt)	(Dollars per Cwt)	(Dollars per Cwt)	(Dollars per Cwt)	(Dollars per Cwt)	(Dollars per Cwt)
2007.....	(1)	(1)	(1)	(1)	(1)	(1)	(1)	(1)	(1)	(1)	(1)	(1)
2008.....	20.20	18.70	18.70	18.20	18.50	19.50	19.00	17.80	17.40	17.20	16.70	15.70
2009.....	12.70	10.80	10.90	11.20	10.70	10.90	10.60	11.60	12.40	14.30	14.70	16.00
2010.....	15.70	15.40	14.90	14.20	15.10	15.60	15.80	16.70	17.40	18.40	18.10	17.00
2011.....	16.80	18.40	20.10	19.60	19.50	20.50	20.40	21.30	20.60	19.10	19.50	19.00
2012.....	18.20	16.80	16.50	15.70	15.10	14.60	15.80	17.40	18.80	21.00	21.80	20.60
2013.....	19.90	19.10	18.60	18.80	19.20	19.10	18.20	18.50	19.50	20.50	21.20	21.50
2014.....	22.30	24.10	24.10	24.60	24.40	23.00	22.50	23.80	25.00	24.90	23.80	21.50
2015.....	17.80	16.50	16.40	16.40	16.70	16.90	16.70	16.70	17.00	17.40	18.40	17.80
2016.....	16.00	15.60	14.90	14.90	14.40	14.40	15.40	16.50	17.30	16.60	17.10	18.80

(D) Withheld to avoid disclosing data for individual operations.

(S) Insufficient number of reports to establish an estimate.

¹ Monthly milk price estimates began 2008.

² Estimates discontinued in 2016.

Prices Received: Monthly Averages Selected Commodities – Utah: 2007-2016 (cont)

Year	Jan	Feb	Mar	Apr	May	Jun	Jul	Aug	Sep	Oct	Nov	Dec
All Hay (Baled)												
	(Dollars per Ton)	(Dollars per Ton)	(Dollars per Ton)	(Dollars per Ton)	(Dollars per Ton)	(Dollars per Ton)	(Dollars per Ton)	(Dollars per Ton)	(Dollars per Ton)	(Dollars per Ton)	(Dollars per Ton)	(Dollars per Ton)
2007	99.00	104.00	104.00	109.00	119.00	129.00	126.00	129.00	131.00	131.00	133.00	138.00
2008	139.00	143.00	140.00	148.00	154.00	163.00	172.00	173.00	168.00	168.00	175.00	157.00
2009	149.00	145.00	144.00	130.00	135.00	105.00	100.00	105.00	105.00	100.00	105.00	100.00
2010	90.00	100.00	100.00	95.00	95.00	100.00	100.00	100.00	108.00	108.00	108.00	109.00
2011	109.00	110.00	120.00	159.00	161.00	173.00	199.00	183.00	181.00	200.00	187.00	191.00
2012	189.00	175.00	173.00	189.00	205.00	198.00	199.00	187.00	187.00	187.00	182.00	192.00
2013	183.00	184.00	175.00	182.00	190.00	190.00	194.00	186.00	186.00	175.00	170.00	170.00
2014	174.00	180.00	175.00	170.00	170.00	170.00	194.00	204.00	205.00	199.00	185.00	179.00
2015	180.00	180.00	170.00	175.00	175.00	175.00	165.00	159.00	160.00	160.00	160.00	160.00
2016	160.00	160.00	145.00	145.00	120.00	130.00	130.00	129.00	130.00	130.00	130.00	125.00
Alfalfa Hay (Baled)												
	(Dollars per Ton)	(Dollars per Ton)	(Dollars per Ton)	(Dollars per Ton)	(Dollars per Ton)	(Dollars per Ton)	(Dollars per Ton)	(Dollars per Ton)	(Dollars per Ton)	(Dollars per Ton)	(Dollars per Ton)	(Dollars per Ton)
2007	100.00	105.00	105.00	110.00	120.00	130.00	130.00	130.00	132.00	132.00	135.00	140.00
2008	145.00	145.00	145.00	150.00	155.00	165.00	175.00	175.00	170.00	172.00	180.00	162.00
2009	150.00	145.00	150.00	140.00	135.00	105.00	100.00	105.00	105.00	100.00	105.00	100.00
2010	90.00	100.00	100.00	95.00	95.00	100.00	100.00	100.00	108.00	108.00	108.00	109.00
2011	109.00	110.00	120.00	160.00	161.00	173.00	200.00	184.00	181.00	200.00	187.00	192.00
2012	189.00	175.00	173.00	189.00	205.00	198.00	200.00	188.00	187.00	187.00	182.00	192.00
2013	183.00	184.00	175.00	183.00	191.00	190.00	195.00	187.00	187.00	175.00	170.00	170.00
2014	175.00	180.00	175.00	170.00	170.00	170.00	195.00	205.00	205.00	200.00	185.00	180.00
2015	180.00	180.00	170.00	175.00	175.00	175.00	165.00	160.00	160.00	160.00	160.00	160.00
2016	160.00	160.00	145.00	145.00	120.00	130.00	130.00	130.00	130.00	130.00	130.00	125.00
All Other Hay (Baled)												
	(Dollars per Ton)	(Dollars per Ton)	(Dollars per Ton)	(Dollars per Ton)	(Dollars per Ton)	(Dollars per Ton)	(Dollars per Ton)	(Dollars per Ton)	(Dollars per Ton)	(Dollars per Ton)	(Dollars per Ton)	(Dollars per Ton)
2007	75.00	80.00	80.00	85.00	93.00	110.00	105.00	110.00	120.00	120.00	120.00	120.00
2008	120.00	120.00	125.00	130.00	145.00	130.00	140.00	140.00	145.00	135.00	130.00	135.00
2009	135.00	140.00	130.00	115.00	130.00	100.00	90.00	90.00	85.00	100.00	(D)	90.00
2010	85.00	100.00	105.00	90.00	85.00	95.00	100.00	85.00	99.00	99.00	99.00	99.00
2011	99.00	100.00	106.00	132.00	133.00	141.00	157.00	148.00	159.00	163.00	150.00	154.00
2012	152.00	142.00	141.00	152.00	163.00	158.00	160.00	151.00	150.00	147.00	147.00	154.00
2013	148.00	148.00	142.00	148.00	153.00	153.00	165.00	155.00	150.00	155.00	145.00	145.00
2014	145.00	145.00	140.00	140.00	140.00	140.00	160.00	165.00	165.00	160.00	150.00	145.00
2015	145.00	145.00	135.00	140.00	140.00	140.00	135.00	130.00	130.00	130.00	130.00	130.00
2016	130.00	130.00	120.00	115.00	100.00	100.00	100.00	100.00	110.00	110.00	110.00	105.00

(D) Withheld to avoid disclosing data for individual operations.

Farm Labor: Number Hired, Wage Rates, & Hours Worked – Mountain II Region: July 2016, October 2016, January 2017, & April 2017 ^{1 2}

	July 2016	October 2016	January 2017	April 2017
Hired Workers				
Hired Workers.....	23,000	20,000	11,000	14,000
Expected to be Employed				
150 Days or More	17,000	16,000	10,000	12,000
149 Days or Less.....	6,000	4,000	1,000	2,000
Hours Worked (per Week)				
Hours Worked by Hired Workers.....	43.6	43.1	44.4	45.3
Wage Rates (Dollars per Hours)				
Wage Rates for all Hired Workers.....	11.09	11.03	12.55	12.29
Type of Worker				
Field	10.93	10.84	11.49	11.48
Livestock.....	10.48	10.31	11.91	11.62
Field & Livestock Combined.....	10.70	10.55	11.75	11.55

¹ Mountain II Region includes Colorado, Nevada, and Utah.

² Excludes Agricultural Service workers.

Grazing Fees: Annual Average Rates – Utah: 2007-2016

Year	Per Animal Unit ¹ (Dollars per Month)	Cow-Calf (Dollars per Month)	Per Head (Dollars per Month)
2007	12.90	14.60	14.20
2008	13.00	15.90	15.50
2009	13.00	16.30	15.30
2010	13.10	17.00	15.50
2011	13.20	18.60	15.80
2012	13.70	16.70	16.00
2013	14.50	18.50	16.00
2014	15.00	19.00	16.50
2015	16.00	20.00	17.00
2016	16.50	20.00	17.00

¹ Includes animal unit plus cow-calf rate converted to animal unit (AUM) using (1 aum=cow-calf * 0.833)

County Estimates: Select Items & Years – Utah

Item	Unit	State	County					
			Beaver	Box Elder	Cache	Carbon	Daggett	Davis
2016 Production								
All Barley.....(Bushels)		1,558,000	(D)	152,000	723,000	(D)	-	(D)
Alfalfa & Alfalfa Mix Hay (Tons)		2,226,000	106,700	173,500	209,500	22,600	(D)	19,100
January 1, 2017								
All Cattle & Calves(Head)		820,000	22,500	90,000	55,000	11,200	2,800	3,400
Beef Cows.....(Head)		338,000	11,800	34,500	9,500	6,900	1,600	1,800
Milk Cows.....(Head)		92,000	1,300	8,900	16,400	-	-	-
Sheep & Lambs(Head)		275,000	(D)	36,000	1,400	14,600	100	600
Cash Receipts, 2015 ¹								
Livestock (1,000 Dollars)		1,552,227	189,456	131,072	134,615	9,206	2,776	5,817
Crops (1,000 Dollars)		405,158	153,22	44,510	23,795	1,817	590	24,200
Total (1,000 Dollars)		1,957,385	204,778	175,582	158,409	11,023	3,366	30,017
2012 Census of Agriculture ²								
Number of Farms ³(Number)		18,027	277	1,235	1,217	319	51	493
Land in Farms ³ (Acres)		10,974,369	189,995	1,170,736	268,511	240,652	(D)	55,017
Harvested Cropland ⁴ (Acres)		1,054,369	32,291	151,884	106,090	8,776	5,256	11,965
Irrigated Land ⁵ (Acres)		1,104,257	37,615	102,925	76,289	11,128	7,294	13,809

See footnote(s) at end of table on page 63.

--continued

County Estimates: Select Items & Years – Utah (Continued)

Item	Unit	County						
		Duchesne	Emery	Garfield	Grand	Iron	Juab	Kane
2016 Production								
All Barley..... (Bushels)		(D)	(D)	-	(D)	(D)	53,000	-
Alfalfa & Alfalfa Mix Hay (Tons)		115,000	66,700	27,000	(D)	233,000	81,000	8,500
January 1, 2017								
All Cattle & Calves(Head)		49,500	26,500	18,700	3,600	43,500	18,300	8,700
Beef Cows.....(Head)		25,500	14,300	11,000	1,800	10,000	(D)	4,800
Milk Cows.....(Head)		1,700	(D)	(D)	-	10,000	(D)	(D)
Sheep & Lambs(Head)		1,500	1,200	500	(D)	34,500	(D)	1,100
Cash Receipts, 2015 ¹								
Livestock (1,000 Dollars)		61,101	15,400	15,150	2,841	85,325	24,898	7,049
Crops (1,000 Dollars)		13,343	3,528	2,734	1,648	40,757	8,033	593
Total (1,000 Dollars)		74,444	18,928	17,884	4,489	126,082	32,931	7,642
2012 Census of Agriculture ²								
Number of Farms ³ (Number)		1,058	587	279	81	509	353	183
Land in Farms ³ (Acres)		1,088,559	156,229	91,533	(D)	532,464	242,909	125,441
Harvested Cropland ⁴ (Acres)		59,206	26,117	14,964	3,478	62,909	22,788	2,713
Irrigated Land ⁵ (Acres)		100,909	51,743	19,619	4,165	61,619	20,454	3,953

See footnote(s) at end of table on page 63.

--continued

County Estimates: Select Items & Years – Utah (Continued)

Item	Unit	County							
		Millard	Morgan	Piute	Rich	Salt Lake	San Juan	Sanpete	Sevier
2016 Production									
All Barley	(Bushel)	93,000	88,000	(D)	(D)	(D)	(D)	(D)	(D)
Alfalfa & Alfalfa Mix Hay	(Tons)	312,000	28,000	35,000	42,800	7,800	8,000	142,000	105,000
January 1, 2017									
All Cattle & Calves	(Head)	75,000	7,900	15,200	47,000	3,200	15,100	52,000	49,000
Beef Cows	(Head)	23,000	3,600	(D)	30,500	1,600	10,100	16,600	12,400
Milk Cows	(Head)	15,800	700	(D)	-	(D)	-	6,600	4,000
Sheep & Lambs	(Head)	2,500	9,900	8,100	8,800	1,100	5,300	52,000	6,500
Cash Receipts, 2015 ¹									
Livestock	(1,000 Dollars)	154,691	14,548	21,565	51,978	6,275	15,233	213,476	69,626
Crops	(1,000 Dollars)	50,462	2,526	1,399	3,358	11,130	2,060	15,635	14,171
Total	(1,000 Dollars)	205,153	17,074	22,964	55,336	17,405	17,293	229,111	83,797
2012 Census of Agriculture ²									
Number of Farms ³	(Number)	728	301	123	158	630	746	901	674
Land in Farms ³	(Acres)	577,405	228,678	37,843	409,359	78,162	1,608,901	284,311	122,328
Harvested Cropland ⁴	(Acres)	110,858	11,104	13,089	55,613	7,023	35,018	61,694	35,005
Irrigated Land ⁵	(Acres)	115,207	9,023	13,885	65,965	6,830	4,277	68,864	40,171

See footnote(s) at bottom of page.

--continued

County Estimates: Select Items & Years – Utah (Continued)

Item	Unit	County							
		Summit	Tooele	Uintah	Utah	Wasatch	Washington	Wayne	Weber
2016 Production									
All Barley	(Bushel)	(D)	(D)	(D)	60,000	(D)	(D)	(D)	(D)
Alfalfa & Alfalfa Mix Hay	(Tons)	15,300	32,500	156,000	99,000	13,400	21,800	47,000	51,800
January 1, 2017									
All Cattle & Calves	(Head)	15,200	23,500	38,000	61,000	10,000	15,300	17,900	21,000
Beef Cows	(Head)	9,200	14,000	23,000	16,600	5,900	9,400	9,000	6,200
Milk Cows	(Head)	500	(D)	600	14,800	600	(D)	800	4,700
Sheep & Lambs	(Head)	25,000	2,500	12,300	11,600	22,000	600	7,100	700
Cash Receipts, 2015 ¹									
Livestock	(1,000 Dollars)	24,558	51,343	39,282	136,349	11,808	10,330	16,370	30,089
Crops	(1,000 Dollars)	2,358	8,426	14,908	76,859	2,439	4,987	2,314	11,257
Total	(1,000 Dollars)	26,916	59,769	54,190	213,208	14,247	15,317	18,684	41,346
2012 Census of Agriculture ²									
Number of Farms ³	(Number)	618	476	1,231	2,462	450	579	187	1,121
Land in Farms ³	(Acres)	270,061	347,024	(D)	343,077	149,224	147,991	42,361	117,415
Harvested Cropland ⁴	(Acres)	15,115	18,004	48,594	75,086	9,389	8,712	13,983	27,645
Irrigated Land ⁵	(Acres)	20,775	22,958	68,950	75,167	12,420	14,781	15,720	37,742

- Represents zero.

(D) Withheld to avoid disclosing data for individual operations.

¹ Source: Bureau of Economic Analysis, U.S. Department of Commerce. All dollar estimates are in current dollars (not adjusted for inflation).

² These county estimates are only published once every 5 years with the Census of Agriculture.

³ State level estimates are published annually, number of farms and land in farms for the state of Utah are for 2015

⁴ Includes land from which crops were harvested or hay was cut, and land in orchards.

⁵ Includes all land watered by any artificial or controlled means, such as sprinklers, furrows or ditches and spreader dikes.

County Estimates: All Barley, All Cropping Practices – Utah: 2015 & 2016 ¹

District & County	Acres				Harvested Yield		Production	
	Planted		Harvested		2015	2016	2015	2016
	2015	2016	2015	2016				
(Acres)	(Acres)	(Acres)	(Acres)	(Bushels)	(Bushels)	(Bushels)	(Bushels)	
Northern								
Box Elder	2,600	3,500	1,800	1,800	80.0	84.4	144,000	152,000
Cache.....	9,100	10,000	8,700	9,200	79.8	78.6	694,000	723,000
Morgan.....	1,200	1,500	1,000	1,200	90.0	73.3	90,000	88,000
Other Counties.	1,000	2,000	400	1,700	80.0	88.2	32,000	150,000
Total	13,900	17,000	11,900	13,900	80.7	80.1	960,000	1,113,000
Central								
Juab	(D)	600	(D)	600	(D)	88.3	(D)	53,000
Millard	3,100	3,900	1,050	950	94.3	97.9	99,000	93,000
Sanpete.....	1,700	(D)	600	(D)	91.7	(D)	55,000	(D)
Utah	3,400	1,400	1,300	650	91.5	92.3	119,000	60,000
Other Counties.	1,200	2,600	550	800	98.2	70.0	54,000	56,000
Total	9,400	8,500	3,500	3,000	93.4	87.3	327,000	262,000
Eastern								
Other Counties.	1,000	(D)	300	(D)	100.0	(D)	30,000	(D)
Total	1,000	(D)	300	(D)	100.0	(D)	30,000	(D)
Southern								
Other Counties.	2,700	(D)	300	(D)	90.0	(D)	27,000	(D)
Total	2,700	(D)	300	(D)	90.0	(D)	27,000	(D)
Other Districts	(D)	3,500	(D)	2,100	(D)	87.1	(D)	183,000
State								
Total	27,000	29,000	16,000	19,000	84.0	82.0	1,344,000	1,558,000

(D) Withheld to avoid disclosing data for individual operations.

¹ Missing counties and counties with missing data are included in the appropriate district's "Other Counties". Districts with missing data are included in "Other Districts".

County Estimates: Alfalfa & Alfalfa Mixtures for Hay, All Cropping Practices – Utah: 2015 & 2016 ¹

District & County	Acres Harvested		Harvested Yield		Production	
	2015	2016	2015	2016	2015	2016
	(Acres)	(Acres)	(Tons)	(Tons)	(Tons)	(Tons)
Northern						
Box Elder	45,000	41,500	4.25	4.20	191,000	173,500
Cache	45,000	47,100	4.30	4.45	193,000	209,500
Davis.....	3,500	4,100	4.55	4.65	16,000	19,100
Morgan	8,500	9,500	2.75	2.95	23,300	28,000
Rich.....	15,000	14,400	2.70	2.95	40,200	42,800
Salt Lake.....	2,000	2,000	4.00	3.90	8,000	7,800
Tooele.....	8,000	8,100	3.75	4.00	30,000	32,500
Weber.....	13,000	13,300	3.75	3.90	48,500	51,800
Total	140,000	140,000	3.95	4.05	550,000	565,000
Central						
Juab.....	16,000	19,500	4.40	4.15	70,000	81,000
Millard	59,000	62,500	4.80	5.00	282,000	312,000
Sanpete	37,000	40,300	4.05	3.50	150,000	142,000
Sevier.....	23,000	22,500	3.75	4.65	86,000	105,000
Utah	22,000	29,200	4.20	3.40	92,000	99,000
Total	157,000	174,000	4.35	4.25	680,000	739,000
Eastern						
Carbon.....	7,000	6,900	3.60	3.30	25,300	22,600
Daggett.....	3,000	(D)	2.05	(D)	6,200	(D)
Duchesne	30,000	30,500	3.45	3.75	104,000	115,000
Emery	17,000	19,800	3.30	3.35	55,700	66,700
Grand.....	(D)	(D)	(D)	(D)	(D)	(D)
San Juan	4,400	5,300	1.85	1.50	8,200	8,000
Summit.....	(D)	7,000	(D)	2.20	(D)	15,300
Uintah	29,500	35,000	3.75	4.45	110,000	156,000
Wasatch.....	4,500	4,200	3.40	3.20	15,400	13,400
Other Counties	11,600	9,300	4.35	4.95	50,200	46,000
Total	107,000	118,000	3.50	3.75	375,000	443,000
Southern						
Beaver	25,000	20,800	4.75	5.15	118,500	106,700
Garfield	10,000	7,800	3.15	3.45	31,300	27,000
Iron.....	42,500	43,000	5.10	5.40	217,500	233,000
Kane	2,500	2,300	3.60	3.70	9,000	8,500
Piute.....	8,000	8,100	4.25	4.30	33,900	35,000
Washington.....	5,500	4,400	5.05	4.95	27,800	21,800
Wayne.....	12,500	11,600	3.85	4.05	48,000	47,000
Total	106,000	98,000	4.60	4.90	486,000	479,000
State						
Total	510,000	530,000	4.10	4.20	2,091,000	2,226,000

(D) Withheld to avoid disclosing data for individual operations.

¹ Missing counties and counties with missing data are included in the appropriate district's "Other Counties". Districts with missing data are included in "Other Districts".

County Estimates: Cattle – Utah: January 1, 2016 & 2017 ¹

District & County	All Cattle		Beef Cows		Milk Cows	
	2016	2017	2016	2017	2016	2017
	(Head)	(Head)	(Head)	(Head)	(Head)	(Head)
Northern						
Box Elder	92,000	90,000	33,000	34,500	9,500	8,900
Cache.....	57,000	55,000	9,200	9,500	16,100	16,400
Davis	3,500	3,400	1,700	1,800	(D)	-
Morgan.....	8,100	7,900	3,500	3,600	600	700
Rich.....	48,000	47,000	29,000	30,500	-	-
Salt Lake.....	3,200	3,200	1,500	1,600	(D)	(D)
Tooele.....	24,000	23,500	13,500	14,000	(D)	(D)
Weber.....	21,500	21,000	6,000	6,200	4,700	4,700
Central						
Juab.....	18,700	18,300	(D)	(D)	(D)	(D)
Millard.....	77,000	75,000	22,500	23,000	16,900	15,800
Sanpete.....	53,000	52,000	16,000	16,600	6,700	6,600
Sevier.....	50,000	49,000	11,900	12,400	4,000	4,000
Utah.....	62,000	61,000	15,900	16,600	16,000	14,800
Eastern						
Carbon.....	11,400	11,200	6,600	6,900	(D)	-
Daggett.....	2,900	2,800	1,500	1,600	-	-
Duchesne.....	51,000	49,500	24,500	25,500	2,700	1,700
Emery.....	27,000	26,500	13,700	14,300	100	(D)
Grand.....	3,700	3,600	1,800	1,800	(D)	-
San Juan.....	15,500	15,100	9,800	10,100	(D)	-
Summit.....	15,600	15,200	9,000	9,200	800	500
Uintah.....	39,000	38,000	22,000	23,000	700	600
Wasatch.....	10,300	10,000	5,700	5,900	500	600
Southern						
Beaver.....	23,000	22,500	11,400	11,800	(D)	1,300
Garfield.....	19,200	18,700	10,600	11,000	(D)	(D)
Iron.....	45,000	43,500	9,600	10,000	8,900	10,000
Kane.....	8,900	8,700	4,600	4,800	(D)	(D)
Piute.....	15,500	15,200	(D)	(D)	(D)	(D)
Washington.....	15,700	15,300	9,000	9,400	100	(D)
Wayne.....	18,300	17,900	8,600	9,000	700	800
Other Counties.....	-	-	12,900	13,400	6,000	4,600
State Total.....	840,000	820,000	325,000	338,000	95,000	92,000

- Represents zero.

(D) Withheld to avoid disclosing data for individual operations.

¹ Counties with missing data are included in "Other Counties".

County Estimates: Sheep – Utah: January 1, 2016 & 2017 ¹

District & County	All Sheep & Lambs 2016 (Head)	All Sheep & Lambs 2017 (Head)
Northern		
Box Elder	38,000	36,000
Cache	1,400	1,400
Davis.....	600	600
Morgan	11,000	9,900
Rich.....	9,100	8,800
Salt Lake.....	1,100	1,100
Tooele.....	2,500	2,500
Weber	600	700
Central		
Juab	(D)	(D)
Millard	3,000	2,500
Sanpete	57,000	52,000
Sevier.....	6,000	6,500
Utah	13,300	11,600
Eastern		
Carbon	14,000	14,600
Daggett	100	100
Duchesne	1,500	1,500
Emery	1,400	1,200
Grand.....	(D)	(D)
San Juan	5,400	5,300
Summit.....	27,000	25,000
Uintah	12,600	12,300
Wasatch.....	19,300	22,000
Southern		
Beaver	(D)	(D)
Garfield	500	500
Iron.....	35,000	34,500
Kane	1,100	1,100
Piute.....	8,000	8,100
Washington.....	700	600
Wayne.....	6,600	7,100
Other Counties	8,200	7,500
State Total	285,000	275,000

(D)Withheld to avoid disclosing data for individual operations.

¹ Counties with undisclosed data are included in "Other Counties".

County Estimates: Cash Rent per Acre ¹ – Utah: 2014 & 2016

District & County	Rented for Cash ^{2 3 4}					
	Irrigated Cropland		Non-Irrigated Cropland		Pastureland	
	2014	2016	2014	2016	2014	2016
	(Dollars/Acre)	(Dollars/Acre)	(Dollars/Acre)	(Dollars/Acre)	(Dollars/Acre)	(Dollars/Acre)
Northern						
Box Elder	107.00	115.00	27.00	39.50	4.80	(D)
Cache	104.00	96.50	41.00	40.00	13.00	13.50
Davis	153.00	129.00	26.00	(D)	20.50	(D)
Morgan.....	76.00	79.50	(D)	21.50	(D)	(D)
Rich.....	49.00	28.50	16.00	(D)	(D)	6.50
Salt Lake.....	81.00	97.50	(D)	(D)	(D)	5.80
Tooele.....	72.50	41.00	(D)	11.00	8.30	4.00
Weber	100.00	93.00	42.50	31.00	23.00	20.00
Other Counties.....	(D)	(D)	33.50	(D)	7.10	6.60
Total	106.00	96.50	33.00	33.00	7.20	6.90
Central						
Juab	49.50	43.50	15.00	14.50	4.60	3.80
Millard	96.00	101.00	(D)	(D)	3.40	4.80
Sanpete	75.00	87.00	18.50	(D)	4.80	5.00
Sevier.....	99.50	94.50	(D)	38.50	11.50	6.60
Utah	86.50	98.00	19.50	50.00	4.90	5.70
Other Counties.....	(D)	(D)	16.50	20.00	(D)	(D)
Total	86.00	92.00	18.00	21.50	4.60	5.10
Eastern						
Carbon	47.00	53.00	(D)	(D)	2.20	(D)
Duchesne.....	63.50	59.00	(D)	(D)	(D)	(D)
Emery	50.00	47.00	(D)	11.50	1.70	2.90
San Juan.....	(D)	53.00	(D)	(D)	2.50	2.60
Summit.....	49.50	46.50	(D)	30.50	3.30	3.00
Uintah	50.00	64.50	(D)	(D)	11.00	11.00
Wasatch.....	59.00	74.50	(D)	24.00	7.60	8.60
Other Counties.....	38.00	35.00	(D)	20.50	15.00	5.70
Total	54.50	57.00	(D)	21.00	4.10	4.80
Southern						
Beaver	(D)	45.50	(D)	(D)	30.00	27.50
Garfield	62.00	52.50	(D)	(D)	(D)	8.00
Iron.....	116.00	99.00	(D)	(D)	2.60	2.40
Kane	(D)	71.50	(D)	(D)	(D)	3.60
Piute.....	45.00	62.50	(D)	(D)	(D)	8.80
Washington.....	96.00	96.50	(D)	(D)	(D)	4.70
Wayne.....	62.00	67.00	(D)	(D)	13.50	11.00
Other Counties.....	92.00	(D)	(D)	23.00	5.20	(D)
Total	96.50	85.50	(D)	23.00	3.70	3.40
Other Districts.....	(D)	(D)	19.00	(D)	(D)	(D)
State						
Total	91.00	88.00	25.00	25.50	5.00	5.00

(D) Withheld to avoid disclosing data for individual operations.

¹ Cash Rents estimated every other year

² Counties with missing data are included in the appropriate district's "Other Counties".

³ Districts with missing totals are included in "Other Districts"

⁴ Counties not listed may also be included in "Other Counties" or "Other Districts".



Northern Utah Grass-Fed Beef Production Costs and Returns, 2016

Kynda Curtis, Professor and Extension Specialist, Department of Applied Economics

Trevor Knudsen, Graduate Research Assistant, Department of Applied Economics

Introduction

Sample costs and returns to raise grass-fed beef cattle for direct-to-consumer sales on small-scale operations in Northern Utah are presented in this publication. This publication is intended to be a guide used to make production decisions, determine potential returns, and prepare business and marketing plans. The practices described are not the recommendations of Utah State University, but rather the production practices and materials considered typical as determined by 2016 producer survey results. Costs, materials, and practices are not applicable to all situations as management and production practices vary among ranchers in the region.

Ranch Description

Ranch

The representative ranch consists of 5 acres of land leased annually at \$1,100/acre (Realtor.com, 2016). The ranch leases an additional 10 acres of improved pasture land for weaned calf grazing from April to December at \$200/head (Neibergs and Nelson, 2009).

Livestock

The livestock inventory consists of 12 cows and one bull. The weaned calf crop is 10, of which 5 are steers and 5 are heifers (92% calving rate and 9% death loss). Fall calving (mid-October) is practiced on the ranch. Calves are weaned in the spring and are put on improved pasture in mid-April at approximately 450 pounds. Calves (8) are slaughtered and prepared for customers in late December at a final live weight of 950 pounds along with two cull breeding cows of 1,200 pounds each. Two of the heifer calves are retained and placed with breeding stock.

Production Practices

Feed

The forage base for the ranch consists of spring, summer, and

fall grazing (April to November) on federal land/leased

pasture for breeding livestock at \$150/head annually (Neibergs and Nelson, 2009). Winter feed (December to March) for breeding livestock and calves consists of alfalfa and grass hay at \$288/head annually (\$120/ton premium alfalfa; USDA-AMS, 2016a), where calves consume on average at a 25% calf to cow ratio. Weaned calves are fed on improved pasture from April to December at a rate of \$200/head. Alfalfa pasture provides an ADG of 2 pounds per calf (Ringwall, 2012). Salt and mineral supplements are provided during the year at \$250/ton.

Veterinary/Medical

Total annual veterinary costs for breeding and weaned livestock are \$35 per head (Neibergs and Nelson, 2009).

Marketing

Calves are marketed through direct market channels such as farmers markets, CSA programs, and individual ranch websites. Cull animals are marketed through wholesale channels. Annual marketing costs including website development, market fees, and transportation costs are calculated at \$100 per animal sold.

Labor

Labor includes one owner/manager who is paid out of net returns to the operation.

Livestock Pricing

Livestock pricing for grass-fed beef sold through direct markets averaged \$550/cwt for a dressed steer or heifer (USDA-AMS, 2016). As dressed weight is 63% (iGrow, 2013) of live weight at slaughter, a dressed weight of 600 pounds was used to calculate the \$3.60/pound live animal price for calves (see Table 1). Grass-fed cull cows were valued at \$2,400 each or \$2.00/pound wholesale in 2016 (USDA-AMSb, 2016). Registered Angus bulls sold for \$3,500 on average in 2016 (RanchWorldAds, 2016). All livestock is sold live and any

processing fees would need to be paid by the buyer or added to the costs provided.

Ranch Investments

Cash Overhead

Cash overhead consists of various cash expenses paid out during the year. These costs include property taxes, interest, office expenses, liability and property insurance, accounting/legal costs, as well as investment/machinery repairs (see Table 2).

Property Taxes. Property taxes in Utah differ across counties. For the purposes of this publication, property taxes on buildings are calculated at 1 percent of the average asset value of the property. Property taxes on land should be taken into consideration, but are not included here.

Insurance. Insurance on ranch investments vary, depending on the assets included and the amount of coverage. Property insurance provides coverage for property loss at .666 percent of the average asset value. Liability and crop insurance covers accidents and crop loss on the 5-acre ranch at an annual cost of \$250.

Fuel and Lube. The fuel and lube for machinery and vehicles is estimated at \$2,000 annually for the 5-acre ranch.

Maintenance. Annual repairs on all ranch investments or capital recovery items that require maintenance are calculated at 2 percent of the average asset value for buildings, improvements, and equipment and 7 percent of the average asset value for machinery and vehicles.

Office & Travel. Office and travel costs are estimated at \$1,000 for an average year for the 5-acre ranch. These expenses include office supplies (\$200), telephone/internet service (\$600), and educational workshops (\$200).

Accounting & Legal. Annual accounting and legal costs are estimated at \$450 for an average year for the 5-acre ranch (Cook Martin Poulson, P.C., 2016).

Interest on Retained Livestock. Annual costs of retaining breeding livestock are calculated at 5% of the animal's sales value. Pasture-fed breeding heifers in 2016 were valued at \$2,400 each wholesale (USDA-AMS, 2016b). Two of the ten heifers are replaced annually and bulls every 5 years.

Capital Recovery

Capital recovery costs are the annual depreciation (opportunity cost) of all ranch investments. Capital recovery costs are calculated using straight line depreciation. All equipment listed is new unless otherwise noted. For used

machinery, the price is calculated as one-half of the new purchase price and useful life is two-thirds that of new machinery (Painter, 2011). The pasture feeding equipment required, as well as costs and useful life, were taken from Neibergs and Nelson (2009).

Salvage Value

Salvage value is 10 percent of the purchase price for equipment and machinery, which is an estimate of the remaining value of an investment at the end of its useful life. The salvage value for bulls is one-half the purchase price.

Average Asset Value Computation

$$\left(\frac{\text{Purchase Price} + \text{Salvage Value}}{2} \right)$$

Straight Line Depreciation Computation

$$\frac{\text{Purchase Price} - \text{Salvage Value}}{\text{Useful Life}}$$

References

- Cook Martin Poulson, P.C. 2016. *Personal communication*. 10 October 2016.
- iGrow (SDSU Extension). 2013. How Much Meat Can You Expect from a Fed Steer? Online at: <http://igrow.org/livestock/beef/how-much-meat-can-you-expect-from-a-fed-steer/>. Neibergs, J.S. and D.D. Nelson. 2009. Estimated Costs and Returns for a 150-head Cow-Calf to Grass-finished Beef Production System in the Channelled Scablands Range Area of East-Central Washington, 2008. Washington State University Extension Farm Business Management Report EM010. Online at: http://pubs.wsu.edu/ItemDetail.aspx?ProductID=140_07
- Painter, K. 2011. The Costs of Owning and Operating Farm Machinery in the Pacific Northwest: 2011. A Pacific Northwest Publication #346. Online at: <http://www.cals.uidaho.edu/edComm/pdf/PNW/PNW0346/PNW0346.html>.
- RanchWorldAds. 2016. Cattle for Sale, Utah. Online at: <http://www.ranchworldads.com/cattle-for-sale/utah.php>.
- Realtor.com. 2016. Land for Sale/Lease, Tremonton, Utah. Online at: http://www.realtor.com/realstateandhomes-search/Tremonton_UT/type-land.
- Ringwall, K. 2012. BeefTalk: 2 Pounds of Average Daily Gain Equals Grass Beef. Online at: <https://www.ag.ndsu.edu/news/columns/beef/btalk-2-pounds-of-average-daily-gain-equals-grass-beef>
- USDA-AMS. 2016a. National Hay, Feed & Seed Weekly Summary, October 14, 2016. Online at: <https://www.ams.usda.gov/mnreports/lswfeedseed.pdf>.
- USDA-AMS. 2016b. National Monthly Grass Fed Beef Report, November 25, 2016. Online at: <https://www.ams.usda.gov/mnreports/lsmngfbee.pdf>.

Table 1. Northern Utah Grass-Fed Beef Production Costs and Returns, 10 Head

Description	Weight Per Animal	Unit of Measure	Total Units	Price/Cost Per Unit	Total Value	Value/Cost Per Head Sold
GROSS INCOME						
Cull Cows	1200.00	Pounds	2.00	\$ 2.00	\$ 4,800.00	\$ 2,400.00
Cull Bulls	1500.00	Pounds	0.00	\$ -	\$ -	\$ -
Heifer Calves	950.00	Pounds	3.00	\$ 3.60	\$ 10,260.00	\$ 3,420.00
Steer Calves	950.00	Pounds	5.00	\$ 3.60	\$ 17,100.00	\$ 3,420.00
TOTAL INCOME				\$ 32,160.00	\$ 3,216.00	
OPERATING COSTS						
Improved Pasture	April to December: Weaned Calves	Head	10.00	\$ 200.00	\$ 2,000.00	\$ 200.00
Summer Pasture/Range	April to November: Breeding Livestock	Head	13.00	\$ 150.00	\$ 1,950.00	\$ 195.00
Winter Feed (Alfalfa)	November to March	Head	15.50	\$ 288.00	\$ 4,464.00	\$ 446.40
Land Lease		Acre	5.00	\$ 1,100.00	\$ 5,500.00	\$ 550.00
Veterinary/Medical		Head	23.00	\$ 35.00	\$ 805.00	\$ 80.50
Marketing		Head	10.00	\$ 100.00	\$ 1,000.00	\$ 100.00
Salt & Minerals		Ton	1.00	\$ 250.00	\$ 250.00	\$ 25.00
Maintenance		Annual	1.00	\$ 954.25	\$ 954.25	\$ 95.43
Fuel & Lube		Annual	1.00	\$ 2,000.00	\$ 2,000.00	\$ 200.00
Utilities		Annual	1.00	\$ 500.00	\$ 500.00	\$ 50.00
Miscellaneous		Head	23.00	\$ 5.00	\$ 115.00	\$ 11.50
TOTAL OPERATING COSTS				\$ 19,538.25	\$ 1,953.83	
INCOME ABOVE OPERATING COSTS				\$ 12,621.75	\$ 1,262.18	
OWNERSHIP COSTS						
Capital Recovery (Depreciation):						
Buildings, Improvements, & Equipment		Annual	1.00	\$ 780.00	\$ 780.00	\$ 78.00
Machinery & Vehicles		Annual	1.00	\$ 2,055.00	\$ 2,055.00	\$ 205.50
Purchased Livestock (Bulls)		Annual	1.00	\$ 350.00	\$ 350.00	\$ 35.00
Cash Overhead:						
Liability Insurance		Annual	1.00	\$ 250.00	\$ 250.00	\$ 25.00
Office & Travel		Annual	1.00	\$ 1,000.00	\$ 1,000.00	\$ 100.00
Accounting & Legal Fees		Annual	1.00	\$ 450.00	\$ 450.00	\$ 45.00
Interest on Retained Livestock		Annual	1.00	\$ 1,200.00	\$ 1,200.00	\$ 120.00
Annual Investment Insurance		Annual	1.00	\$ 120.88	\$ 120.88	\$ 12.09
Annual Investment Taxes		Annual	1.00	\$ -	\$ -	\$ -
TOTAL OWNERSHIP COSTS				\$ 6,205.88	\$ 620.59	
TOTAL COSTS				\$ 25,744.13	\$ 2,574.41	
NET PROJECTED RETURNS				\$ 6,415.87	\$ 641.59	

Table 2. Ranch Investment Summary

Description	Purchase Price	Livestock Share (%)	Revised Purchase Price	Useful Life (yrs)	Salvage Value	Annual Capital Recovery	Annual Insurance	Annual Taxes	Annual Repairs
Buildings, Improvements, & Equipm									
Portable Fencing	\$ 2,500.00	100%	\$ 2,500.00	15	\$ 250.00	\$ 150.00	\$ 9.16	\$ -	\$ 27.50
Portable Corrals/Chutes	\$ 6,000.00	100%	\$ 6,000.00	15	\$ 600.00	\$ 360.00	\$ 21.98	\$ -	\$ 66.00
Watering Facilities	\$ 2,000.00	100%	\$ 2,000.00	10	\$ 200.00	\$ 180.00	\$ 7.33	\$ -	\$ 22.00
Tools/Equipment	\$ 1,000.00	100%	\$ 1,000.00	10	\$ 100.00	\$ 90.00	\$ 3.66	\$ -	\$ 11.00
Sub Total	\$ 11,500.00	NA	\$ 11,500.00	NA	\$ 1,150.00	\$ 780.00	\$ 42.12	\$ -	\$ 126.50
Machinery & Vehicles									
Case Skip Loader (used)	\$ 20,000.00	10%	\$ 2,000.00	10	\$ 200.00	\$ 180.00	\$ 7.33	\$ -	\$ 77.00
3/4 Ton Pickup	\$ 40,000.00	10%	\$ 4,000.00	8	\$ 400.00	\$ 450.00	\$ 14.65	\$ -	\$ 154.00
Livestock Trailer (used)	\$ 10,000.00	100%	\$ 10,000.00	10	\$ 1,000.00	\$ 900.00	\$ 36.63	\$ -	\$ 385.00
Flatbed Trailer (used)	\$ 5,000.00	100%	\$ 5,000.00	10	\$ 500.00	\$ 450.00	\$ 18.32	\$ -	\$ 192.50
4-Wheeler (used)	\$ 5,000.00	10%	\$ 500.00	6	\$ 50.00	\$ 75.00	\$ 1.83	\$ -	\$ 19.25
Sub Total	\$ 80,000.00	NA	\$ 21,500.00	NA	\$ 2,150.00	\$2,055.00	\$ 78.75	\$ -	\$ 827.75
Purchased Livestock									
Bulls (1)	\$ 3,500.00	100%	\$ 3,500.00	5	\$ 1,750.00	\$ 350.00	\$ -	\$ -	\$ -
Sub Total	\$ 3,500.00	NA	\$ 3,500.00	NA	\$ 1,750.00	\$ 350.00	\$ -	\$ -	\$ -
Total	\$ 95,000.00	NA		NA	\$ 5,050.00	\$3,185.00	\$ 120.88	\$ -	\$ 954.25
Retained Livestock (interest only)									
Heifers (10)	\$ 24,000.00	100%	\$ 24,000.00	NA	\$ 24,000.00	\$ 1,200.00	\$ -	\$ -	\$ -
Total	\$ 24,000.00				\$ -	\$ 1,200.00	\$ -	\$ -	\$ -

Table 3. Total Ranch Income and Net Returns by Sales Price

Price Per Pound (Live Weight)	Total Ranch Income	Income Per Head Sold	Total Ranch Net Returns
\$ 2.80	\$ 26,080.00	\$ 2,608.00	\$ 335.87
\$ 3.00	\$ 27,600.00	\$ 2,760.00	\$ 1,855.87
\$ 3.20	\$ 29,120.00	\$ 2,912.00	\$ 3,375.87
\$ 3.40	\$ 30,640.00	\$ 3,064.00	\$ 4,895.87
\$ 3.60	\$ 32,160.00	\$ 3,216.00	\$ 6,415.87
\$ 3.80	\$ 33,680.00	\$ 3,368.00	\$ 7,935.87
\$ 4.00	\$ 35,200.00	\$ 3,520.00	\$ 9,455.87
\$ 4.20	\$ 36,720.00	\$ 3,672.00	\$ 10,975.87
\$ 4.40	\$ 38,240.00	\$ 3,824.00	\$ 12,495.87
\$ 4.60	\$ 39,760.00	\$ 3,976.00	\$ 14,015.87
\$ 4.80	\$ 41,280.00	\$ 4,128.00	\$ 15,535.87



Southeastern Utah Small-Scale Mixed Vegetable Production Costs and Returns – 2 Acres, 2016

Kynda Curtis, Professor and Extension Specialist, Department of Applied Economics
Jacob Rudd, Undergraduate Extension Intern, Department of Applied Economics

Sample costs and returns to produce mixed vegetables under drip irrigation and sold through direct markets in Southeastern Utah (San Juan, Garfield, Wayne, and Grand counties) are presented in this publication. This publication is intended to be a guide used to make production decisions, determine potential returns and prepare business and marketing plans. The practices described are not the recommendations of Utah State University, but rather the production practices considered typical of a well-managed farm in the region. All practices, yields, and cost data were collected from regional markets and producers unless otherwise noted. Pricing was based upon an average of farmers' market prices across the 2015-2016 seasons. Practices, yields, costs, and pricing are not applicable to all situations as management, cultural practices, markets, and growing conditions vary across the region.

Farm. The representative farm consists of two acres of land planted in a variety of high value vegetable crops. Table 1 shows the acreage, yield, and pricing for each product. Agricultural land lease costs range from \$300 to \$1,000 annually. A lease rate of \$500 per acre is used here.

Crop Pricing & Yields. Vegetable pricing was calculated by taking the average of farmers' market prices collected at four farmers' markets in Western Colorado and Eastern Utah in 2015-2016 (See Table 1). Average prices and yields are used to calculate returns given in Table 2. A 5% loss rate is applied to all yields to account for spoilage, damage, and unsold product.

Labor. As mixed vegetable production on small acreage is labor intensive, the total farm labor (including owner labor) is 1800 hours across the season at a cost of \$10/hr. The annual cost is \$18,000 for the 2 acre farm, or \$9,000/acre (See Table 2).

Irrigation System. A drip irrigation system is used to irrigate both acres. The cost to install the system is \$1,000 per acre, or \$2,000 across all acres for the pump, filter, mainline, and setup. The annual fee for drip tape is \$1,000/acre. The system life averages 7 years (Harward Irrigation, 2016).

Irrigation. The irrigation water costs for agricultural water use are \$500/acre annually assuming a delivery system is in place.

Marketing. Marketing fees include market stand costs (\$800) and transportation to two markets weekly (\$1,000). Labor costs involved in marketing are included in the labor costs described above.

Packaging. Packaging required to bring products to market average \$400 annually across all items (Hubert.com, 2016; USU Extension, 2016a).

Food Safety/Testing. These annual costs include a \$500 water test, a \$30 scale calibration fee, a \$300 one-time workshop fee, and a \$1,000 Global GAP inspection fee (USU Extension, 2016b).

Production Inputs. All input pricing for seed, plants, fertilizer, herbicide, etc. is provided by item in Table 2 (Intermountain Farmers Association (IFA), 2016).

Fuel and Lube. The fuel and lube for machinery and vehicles is calculated at 8 percent of the average asset value (See Table 3).

Investment Repairs. Annual repairs on all farm investments or capital recovery items that require maintenance are calculated at 2 percent of the average asset value for buildings, improvements, and equipment and 7 percent of the average asset value for machinery and vehicles.

Cash Overhead. Cash overhead consists of various cash expenses paid out during the year. These costs include property taxes, interest, office expenses, liability, property insurance, and accounting/legal costs (See Table 3).

Insurance. Insurance on farm investments vary, depending on the assets included and the amount of coverage. Property insurance provides coverage for property loss at .666 percent of the average asset value. Liability and crop insurance covers accidents and crop loss on the 2 acre farm at an annual cost of \$400.

Office & Travel. Office and travel costs are estimated at \$1,000 for an average year for the 2 acre farm. These expenses include office supplies (\$200), telephone/internet service (\$600), and educational workshops (\$200).

Accounting & Legal. Annual accounting and legal costs are estimated at \$450 for an average year for the 2 acre farm (Cook Martin Poulson, P.C., 2016).

Capital Recovery. Capital recovery costs are the annual depreciation (opportunity cost) of all farm investments. Capital recovery costs are calculated using straight line

depreciation. All equipment listed is new unless otherwise noted. For used machinery the price is calculated as one-half of the new purchase price and useful life is two-thirds that of new machinery (Painter, 2011).

Salvage Value. Salvage value is 10 percent of the purchase price, which is an estimate of the remaining value of an investment at the end of its useful life. The salvage value for land is the purchase price, as land does not normally depreciate.

Average Asset Value Computation

$$\frac{\text{Purchase Price} + \text{Salvage Value}}{2}$$

Straight Line Depreciation Computation

$$\frac{\text{Purchase Price} - \text{Salvage Value}}{\text{Life}} \times \text{Useful}$$

References

Cook Martin Poulson, P.C. (2016). *Personal communication*. 10 October 2016.
 IFA – Cortez, CO (2016). *Personal communication*. 2 November 2016.
 Harward Irrigation (2016). *Personal communication*. 4 November 2016.
 Hubert.com (2016). Website listing. Online at: <http://www.hubert.com>.
 Painter, K. (2011). The Costs of Owning and Operating Farm Machinery in the Pacific Northwest: 2011. A Pacific Northwest Publication #346. Online at: <http://www.cals.uidaho.edu/edComm/pdf/PNW/PNW0346/PNW0346.html>.
 USU Extension (2016a). *Personal communication*, Dr. Karin Allen. 4 November 2016.
 USU Extension (2016b). *Personal communication*, Dr. Brian Nummer. 4 November 2016.

Table 1: Southeastern Utah Mixed Vegetable Acreage, Yields, & Pricing, 2 acres

Product	Acres	Yield	Unit	Farmers' Market Price
Tomatoes	0.25	3,500	Lbs	\$2.72
Peas	0.1	700	Lbs	\$3.50
Winter Squash	0.1	500	Lbs	\$0.75
Summer Squash	0.1	550	Each	\$1.11
Beans	0.1	850	Lbs	\$3.08
Okra	0.25	5,400	Lbs	\$1.75
Beets	0.25	3,700	Lbs	\$1.23
Potatoes	0.25	1,200	Lbs	\$1.64
Leeks	0.25	2,300	Lbs	\$1.88
Carrots	0.1	500	Lbs	\$1.86
Leafy Greens	0.25	750	Lbs	\$7.00

Table 2: Southeastern Utah Small-Scale Mixed Vegetable Production Costs & Returns, 2 acres

	Total Units	Unit	Price/Cost Per Unit	Total Cost/Value	Total Cost/Value Per Acre
GROSS INCOME					
Tomatoes	3,500	Lbs	\$2.72	\$ 9,044.00	\$ 4,522.00
Peas	700	Lbs	\$3.50	\$ 2,327.50	\$ 1,163.75
Winter Squash	500	Lbs	\$0.75	\$ 356.25	\$ 178.13
Summer Squash	550	Each	\$1.11	\$ 579.98	\$ 289.99
Beans	850	Lbs	\$3.08	\$ 2,487.10	\$ 1,243.55
Okra	5,400	Lbs	\$1.75	\$ 8,977.50	\$ 4,488.75
Beets	3,700	Lbs	\$1.23	\$ 4,323.45	\$ 2,161.73
Potatoes	1,200	Lbs	\$1.64	\$ 1,869.60	\$ 934.80
Leeks	2,300	Lbs	\$1.88	\$ 4,107.80	\$ 2,053.90
Carrots	500	Lbs	\$1.86	\$ 883.50	\$ 441.75
Leafy Greens	750	Lbs	\$7.00	\$ 4,987.50	\$ 2,493.75
TOTAL GROSS INCOME				\$ 39,944.18	\$ 19,972.09
OPERATING COSTS					
Land Rental	2	Acres	\$ 500.00	\$ 1,000.00	\$ 500.00
Irrigation Water	2	Acres	\$ 500.00	\$ 1,000.00	\$ 500.00
Utilities	1	Annual	\$ 1,500.00	\$ 1,500.00	\$ 750.00
Farm Labor	1800	Hours	\$ 10.00	\$ 18,000.00	\$ 9,000.00
Packaging	1	Annual	\$ 400.00	\$ 400.00	\$ 200.00
Food Safety/Testing	1	Annual	\$ 1,830.00	\$ 1,830.00	\$ 915.00
Marketing	1	Annual	\$ 1,800.00	\$ 1,800.00	\$ 900.00
Herbicide/Insecticide	2	Acres	\$ 45.00	\$ 90.00	\$ 45.00
Fertilizer	2	Acres	\$ 60.00	\$ 120.00	\$ 60.00
Seeds	1	Annual	\$ 700.00	\$ 700.00	\$ 350.00
Plants	1	Annual	\$ 200.00	\$ 200.00	\$ 100.00
Drip Tape	2	Acres	\$ 1,000.00	\$ 2,000.00	\$ 1,000.00
Fuel & Lube	1	Annual	\$ 660.00	\$ 660.00	\$ 330.00
Maintenance	1	Annual	\$ 693.00	\$ 693.00	\$ 346.50
Miscellaneous	2	Acres	\$ 100.00	\$ 200.00	\$ 100.00
TOTAL OPERATING COSTS				\$ 30,193.00	\$ 15,096.50
INCOME ABOVE OPERATING COSTS				\$ 9,751.18	\$ 4,875.59
OWNERSHIP COSTS					
CASH OVERHEAD COSTS					
Liability/Crop Insurance				\$ 400.00	\$ 200.00
Accounting & Legal				\$ 450.00	\$ 225.00
Office & Travel				\$ 1,000.00	\$ 500.00
Annual Investment Insurance				\$ 93.41	\$ 46.70
NONCASH OVERHEAD COSTS (Capital Recovery)					
Buildings, Improvements, & Equipment				\$ 1,430.71	\$ 715.36
Machinery & Vehicles				\$ 1,928.57	\$ 964.29
TOTAL OWNERSHIP COSTS				\$ 5,302.69	\$ 2,651.35
TOTAL COSTS				\$ 35,495.69	\$ 17,747.85
NET PROJECTED RETURNS				\$ 4,448.48	\$ 2,224.24

Table 3: Southeastern Utah Small-Scale Mixed Vegetable Investment Summary, 2 acres

Description	Purchase Price	% of Use	Purchase Price	Useful Life (Yrs)	Salvage Value	Annual Capital Recovery	Annual Insurance	Annual Repairs	Annual Fuel & Lube
Buildings, Improvements, and Equipment									
Hand Tools	\$1,000.00	100%	\$1,000.00	5.00	\$100.00	\$180.00	\$3.66	\$11.00	\$ -
Implements	\$2,500.00	100%	\$2,500.00	10.00	\$250.00	\$225.00	\$9.16	\$27.50	\$ -
Packing Shed (8X10)	\$3,000.00	100%	\$3,000.00	15.00	\$300.00	\$180.00	\$10.99	\$33.00	\$ -
Coolers (6)	\$600.00	100%	\$600.00	3.00	\$ -	\$200.00	\$2.00	\$6.00	\$ -
Carts (6)	\$1,800.00	100%	\$1,800.00	5.00	\$ -	\$360.00	\$5.99	\$18.00	\$ -
Drip Irrigation System	\$2,000.00	100%	\$2,000.00	7.00	\$ -	\$285.71	\$6.66	\$20.00	\$ -
Sub Total	\$10,900.00		\$10,900.00	NA	\$650.00	\$ 1,430.71	\$38.46	\$115.50	\$ -
Machinery and Vehicles									
1-1/2 Ton Truck	\$30,000.00	50%	\$15,000.00	7.00	\$1,500.00	\$ 1,928.57	\$54.95	\$577.50	\$660.00
Sub Total	\$30,000.00		\$15,000.00	NA	\$1,500.00	\$ 1,928.57	\$54.95	\$577.50	\$660.00
Total	\$40,900.00		\$25,900.00	NA	\$2,150.00	\$ 3,359.29	\$93.41	\$693.00	\$660.00



Southern Utah Grass-Fed Beef Production Costs and Returns, 2016

Kynda Curtis, Professor and Extension Specialist, Department of Applied Economics
Trevor Knudsen, Graduate Research Assistant, Department of Applied Economics

Introduction

Sample costs and returns to raise grass-fed beef cattle for direct-to-consumer sales on small-scale operations in Southern Utah are presented in this publication. This publication is intended to be a guide used to make production decisions, determine potential returns, and prepare business and marketing plans. The practices described are not the recommendations of Utah State University, but rather the production practices and materials considered typical as determined by 2016 producer survey results. Costs, materials, and practices are not applicable to all situations as management and production practices vary among ranchers in the region.

Ranch Description

Ranch

The representative ranch consists of 5 acres of land leased annually at \$500/acre (Realtor.com, 2016). The ranch leases an additional 10 acres of improved pasture land for weaned calf grazing from April to December at \$200/head (Neibergs and Nelson, 2009).

Livestock

livestock inventory consists of 12 cows and one bull. The weaned calf crop is 10, of which 5 are steers and 5 are heifers (92% calving rate and 9% death loss). Fall calving (mid-October) is practiced on the ranch. Calves are weaned in the spring and are put on improved pasture in mid-April at approximately 450 pounds. Calves (8) are slaughtered and prepared for customers in late December at a final live weight of 950 pounds along with two cull breeding cows of 1,200 pounds each. Two of the heifer calves are retained and placed with breeding stock.

Production Practices

Feed

The forage base for the ranch consists of grazing on federal land/leased pasture for breeding livestock at \$25/month per animal or \$300/head annually (Neibergs and Nelson, 2009). Calves also graze on federal

land/leased pasture in the winter months at a 25% calf to cow ratio. Weaned calves are fed on improved pasture from April to December at a rate of \$200/head. Alfalfa pasture provides an ADG of 2 pounds per calf (Ringwall, 2012). Salt and mineral supplements are provided during the year at \$250/ton.

Veterinary/Medical

Total annual veterinary costs for breeding and weaned livestock are \$35 per head (Neibergs and Nelson, 2009).

Marketing

Calves are marketed through direct market channels such as farmers' markets, CSA programs, and individual ranch websites. Cull animals are marketed through wholesale channels. Annual marketing costs including website development, market fees, and transportation costs are calculated at \$100 per animal sold.

Labor

Labor includes one owner/manager who is paid out of net returns to the operation.

Livestock Pricing

Livestock pricing for grass-fed beef sold through direct markets averaged \$550/cwt for a dressed steer or heifer (USDA-AMS, 2016). As dressed weight is 63% (iGrow, 2013) of live weight at slaughter, a dressed weight of 600 pounds was used to calculate the \$3.60/pound live animal price for calves (see Table 1). Grass-fed cull cows were valued at \$2,400 each or \$2.00/pound wholesale in 2016 (USDA-AMSb, 2016). Registered Angus bulls sold for \$3,500 on average in 2016 (RanchWorldAds, 2016). All livestock is sold live and any processing fees would need to be paid by the buyer or added to the costs provided.

Ranch Investments

Cash Overhead

Cash overhead consists of various cash expenses paid out during the year. These costs include property taxes, interest, office expenses, liability and property insurance, accounting/legal costs, as well as investment/machinery repairs (see Table 2).

Property Taxes. Property taxes in Utah differ across counties. For the purposes of this publication, property taxes on buildings are calculated at 1 percent of the average asset value of the property. Property taxes on land should be taken into consideration, but are not included here.

Insurance. Insurance on ranch investments vary, depending on the assets included and the amount of coverage. Property insurance provides coverage for property loss at .666 percent of the average asset value. Liability and crop insurance covers accidents and crop loss on the 5-acre ranch at an annual cost of \$250.

Fuel and Lube. The fuel and lube for machinery and vehicles is estimated at \$2,000 annually for the 5-acre ranch.

Maintenance. Annual repairs on all ranch investments or capital recovery items that require maintenance are calculated at 2 percent of the average asset value for buildings, improvements, and equipment and 7 percent of the average asset value for machinery and vehicles.

Office & Travel. Office and travel costs are estimated at \$1,000 for an average year for the 5-acre ranch. These expenses include office supplies (\$200), telephone/internet service (\$600), and educational workshops (\$200).

Accounting & Legal. Annual accounting and legal costs are estimated at \$450 for an average year for the 5-acre ranch (Cook Martin Poulson, P.C., 2016).

Interest on Retained Livestock. Annual costs of retaining breeding livestock are calculated at 5% of the animal's sales value. Pasture-fed breeding heifers in 2016 were valued at \$2,400 each wholesale (USDA-AMS, 2016b). Two of the ten heifers are replaced annually and bulls every 5 years.

Capital Recovery

Capital recovery costs are the annual depreciation (opportunity cost) of all ranch investments. Capital recovery costs are calculated using straight line depreciation. All equipment listed is new unless otherwise noted. For used machinery, the price is calculated as one-half of the new purchase price and useful life is two-thirds that of new machinery (Painter, 2011). The pasture feeding equipment required, as well as costs and useful life, were taken from Neibergs and Nelson (2009).

Salvage Value

Salvage value is 10 percent of the purchase price for equipment and machinery, which is an estimate of the remaining value of an investment at the end of its useful life. The salvage value for bulls is one-half the purchase price.

Average Asset Value Computation

$$\left(\frac{\text{Purchase Price} + \text{Salvage Value}}{2} \right)$$

Straight Line Depreciation Computation

$$\frac{\text{Purchase Price} - \text{Salvage Value}}{\text{Useful Life}}$$

References

- Cook Martin Poulson, P.C. 2016. *Personal communication*. 10 October 2016.
- iGrow (SDSU Extension). 2013. How Much Meat Can You Expect from a Fed Steer? Online at: <http://igrow.org/livestock/beef/how-much-meat-can-you-expect-from-a-fed-steer/>.
- Neibergs, J.S. and D.D. Nelson. 2009. Estimated Costs and Returns for a 150-head Cow-Calf to Grass-finished Beef Production System in the Channelled Scablands Range Area of East-Central Washington, 2008. Washington State University Extension Farm

- Business Management Report EM010. Online at:
http://pubs.wsu.edu/ItemDetail.aspx?ProductID=140_07
- Painter, K. 2011. The Costs of Owning and Operating Farm Machinery in the Pacific Northwest: 2011. A Pacific Northwest Publication #346. Online at:
<http://www.cals.uidaho.edu/edComm/pdf/PNW/PNW0346/PNW0346.html>.
- RanchWorldAds. 2016. Cattle for Sale, Utah. Online at:
<http://www.ranchworldads.com/cattle-for-sale/utah.php>.
- Realtor.com. 2016. Land for Sale/Lease, Tremonton, Utah. Online at:
http://www.realtor.com/realestateandhomes-search/Tremonton_UT/type-land.
- Ringwall, K. 2012. BeefTalk: 2 Pounds of Average Daily Gain Equals Grass Beef. Online at:
<https://www.ag.ndsu.edu/news/columns/beeftalk/beeftalk-2-pounds-of-average-daily-gain-equals-grass-beef>
- USDA-AMS. 2016a. National Hay, Feed & Seed Weekly Summary, October 14, 2016. Online at:
<https://www.ams.usda.gov/mnreports/lswfeedseed.pdf>.
- USDA-AMS. 2016b. National Monthly Grass Fed Beef Report, November 25, 2016. Online at:
<https://www.ams.usda.gov/mnreports/lsmngfbeef.pdf>.
-

Table 1. Southern Utah Grass-Fed Beef Production Costs and Returns, 10 Head

Description	Weight Per Animal	Unit of Measure	Total Units	Price/Cost Per Unit	Total Value	Value/Cost Per Head Sold
GROSS INCOME						
Cull Cows	1200.00	Pounds	2.00	\$ 2.00	\$ 4,800.00	\$ 2,400.00
Cull Bulls	1500.00	Pounds	0.00	\$ -	\$ -	\$ -
Heifer Calves	950.00	Pounds	3.00	\$ 2.90	\$ 8,265.00	\$ 2,755.00
Steer Calves	950.00	Pounds	5.00	\$ 2.90	\$ 13,775.00	\$ 2,755.00
TOTAL INCOME					\$ 26,840.00	\$ 2,684.00
OPERATING COSTS						
Improved Pasture	April to December: Weaned Calves	Head	10.00	\$ 200.00	\$ 2,000.00	\$ 200.00
Pasture/Range	Breeding Livestock	Head	13.00	\$ 300.00	\$ 3,900.00	\$ 390.00
Pasture/Range	November to March: Calves	Head	10.00	\$ 125.00	\$ 1,250.00	\$ 125.00
Land Lease		Acre	5.00	\$ 500.00	\$ 2,500.00	\$ 250.00
Veterinary/Medical		Head	23.00	\$ 35.00	\$ 805.00	\$ 80.50
Marketing		Head	10.00	\$ 100.00	\$ 1,000.00	\$ 100.00
Salt & Minerals		Ton	1.00	\$ 250.00	\$ 250.00	\$ 25.00
Maintenance		Annual	1.00	\$ 954.25	\$ 954.25	\$ 95.43
Fuel & Lube		Annual	1.00	\$ 2,000.00	\$ 2,000.00	\$ 200.00
Utilities		Annual	1.00	\$ 500.00	\$ 500.00	\$ 50.00
Miscellaneous		Head	23.00	\$ 5.00	\$ 115.00	\$ 11.50
TOTAL OPERATING COSTS					\$ 15,274.25	\$ 1,527.43
INCOME ABOVE OPERATING COSTS					\$ 11,565.75	\$ 1,156.58
OWNERSHIP COSTS						
Capital Recovery (Depreciation):						
Buildings, Improvements, & Equipment		Annual	1.00	\$ 780.00	\$ 780.00	\$ 78.00
Machinery & Vehicles		Annual	1.00	\$ 2,055.00	\$ 2,055.00	\$ 205.50
Purchased Livestock (Bulls)		Annual	1.00	\$ 350.00	\$ 350.00	\$ 35.00
Cash Overhead:						
Liability Insurance		Annual	1.00	\$ 250.00	\$ 250.00	\$ 25.00
Office & Travel		Annual	1.00	\$ 1,000.00	\$ 1,000.00	\$ 100.00
Accounting & Legal Fees		Annual	1.00	\$ 450.00	\$ 450.00	\$ 45.00
Interest on Retained Livestock		Annual	1.00	\$ 1,200.00	\$ 1,200.00	\$ 120.00
Annual Investment Insurance		Annual	1.00	\$ 120.88	\$ 120.88	\$ 12.09
Annual Investment Taxes		Annual	1.00	\$ -	\$ -	\$ -
TOTAL OWNERSHIP COSTS					\$ 6,205.88	\$ 620.59
TOTAL COSTS					\$ 21,480.13	\$ 2,148.01
NET PROJECTED RETURNS					\$ 5,359.87	\$ 535.99

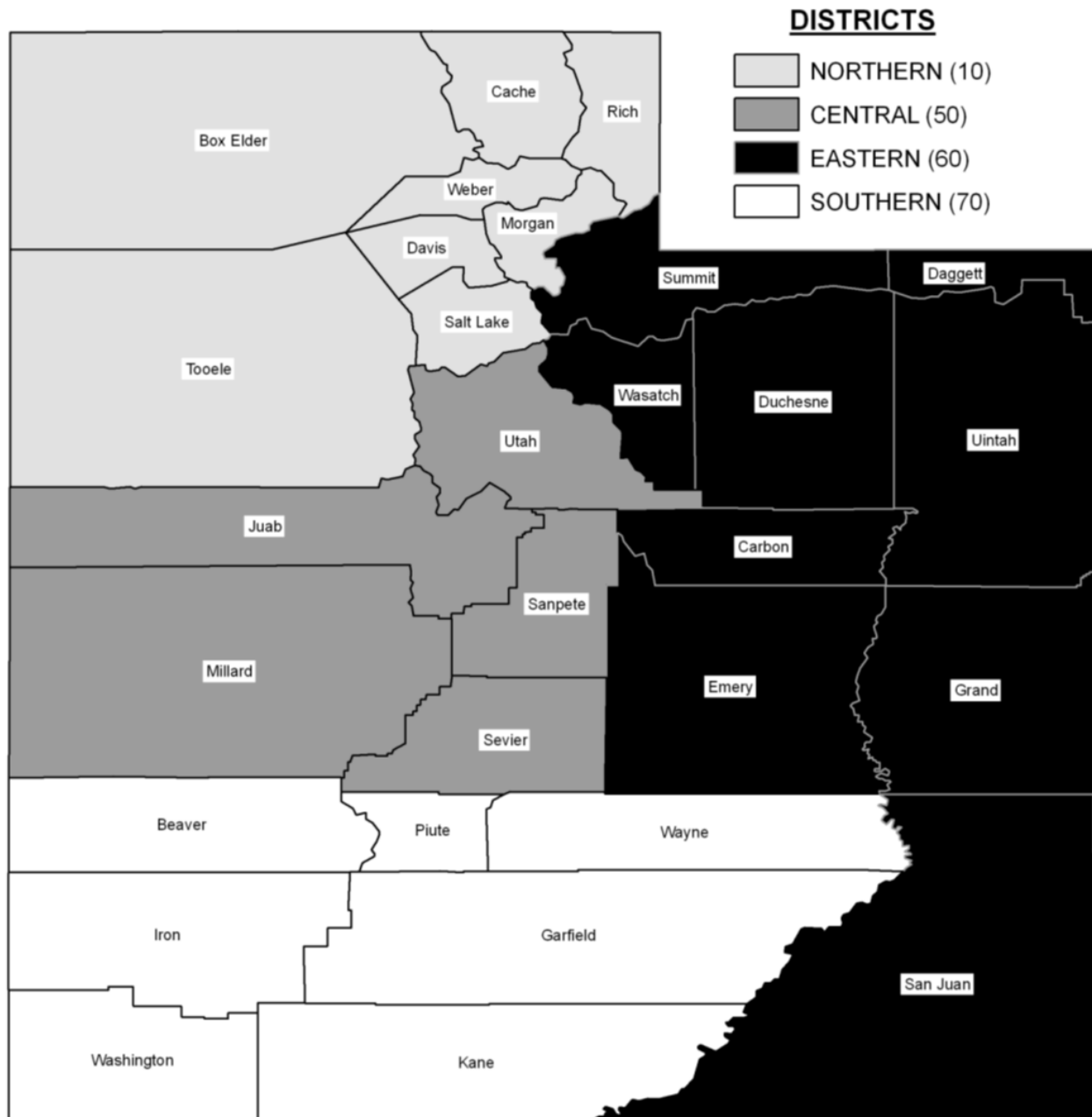
Table 2. Ranch Investment Summary

Description	Purchase Price	Livestock Share (%)	Revised Purchase Price	Useful Life (yrs)	Salvage Value	Annual Capital Recovery	Annual Insurance	Annual Taxes	Annual Repairs
Buildings, Improvements, & Equipment									
Portable Fencing	\$2,500.00	100%	\$2,500.00	15	\$250.00	\$150.00	\$9.16	\$ -	\$27.50
Portable Corrals/Chutes	\$6,000.00	100%	\$6,000.00	15	\$600.00	\$360.00	\$21.98	\$ -	\$66.00
Watering Facilities	\$2,000.00	100%	\$2,000.00	10	\$200.00	\$180.00	\$7.33	\$ -	\$22.00
Tools/Equipment	\$1,000.00	100%	\$1,000.00	10	\$100.00	\$90.00	\$3.66	\$ -	\$11.00
Sub Total	\$11,500.00	NA	\$11,500.00	NA	\$1,150.00	\$780.00	\$42.12	\$ -	\$126.50
Machinery & Vehicles									
Case Skip Loader (used)	\$20,000.00	10%	\$2,000.00	10	\$200.00	\$180.00	\$7.33	\$ -	\$77.00
3/4 Ton Pickup	\$40,000.00	10%	\$4,000.00	8	\$400.00	\$450.00	\$14.65	\$ -	\$154.00
Livestock Trailer (used)	\$10,000.00	100%	\$10,000.00	10	\$1,000.00	\$900.00	\$36.63	\$ -	\$385.00
Flatbed Trailer (used)	\$5,000.00	100%	\$5,000.00	10	\$500.00	\$450.00	\$18.32	\$ -	\$192.50
4-Wheeler (used)	\$5,000.00	10%	\$500.00	6	\$50.00	\$75.00	\$1.83	\$ -	\$19.25
Sub Total	\$80,000.00	NA	\$21,500.00	NA	\$2,150.00	\$2,055.00	\$78.75	\$ -	\$827.75
Purchased Livestock									
Bulls (1)	\$3,500.00	100%	\$3,500.00	5	\$1,750.00	\$350.00	\$ -	\$ -	\$ -
Sub Total	\$3,500.00	NA	\$3,500.00	NA	\$1,750.00	\$350.00	\$ -	\$ -	\$ -
Total	\$95,000.0	NA		NA	\$5,050.00	\$3,185.00	\$120.88	\$ -	\$954.25
Retained Livestock (interest only)									
Heifers (10)	\$24,000.00	100%	\$24,000.00	NA	\$24,000.00	\$1,200.00	\$ -	\$ -	\$ -
Total	\$24,000.00				\$ -	\$1,200.00	\$ -	\$ -	\$ -

Table 3. Total Ranch Income and Net Returns by Sales Price

Price Per Pound (Live Weight)	Total Ranch Income	Income Per Head Sold	Total Ranch Net Returns
\$2.00	\$20,000.00	\$2,000.00	\$(1,480.13)
\$2.20	\$21,520.00	\$2,152.00	\$39.87
\$2.40	\$23,040.00	\$2,304.00	\$1,559.87
\$2.60	\$24,560.00	\$2,456.00	\$3,079.87
\$2.80	\$26,080.00	\$2,608.00	\$4,599.87
\$3.00	\$27,600.00	\$2,760.00	\$6,119.87
\$3.20	\$29,120.00	\$2,912.00	\$7,639.87
\$3.40	\$30,640.00	\$3,064.00	\$9,159.87
\$3.60	\$32,160.00	\$3,216.00	\$10,679.87
\$3.80	\$33,680.00	\$3,368.00	\$12,199.87
\$4.00	\$35,200.00	\$3,520.00	\$13,719.87

UTAH COUNTIES AND DISTRICTS



**UNITED STATES DEPARTMENT OF AGRICULTURE
NATIONAL AGRICULTURAL STATISTICS SERVICE
MOUNTAIN REGION, UTAH FIELD OFFICE
350 S MAIN ST, SUITE 100
SALT LAKE CITY, UTAH 84101**

PRESORTED STANDARD
POSTAGE & FEES PAID
USDA
PERMIT NO. G-38

OFFICIAL BUSINESS

ADDRESS SERVICE REQUESTED

